

SNOWFED

For 37
years

Methven & Foothills Newspaper - owned by Mount Hutt College

Rāpare 20 Paengawhāwhā 2023 Putanga 12
Thursday 20th April 2023 Issue 12

Photos by Bridget Louise Photography



Mayor Neil and Judy Brown



Karen Manning, Her Excellency Jane Connolly, Laura Day



Over a vibrant, action packed few days, The Opuke Gathering was held in Methven last weekend, celebrating traditional Irish culture and music.

Hosted by the Irish Business Network of New Zealand and the Tara Trust, the guest of honour was Her Excellency Ms Jane Connolly – the Ambassador of Ireland to New Zealand.

Students from Mt Hutt College performed a haka of welcome for Ms Connolly.

As part of the weekend's events, there was the opportunity to learn more about Irish music, culture, learn the tin whistle

(this was so popular that organisers ran out of whistles!), play Gaelic Football, learn some Irish language and much more.

An auction for The Tara Trust which assists the Irish community with support for welfare, culture and the arts, raised over \$4,000. This occurred from a "Four Proud Provinces" auction where jerseys for Lenister, Connacht, Munster and Ulster were auctioned off. Francis Royston, Jack

Saxon, Patrick Nagle and Mark Lock came out the winners!

Thirty children attended the Culture Club events. All of the events were well attended with a Céilí and the Rennie Pearson show on Saturday evening.

The Gathering culminated at The Dubliner with traditional Irish music.

PRIME SPOT!

Want your business on the front page for 2023?

Contact Annie: letterbox@snowfed.co.nz
or phone 03 302 8437 ext 3



Boundary lines are indicative only



Boundary lines are indicative only



Boundary lines are indicative only

Methven 9 Morgan Street

Peaceful Methven oasis

Perfectly positioned on a tranquil Methven Street, you will find this immaculately presented, permanent material, low maintenance treasure. Manicured, established gardens present street appeal with bursts of vibrant colours, and invite you through the sturdy gates of this fully fenced 760sqm (more or less) property.

bayleys.co.nz/5520760

3 1 1 2

Price by Negotiation

View by appointment

Fee Ensor 021 705 014

fee.ensor@bayleys.co.nz

WHALAN AND PARTNERS LTD, BAYLEYS,
LICENSED UNDER THE REA ACT 2008

Methven Lot 159 Camrose Estates

Get a foot into Methven

Are you looking for a beautiful location to build your dream home or investment property? Look no further than Methven, a picturesque town surrounded by stunning scenery. This 1,030sqm (more or less) section is situated in the highly sought-after area of the prestigious Camrose Estate.

bayleys.co.nz/5520877

1,030sqm

Price by Negotiation

View by appointment

Fee Ensor 021 705 014

fee.ensor@bayleys.co.nz

WHALAN AND PARTNERS LTD, BAYLEYS,
LICENSED UNDER THE REA ACT 2008



Boundary lines are indicative only

Methven 21 Forest Drive

For lease large retail space Methven

On offer is a spacious commercial building in a prime location ready to lease! This 348sqm (more or less) property has been upgraded to prime space in the heart of the retail precinct of Methven and can be converted into two spaces if necessary. It comes with four parking spots in the landscaped courtyard fronting Forest Drive.

bayleys.co.nz/5520832

348sqm 1

Price by Negotiation

View by appointment

Fee Ensor 021 705 014

fee.ensor@bayleys.co.nz

WHALAN AND PARTNERS LTD, BAYLEYS,
LICENSED UNDER THE REA ACT 2008



With unwavering passion for connecting people with their ideal properties, expertise in the market and a proven track record, Fee Ensor can help you buy or sell your dream property in a smooth and hassle-free manner. Let her guide you through the process and find your perfect property today.

Fee Ensor | 021 705 014

fee.ensor@bayleys.co.nz

www.feeensor.co.nz

FREE ENSOR
AND TEAM

WHALAN AND PARTNERS LTD, BAYLEYS, LICENSED UNDER THE REA ACT 2008



ALTOGETHER BETTER

Residential / Commercial / Rural / Property Services

PUKA RATAKA Daily Diary

COMMUNITY

ON DEMAND

Mid Canterbury Connector from Methven / Mt Somers to Ashburton and return.
Book 2 days ahead 03 928 8164

MONDAY

Tai Chi Mount Hutt Memorial Hall 9.30am

TUESDAY and FRIDAY

Methven Public Library 2pm-4pm

Methven Museum 2pm-4pm

WEDNESDAY

Busy Bees, Mt Hutt Elim Church 9-11am

Methven Toy Library 11am-1.30pm

Methven Green Waste drop off,
Vaughans Rd, 12.30pm-2.30pm

SATURDAY

Methven Toy Library 9.30am-12noon

Methven Public Library 10-11am

AA Meeting Methven Primary School
Library, 6pm

SUNDAY

Methven Green Waste drop off,
Vaughans Rd, 12.30pm-2.30pm

APRIL

8-23 Methven Scarecrow Trail

20 Methven Historical Society AGM

23 Blessing of the Window, Holy Family

25 ANZAC Day at Lauriston Hall, 10am

ANZAC Day at Methven, 9.15am

MAY

2nd U3A Keith Hawke, Ashburton

*This space is available for events that are advertised
in Snowfed - to get in touch, see below.*

I know God will not give me anything
I can't handle. I just wish that He
didn't trust me so much.

Mother Teresa

Snowfed contact details:

Advertising:

Go to our website:
www.snowfed.co.nz/Advertising
Rates
for sizes and prices

News and Articles:

Phone: Annie 302 8437 ext 3
Email: letterbox@snowfed.co.nz

Accounts Enquiries:

Phone: Bethany 302 8437 ext 709
Email: accounts@snowfed.co.nz

Disclaimer: The opinions, beliefs and viewpoints
expressed by the various authors of Snowfed
do not necessarily reflect the opinions, beliefs
and viewpoints of Snowfed and Mount Hutt
College.

All articles, photos and artwork produced by
Snowfed remain property of Snowfed and may
not be used in any other publication without
consent from Annie Jacobs, Editor.

Methven ANZAC Day Commemoration

Tuesday 25th April, 2023

9.15am assemble at Methven Memorial Arch (McDonald Street)

9.30am laying of wreaths and poppies. Organisations are welcome to lay
wreaths, and members of the public are welcome to lay poppies at
the Arch.

Parade/walk to the Mt Hutt Memorial Hall raising and lowering of the flag
followed by speeches and singing the National Anthem.

Refreshments will be served after proceedings in Mount Hutt Memorial Hall

All welcome

(Speeches will be in the Mount Hutt Memorial Hall if wet)

ANZAC Day in Methven

E Ihowā Atua,

(Oh Lord, God)

O ngā iwi mātou rā,

(Of nations and of us
too)

Āta whakarongona;

(Listen to us)

Me aroha noa

(Cherish us)

Kia hua ko te pai;

(Let goodness)
flourish,

Kia tau tō atawhai;

(May your blessings
flow)

Manaakitia mai

(Defend)

Aotearoa

God of Nations, at thy feet,

In the bonds of love we meet,

Hear our voices, we entreat,

God defend our free land.

Guard Pacific's triple star

From the shafts of strife and
war,

Make her praises heard afar,

God defend New Zealand.



Lauriston Soldiers War Memorial Hall

ANZAC Day service at the local Lauriston
Hall, Tuesday 25th April, 10am.

Service is followed by a community
morning tea - please
bring a plate.



Children please wear
school uniform.

Jenni Gibson Celebrant

- Weddings
- Renewal of Vows
- Namings
- Funerals and Interments

P: 03 324 8332 M: 021 723 089
W: www.newzealandcelebrant.nz

Host a Pink Ribbon Breakfast

Broadcaster and Breast Cancer Foundation NZ (BCFNZ) Ambassador Lorna Riley is encouraging Canterbury locals to host a Pink Ribbon Breakfast next month to support Kiwis affected by breast cancer.

After going through breast cancer for a second time last year, Lorna, who hosts the daytime show on Coast FM, says Pink Ribbon Breakfast is a cause that is close to her heart, "Through my shock diagnosis, surgery, chemotherapy, radiotherapy and beyond, BCFNZ has been there alongside me with support, advice and wonderful resources. The charity doesn't receive any government funding, so hosting a Pink Ribbon Breakfast is a



chance to help BCFNZ help so many of the women we love. It's also a great time to remind women to check their breasts and when they last had a mammogram. Early detection is everything when it comes to this insidious disease, as I well know. So get to know your normal, book that mammogram if it's overdue, and get your friends and whānau to do the same."

Pink Ribbon Breakfast is BCFNZ's biggest annual fundraising campaign

and people can sign up at www.pinkribbonbreakfast.co.nz. Last year, 67,000 New Zealanders got together with their friends, whānau and workmates at events to raise vital funds for BCFNZ's work in education, research and patient support.

As the most common cancer for New Zealand women, around 385 women in the Canterbury region are diagnosed with breast cancer every year.

Ah-Leen Rayner, chief executive of BCFNZ, says every Pink Ribbon Breakfast will make a difference, "With one in nine Kiwi women diagnosed with breast cancer, we all have someone in our lives who has



been affected. By hosting a Pink Ribbon Breakfast, you'll be helping us to achieve our ambitious vision of zero deaths from breast cancer – so that we don't lose any more of our women to this disease."

For more information and to register to host a Pink Ribbon Breakfast, visit: www.pinkribbonbreakfast.co.nz

STOP LEAVES

snow, hail, birds and vermin
from blocking up your spouting

Gumleaf Gutter Guard has been proven on thousands of homes across Australia and New Zealand over the last 12 years.

Quality materials: BHP Colourbond steel mesh with unique patented louvre which will even keep out pine needles. Will not rust or sag with age or load.

Colour matched to your existing roof colour and a 10 year warranty for total peace of mind

Call Rohan Rudd for a no-obligation assessment and quote anytime, any day except Sunday.

GumLeaf

0800 486 532
or 03 982 8850
www.gumleaf.co.nz



- SHEEP, CATTLE, DEER & EQUINE FENCES
 - POST & RAIL FENCES
 - SHEEP & CATTLE YARDS
- FARM MAINTENANCE & LAND CLEARING
 - GENERAL EXCAVATIONS

For a quality job,
call Nate on
022 044 7173

METHVEN TYRE & HIRE



Passenger Tyres • Truck Tyres
Agricultural Tyres • Punctures and Repairs • Wheels • Tyre Vulcanising

Hireage of equipment for Firewood, Gardening, Transporting, Moving House, Entertainment and Functions!

FULL RANGE OF ASHBURTON U-HIRE EQUIPMENT AVAILABLE THROUGH METHVEN TYRE & HIRE

24 CALL OUT
HOUR SERVICE
AVAILABLE

03 302 8411
24 Methven
Chertsey Rd
METHVEN

NEUMANN TYRES



Gorge Bridge stands as WW 2 Memorial

The Rakaia Gorge Concrete Arch Bridge stands as a local Second World War Memorial, alongside: Glenroy Soldiers Monument, Mt Hutt Memorial Hall, Methven Peace Oaks, Methven Empire Oak, Methven First World War Memorial Arch and other monuments around the district.

In 1939, the new main road traffic bridge on SH1 over the Rakaia River at Rakaia had just been opened, and there was concern about its vulnerability to enemy attack as Japan moved south in the Pacific during World War 2. Fords could not be relied upon, so the Rakaia Gorge Bridges, on the only alternative route, were designated as of major strategic importance. In 1942 both bridges were camouflage-painted.

It was known that the wooden bridge would not carry a 24-ton Matilda tank nor, indeed, a medium size bulldozer. This was found out when trying to get one



across to make a tank trap on the south approach. It was estimated that the timber bridge might take a five-ton axle load.

Urgency was given by the New Zealand War Cabinet to design and construction of a reinforced concrete bridge to replace the wooden one. As a temporary expedient, big concrete culverts were laid in the flood channel, with a causeway connecting to Goat Island. No sooner was this done than they all disappeared in a flood. The crossing was restored, only to suffer the same fate. Construction started on the 205 foot single-span reinforced concrete arch bridge in 1943.

It was found that a mould used for the concrete roof arches for hangers at Ohakea Air Force base could, with some modification, be used for the bridge. So, it was shipped south. A contract, for £6,136 10s, was let in June 1943 with

continued on next page

Room for rent?

The end of May will see an influx of winter workers arriving in Methven ready for another season at New Zealand's Best Ski Resort!

We will have several employees seeking accommodation for the upcoming season.

If you have a **reasonably priced** property, sleepout or room available from May/June-October, we can advertise this for you to our team.

Email the details, along with photos and your price to:
iana.schiphorst@mthutt.co.nz



www.mthutt.co.nz

SPRING LYNNE MOTORCYCLES

Service and repairs of all makes and models of motorcycle, ATV and Side by Sides.

Sales of used farm motorcycles, ATVs and Side by Sides.

Ph 03 302 4939

1830 Methven Highway, RD6, Ashburton

Open Monday to Friday 8am -5pm



www.springlynnemotorcycles.co.nz

CARTER'S tyre service

- CAR TYRES
- TRUCK TYRES
- TRACTOR TYRES
- PUNCTURES
- WHEELS
- BATTERIES
- TYRE VULCANISING
- ON FARM SERVICING



CALLOUT

MID CANTERBURY
CHRIS GOTTERMEYER
022 317 5025
9 LINE ROAD, METHVEN





Methven A & P Association

2023 Winter Feed Competition 15th and 16th May



Competition Classes

1. Rape
2. Kale
3. Turnips
4. Swedes
5. Autumn saved pasture
6. Mixture of any winter feed
7. Greenfeed cereals (oats, ryecorn, triticale)
8. Fodder Beet

Conditions

Entries are limited to one entry per class and no more than three entries in total. Minimum area 2 hectares.

Entry Fees

Methven A&P Association Members \$40 / class
Non-Members \$50 / class

For enquiries, please contact convenor: Mark Lock 027 221 9887.

Entries close Friday 5th May 2023

NOTE: Invoices will be sent on receipt of application form.

ENTRY FORM

Name: Phone:

Address:

Email:

Class No.	Crop	Location of paddock/s (Please provide a detailed farm map showing paddock location/s)
Example Class 1	Leafmore	Run off block, P Smith, 647 South Road, Lowcliffe. OR Home Block 819 North Road, Wakanui

Email entries to: methvenshow@gmail.com

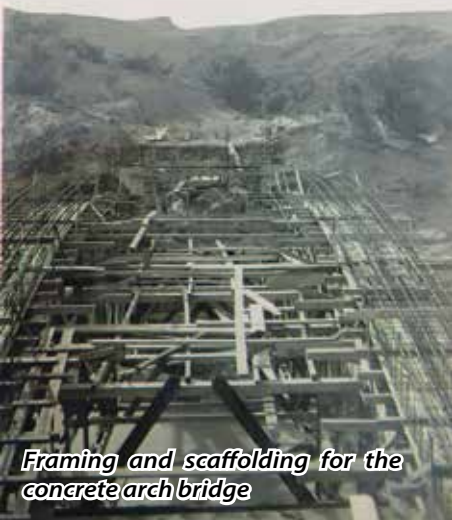
Interested in being a member of the Methven A&P Association? YES / NO

\$30/year entitles you to two members tickets to Methven A&P Show plus one ticket to 14 other A&P Shows



Gorge Bridge stands as WW 2 Memorial

continued from previous page



Framing and scaffolding for the concrete arch bridge



The completed bridge with some of the frameworks underneath

Photos and information support courtesy of Methven Historical Society

the Westland Construction Company of Greymouth, completion to be five months later in November.

A month later, Cabinet instructed that the width of the carriageway was to be increased from 12ft to 24ft, an exceptional standard for its day. Credit for this is given to John Shannon McHugh, the Hororata blacksmith, who was a duck-shooting crony of Bob Semple, the Minister of Public Works, and Paddy Webb, the Minister of Mines. McHugh pointed out to

them that a one-way bridge would be like going duck shooting with a single-choke shotgun. The plans were redrawn, and a new contract was let with Westland for £9,096. Thus was created the peculiarity of a better than two-way bridge hard by the narrow iron bridge carriageway. Work had to be deferred while the contractors were transferred to other defence jobs, and the contract completion date was put back from April 1945 to July 1946. The real cost of the bridge is

a mystery as the price contains many hidden items such as compensation for the breaks in the contracts and the consequent restoration work, and for delays caused by impossible nor'west gale conditions, paid for from the war expenses account.

Back in 1943 the Ashburton and Selwyn County Councils had agreed to find one quarter of the cost or £800 each, and the Main Highway Board was to pay the balance.



SUPPLEMENTARY FEED

SILAGE

Grass, Lucerne, Maize, Cereal Silage, Standing Crops - Baled - Chopped - Balage Supply

STRAW/HAY

Rye Grass, Barley, Wheat, Oat, Cocksfoot, Fescue, Prairie Grass, Brome, Linseed, Pea Straw, Hay

GRAIN

Barley, Wheat, Oats, Feed Grain

WINTER FEED

Fodder Beet, Swedes, Kale, Rape, Green Feed Oats

MANURE

Compost, Pig Manure, Organic Manure available for promoting Soil Health

"We trade all types of animal feed & manure products."



CONTRACTING SERVICES

Mowing, Tedding, Raking, Round Baling, Square Baling, Bale Wrapping, Forage, Harvesting, Loader Wagon, Weighing/Feed Analysis, Cartage, Muck Spreading, Effluent, Spreading, Ploughing, Cultivation, Seed Drilling and Precision Planting.

Andrew Jackson

Managing Director - 0274 393 387

Todd Holmes

General Manager - 027 279 8926

OPERATIONS

Harry Jackson

027 748 9599

Scott Haywood

027 557 0530

Tom Martin

027 848 0013

SALES

Bruce Lilley

027 55 33 085

Hamish Monk

027 522 3855

For a quality job done right, give us a call!



Take a Note "At Violinos"

You have possibly driven past "At Violinos" and thought, "That is just for people who play music," or wondered what all the musical looking stuff is doing in a paddock, but At Violinos is not just for people who play music.

It is a fantasyland farm of fun, hands-on exploration and enjoyment that unbelievably grew from an accommodation business with a twist.



The only musical farm in New Zealand has power house Ruth Hall behind its conception, who herself is an accomplished musician.

"However, you don't have to be musical to come to my place," Ruth invites.

At Violinos has a fun approach to music. All of the instruments are real instruments

and not toys, yet there is so much enjoyment to be had here and if you have never played a note of music in your life, you will be able to by the time you leave.

There are large games and experiences and for the more competitive, there's an adult sized game of Connect Four and a giant chessboard. For those after something more therapeutic there is an adult-sized merry-go-round that plays the soothing sounds of waves and the ocean as you move around. Master C Rapper (toilet) is bound to get a giggle or two. When one sits on the throne, it elicits a musical response and not the kind you might be used to!

Ruth enjoys working with groups of people. In less time than it takes to click a maraca, she has them doing simple rhythm work and playing together in a band before they can quaver.



Annie Jacobs

Ruth demonstrating a working guitar made from a cake tin

Most of the instruments have a story and provenance behind them. The organ was made as a combination of two organs from the 1900's, with hours put in behind the scene to correctly tune and assemble it together. The phonograph is the same as one that Robert Falcon Scott took to



Vote in the Western Ward

Voting open now!

→ VOTE

1

Once you receive your voting papers, read the instructions carefully and complete your voting document.

→ PACK

2

Pack them into the supplied orange envelope.

→ DROP

3

Post them before Saturday 6 May or drop them into one of our ballot boxes.

No Voting Papers?

You may be able to cast a special vote at the Council offices in Ashburton.

Voting closes at noon, Friday 12 May 2023

Find out more at voteashburton.nz





Antarctica. At Violinos also sells musical themed giftware. On site is a boutique chapel where Ruth is hostess to an annual fundraising concert. The space is also a multifunction room and can be booked for weddings and events.

Visitors are welcome to bring a picnic and sit in the expansive gardens for lunch.

Entry is by appointment and at only \$20 per person for up to five hours of entertainment, it is better value than going to the movies! Lunches and morning teas can be catered for groups of ten or more - these are a fundraiser for Age Concern, (ask Ruth about this at time of booking). She loves working with



groups of retired people too and they enjoy coming to this musical adventureland. This is also the perfect place to take your workplace team to have a bit of fun and enjoyment.

"Everyone leaves with a smile on their face," Ruth said.

To book your visit phone Ruth 027 602 8239 or go to:

www.atviolinos.co.nz

SEPTIC TANKS

BLOCKED DRAINS

FARM EFFLUENT

CCTV CAMERA

LIQUID WASTE DISPOSAL

Phone: 3085293 - 0274333563

Whose is the biggest pumpkin?



Above left: *Jeremy Duckmanton, Sam Letham, Simon Wilson, Carol Wilson, Phil Logan, David Logan, Barrie Begg, Mark Shears, Charlie Tomlin, Chris Pannett, Tom McKendry, Grant Walker, Alan Butterick*

At the weekend, Lauriston Fire Brigade held their giant pumpkin weigh in and "The Great Lauriston Bake Off." Both are hotly contested competitions for the Brigade's JR trophy awarded to the winner of fun social events.

Pumpkin Results: 1st **Mark Shears** 77kg, 2nd **Barrie Begg** 49kg, 3rd **Carol Wilson** 46kg.

The Top Baker was found to be **Charlie Tomlin** with his cinnamon oysters, **Jeremy Duckmanton** coming second with his caramel slice and **Carol Wilson** in third place with her custard square.

Winners get to organise the next competition.



Computing Solutions

www.comsol.net.nz 03 308 3400

Your Place or Ours

Competitive Rates | Same day service* | Experienced qualified technicians

- | | |
|-------------------|------------------|
| ✓ Laptop repairs | ✓ Internet |
| ✓ Desktop repairs | ✓ Email |
| ✓ Printer repairs | ✓ Data recovery |
| ✓ Remote support | ✓ Backup systems |

* Same day service where possible



Computers fixed fast the first time





Successful "Meet the Candidates" Meeting

Above left: Rob Mackle, Hayden Tasker, Carol Johns and Lynda Topp

Organised by Ron Smith and Methven Lions, last Tuesday a "Meet the Candidates" meeting was held at the Mount Hutt Memorial Hall, prior to the upcoming Western Ward By-Election.

The vacancy has occurred due to the sad passing of Councillor Rodger Letham last December, leaving big, committed shoes to fill. The candidates, Hayden Tasker, Rob Mackle, Lynda Topp and Carol Johns were invited to speak on what skillset they would be able to bring and offer if successful in the election, to the Western Ward Council role. A number of the candidates had previous experience in roles such as this and all would bring a variety of experience to the table.

Carol Johns encouraged people to watch the the live Council meetings and to have

your say on matters that affect you. She said she would take your voice to Council and bring Council's voice to you.

Hayden Tasker has a family background of Council involvement and well aware of local issues having lived in Mid Canterbury all of his life. Hayden believes in doing homework on behalf of the Ward and has a deep respect for meeting etiquette.

Lynda Topp does not want to see any increases in rates and feels the Council should pay for the new water treatment plant.

Rob Mackle acknowledged the passing of Rodger Letham – a born and bred farmer. Rob feels there is untapped potential for tourism, and having given lifesaving treatment at a local accident scene, has concern around roading and intersections. He wants to see resources for protecting youth before drugs and alcohol get a hold.

The public were given the opportunity to ask questions.

Voting is now open and closes at noon on Friday 12th May. For more information go to: voteashburton.nz

Draft Transportation and Parking Bylaw

Council is reviewing this bylaw and looking for feedback from the community on proposed changes, which help ensure the controls on roads and footpaths meet the needs of residents, road users and businesses.

The bylaw covers a range of issues related to our roads, like parking restrictions, one-way roads, and where heavy vehicles including stock trucks can drive and park. It was last reviewed in 2015 and a lot has changed since.



*Have your
Say!*



We want to hear from YOU!

Visit ashburton.govt.nz/haveyoursay or scan the QR code to find out more and share your feedback by 5pm, Sunday 14 May.

Ashburton
DISTRICT COUNCIL

Three Wise Men a great success!



Photo by Clayton Yaxley

Methven Trotting Club's "Three Wise Men" day, on Sunday was a spectacular success!

The wise men were members of the 3,000 winning drivers club comprising of Tony Herlihy, Maurice McKendry and Ricky May. The Doug McCormick Memorial Trot saw Methven maestro Ricky May driving Unico Vancanza win from Abcardi Hazel and Take After Me.

Caritas Challenge Day at OLS

Our Lady of the Snows (OLS) School took up the challenge to Move It - Me Neke, Live it - Me Whakaora, Sweat it - Me Whakapau Wera Wera and Stop it - Me Kati, by taking part in the Caritas Challenge to build solidarity with those living with poverty or injustice. The four themes gave us the opportunity through hands-on, fun and informative activities to experience the challenges that many people face around the world.

When ākonga (students) got to school, they learnt they would not be able to access school buildings (except for the toilets) for the day, or lunchboxes and drinks from home. There were different stations around school where they would be able to complete challenges to earn water, food and materials to build a shelter.

The Move It challenge focused on understanding how lack of access contributes to poverty. It highlighted the plight of people who have to travel long distances to access basic needs like water, food, safety, health and education. Our Year 4-6 students experienced what travelling long distances to access basic

continued on next page



A HIGH PERFORMING TRACTOR FOR HIGH DEMAND MACHINERY

6G Trima Loader Combo

- Four models spanning 145-205 HP
- New features including RC transmission
- All new armrest controls
- Deutz-Ag 6 cylinder engine with no ad-blue requirements

FINANCE FROM 0%* INTEREST

*Terms, conditions and normal lending criteria applies. 30% deposit, 0% interest rate, monthly payments over 24 months. GST paid month 3. While stocks last and for a limited time only.

6G SERIES

f t i deutz nz



Simon Jackson
Dealer Principal
027 512 7205



Tom Wells
Sales
027 706 4147

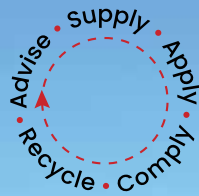


Nigel Douglas
Sales
027 263 9185

POWER FARMING

OUR SERVICES:

- Crop & Pasture Spraying
- Agri-Chemical Supplier
- Full, Independent Agronomy Advice
- Ravensdown Flowfert Products
- AgRecovery Collection Site
- Bateman Sprayer: Sales, Service & Parts



Professionals In Our Fields Since 1985
Book Online molloyag.co.nz

CONTACT

Agronomy - Gregor Robertson - 0274 362 438

Liquid N - David Mangin - 0274 802 216

Bateman Dispatch - Gary McCann - 0274 362 442

Managing Director - David Molloy - 0274 362 441

General Manager - Henry Ross - 0275 652 661

Truck Dispatch

Colin Woolsey - 0274 362 448

Aaron McQueen - 0274 532 413

Heat Pump Maintenance

Servicing the Methven area every Thursday.



CALL TODAY
308 9008

service@electraserve.co.nz



ElectraServe
✓ MASTER ELECTRICIANS



166 Moore St, Ashburton | www.electraserve.co.nz



continued from previous page

necessities felt like by working together to decipher a map that lead them to Methven Preschool to collect water for us all for the day. They faced many challenges along the way and were exhausted and desperate for a drink of the water they had carried back to OLS. Later on, our Year 1-3 students also had to journey 'over hills, across bridges and past bandits' to collect water for lunch time.

The Live It Challenge provided an opportunity to personally experience living without a home and the comforts we take for granted. One billion people live in slums – that's one seventh of the world's population! To experience and show solidarity with the poor and homeless, ākonga built temporary shelters from cardboard and sticks to take shelter in it for the day. It was also challenging to listen to everyone's ideas and include everyone in their overcrowded homes.

The Sweat It Challenge invited us to stand in solidarity with the millions of workers, including children, who are forced into sweatshops around the world. Poverty forces many to sell their labour for very little pay in appalling conditions. So while in their shelters, ākonga had to work in shifts making items to trade for cushions, blankets and other things to make them a little more comfortable for the day.

Preferential protection of the poor and vulnerable is a basic principle of Catholic social teaching: the needs of the poorest and most vulnerable must be put first. This Challenge reminded us that we are all one human family and are responsible for one another wherever in the world we may be. The Stop It Challenge again represented an act of solidarity with those who live in poverty. So we gave up all our yummy snacks by only eating what we earned through each challenge, we also gave up being in our warm, dry classrooms and having to stick it out in our temporary shelters. It allowed us to experience hardship like the world's poor endure daily. To complete this challenge ākonga took part in baking some hot cross buns and picking fruits and veggies from our school garden to share it with our community.

It was a very successful day and our students left feeling proud that they stood with those who endure these circumstances daily.

Check out Facebook Page to see more photos.



EXPLORING OUTSIDE

Mary Ralston

Beautiful autumn days can really help to make us feel alive and happy. Life seems even better when we are outside in the fresh air and amongst living things.

Many people know intuitively that they feel better for being outside and it has been found in many studies that people who spend more time in "nature" (parks, gardens, mountains, lakes and beaches), tend to have better physical and mental health than those who spend most of their time indoors.

The effect is probably a combination of a sense of relaxation from being away from job and household responsibilities, the physical pleasure we get from hormones that are released when we exercise and the wonder we may feel for the beauty of the natural world or our patch of veges.

A study looked at whether the positive effects could be also attained when people are "prescribed" outdoor time. Or is it only beneficial when you decide to go outdoors of your own accord?

In Australia, "nature prescriptions" are becoming popular for those with cardiovascular conditions, psychological distress or those who are inactive, sedentary, lonely or burnt out. Given alongside traditional medicines and therapies, it has been found that nature prescriptions provide significant benefits for physical and mental health.


A review of 28 studies of different nature prescriptions for people with a range of conditions from cardiovascular disease, substance abuse to dementia, found that the positive effects are there even when nature is prescribed – improvements were



found in blood pressure, mental health, obesity, and a range of other indicators.

Most of us who live in this area have ready access to the outdoors – we're very lucky to live in this part of the world. On lovely autumn days there's nothing better than a spot of gardening, a walk around Methven, along the RDR or further afield in the hills. Just sitting in the sun is pretty good too!

Make the time to get out whenever you can...



Love your smile

We are open late nights and welcome new patients

Braces + Invisalign	Dentures (full & Partial)
Sedation + 3D imaging	Root canals
Wisdom teeth extractions	One visit crowns
Implants + bridges	Mouthguards
Whitening	



80 Park Street Ashburton
Call 03 308 7472

Community Services Card
Free Adolescent care
WINZ Quotes

Book online: www.dentistryonparkside.co.nz

Methven Panel & Paint Ltd.

Specialist paintwork



03 303 3148

47 Line Road, Methven

Email: methvenp@xtra.co.nz

After hours: Matt 027 711 7117

Striker brace breaks Methven hearts



The blistering shot by Methven FC Striker Thabs Khabu was saved by Hornby AFC goalie. In the background Greg Howard shows his anguish.

Photo by Clayton Yaxley

Methven's first away fixture of the season wasn't one to remember.

The Mountaineers started the game sluggishly, failing to string simple passes together. The long grass on the pitch set the scene for a slow encounter but the away side couldn't adapt to the conditions.

In all fairness neither side looked like breaking the deadlock, with little to no chances being created. It certainly wasn't a match for the purist of spectator. However, at this level, you must always remain focused at all times, or expect to pay the price. Such a scenario occurred when defender, Jan Piotrowski, seemingly didn't hear the call from the Methven Keeper to leave the ball for his collection. Jan Piotrowski got his head to the ball but inadvertently teed up the striker to notch the ball into an unguarded net, 1-0. In no time, lightning struck again as Jan Piotrowski's nightmare afternoon continued. The defender sliced his clearance into the path of the same striker, who welcomed another gift and slotted home from 6 yards out, 2-0.

Methven could have gone in level at half time, had they taken their chances. Both Thabs Khabu and Jan Luccini had glorious opportunities to reduce the deficit, but lady luck did not favour them.

The second half saw the away side control the match but Halswell were in no mood to exchange any goals.

The home team's deep defensive formation left little room for Methven to penetrate in behind. Despite patiently probing at times, the lack of creative spark and striker movement, proved costly on this occasion.

The match ended with a 2-0 win to the Goal Exchange and plenty of food for thought for the Mountaineers. A reminder of how unforgiving this league is and how any mistakes will be punished. But they won't want to rest on their laurels for too long as next weekend sees Methven host Mid Canterbury Utd FC Blue, with a potential tasty derby grudge match in store.

Halswell Goal Exchange 2 V Methven FC 0

Need holes augered?



**Check
out our new
website!**

**KTS
CONTRACTING**

Open weekdays 8am-5pm
www.ktscontracting.co.nz
Phone 027 458 2000

ROBBIE'S MIND MATRIX

- Managing mending minds

Robbie Gooserooter Shefford

I've had a huge couple of months with events, and its been awesome talking to people who have read my articles and watched my videos.

It's now time to sit back and regroup and catch up on myself, so I've been tidying the garage as after each event every just got thrown in there. I was listening to Uncle Kenny Rogers, "Coward of the County," while tidying up. One of the lines talks about Tommy seeing his Becky crying, and naturally I've been thinking and collecting all my random thoughts together.

Tears are often associated with sadness, grief, and pain. They are a natural response to emotional turmoil, and they can be cathartic and healing. However, not all tears are created equal. Some tears are more painful than others, not because of the intensity of the emotion behind them, but because of where they come from.

The most painful tears are not the ones that fall from the eyes and cover the face. Those tears are visible and they can be wiped away with a tissue, and the pain they represent can be expressed and shared with others.

The most painful tears are the ones that fall from the heart and cover the soul. These tears are invisible and often go unnoticed by others. When we experience emotional pain that is so deep it cuts to the core of our being and tears may fall from our hearts. These tears are born out of a profound sense of loss, betrayal, or trauma that shakes our very foundations. They may be caused by the death of a loved one, the end of a relationship, or the realisation that we have been living a lie.

These tears are different from the tears that flow from our eyes because they are not just a response to a specific event. They are an expression of a deeper, more complex emotion that is

hard to put into words. They are the tears of the wounded soul, the tears of a person who feels alone and isolated in their pain. The pain of these tears is not just physical but spiritual. It is a pain that cannot be cured with a pill or a kind word. It is a pain that requires deep introspection, self-reflection, and often, professional help to overcome. It is a pain that can leave us feeling broken, lost, and disconnected from ourselves and others.

The most painful tears are also the most transformative. They can be a catalyst for personal growth, self-awareness, and healing. They force us to confront our deepest fears and vulnerabilities, to look within ourselves and find the strength to rebuild our lives. They help us discover a new sense of purpose and meaning, and they teach us to be more compassionate, empathetic, and understanding towards others.

Do remember tears are not just a physical response to emotional pain. They are a complex and multifaceted expression of our deepest emotions and our most profound experiences. The most painful tears are the ones that fall from the heart and cover the soul because they represent a pain that is hard to heal, but they can also be a source of strength, growth, and transformation. If you ever find yourself shedding these tears, know that you are not alone, and that there is hope for healing and a brighter tomorrow.



I.T. Question? Computer Issue?
THINK DCS – A.S.A.P



DYNAMIC COMPUTER SERVICES

- Local people and local support
- IT Services & Support
- Products and services without the confusing technobabble

CALL NOW: 03 307 8501

Member of BNI Ashburton

131 Alford Forest Road, Ashburton
E: info@dynamiccomputers.co.nz
Office Hours: 9:00am - 5:30pm



NATIONAL CANDIDATE

A Waste of \$94 million

James Meager



There were two significant announcements made in the last fortnight.

First, the Reserve Bank announced a 50 basis point hike in the Official Cash Rate to 5.25%. Already we have seen this have an impact on mortgage rates. ANZ announced floating home loan rates will increase by 0.40% to 8.39%, and two-year fixed rates are up to 6.59%. Across the board, these kinds of interest rate hikes would see homeowners with an average-priced house on an 80% mortgage facing \$530 more in mortgage repayments a fortnight.

Next, the Government announced a rebrand to its Three Waters reforms. But the only thing which has changed is that the number of regional mega-entities now in control of local water assets will be ten rather than four. Local water assets are still being confiscated from local councils, who lose control of assets that ratepayers have paid for over decades. Locals still have no say.

National has released our plan for Local Water Done Well, which restores council

ownership and control, without co-governance of water services.

The two are connected. It is excessive and wasteful government spending which is driving up inflation, causing the Reserve Bank to hike interest rates. Excessive and wasteful spending like the Three Waters Reforms. \$94 million has already been spent to date on consultants, branding, and establishing the four new entities. To avoid taking on even more debt, the Government is now cancelling \$1 billion in "Better Off" funding it had previously promised to local councils for community wellbeing initiatives.

We must get spending and waste under control. National will restore discipline to government spending and tackle the cost-of-living crisis through responsible economic management. Think what we could have achieved locally with that \$94 million. How many potholes, GPs, cochlear implants and bridges could that fund? Government has a choice when it spends. You have a choice when you vote.

Exercise that choice wisely on 14th October.

James Meager is the National Party candidate for Rangitata and can be contacted on 027 427 5197 or at:

james.meager@national.org.nz

Want your feelings known - have your say!

Ashburton District Council (ADC) are reviewing the Transportation and Parking Bylaw and want to hear feedback from the community on proposed changes.

This bylaw helps ensure the controls on roads and footpaths meet the needs of residents, road users and businesses.

The bylaw covers a range of issues related to our roads, like parking restrictions, one-way roads, and where heavy vehicles including stock trucks can drive and park. It was last reviewed in 2015 and a lot has changed since.

Proposed changes make the bylaw easier to read and understand, remove restrictions on speed limits as these are no longer set through the bylaw, and some updates to heavy traffic routes.

The proposed updates reflect changes in the roading network, like new roads or developments, and make it easier for Council to make simple changes without reviewing the whole bylaw again.

But first, what do you think? Consultation is now open and submissions will close at 5pm on Sunday 14 May, with hearings and deliberations set down for 31 May.

For more information go to: **www.ashburtondc.govt.nz**

Be WARM this winter



Get your firewood now!

call Rini 027 451 7300



Philip Wareing Ltd

Line Road, Methven
Phone 302 8616
Fax 302 9657
philipwareingltd@xtra.co.nz



- Lime & Super Spreading
- Precision Nitrogen Sowing
- Hay & Straw Cartage
- Bulk Grain Storage
- Agricultural Spraying

- Log Cartage
- Stock Cartage
- Container Cartage
- Firewood Supplies
- Shingle supplies

- Daily Freight
- Swinglifting
- Cool Storage
- Silo Storage
- Grain Cartage

Philip Wareing 027 433 4897
Simon Wareing 027 228 9448
Murray Lumsden 027 433 4538

Gary Sheridan 027 672 3995
Grant Kenny 027 414 2886
Ian McLean 027 433 4545

Mark Wareing 027 433 4539
Matthew Oates 027 433 4541
Dan Kennedy 027 432 0898



Methven Autoservices
Limited

we love cars!



Call us for all repairs, tyres, WoF's, services and Air conditioning

Open Monday to Friday 8am - 5pm
phone 03 302 9077
or email: methvenauto@xtra.co.nz



13 - 19 April

Dayna Jamieson 26
Jasmine Chalke 14
Angus Robertson 11
Abbey Marr 12
Rob Mawle 43
Tom Mawle 43
Zoe Robertson 13
Ivan Heneghan 13
Sam Palmer 12
Grant Maw
Charlie Quinlan 12
Zoe Robertson 13
George Wareing 19
Adaline Bailey 3
Chris "Red" Staples 50

CONGRATULATIONS CHARLIE QUINLAN

Pop into Methven 4 Square
Supermarket for your surprise!

CLASSIFIEDS

CHIM Chim Chimney Sweeps-We'll sweep your logburner's flue, check firebricks, baffles, airtubes & controls. We're experts on coal-ranges, and can sweep any sized open fire. We quote & undertake repairs, flue extensions & install bird netting. 0800 224 464 www.chimchim.nz

FIREWOOD & Treework. Tree removal, call RK Firewood. Top money paid for big large trees. Call Rini 027 451 7300

ARE you sick of the slow engine response from your diesel ute? Consider fitting an S-DRIVE. Big performance gains for low cost. See Andrew at Methven Motors or phone 03 302 8201.

CHIMNEY Sweep for a clean professional service call Dan McKerrow Chimney Sweep & Repairs 021 118 7580.

GRAZING wanted. Long term grazing wanted for ewes, anywhere between 4-20ha close to Methven. If you have anything suitable please call Michael Dekker 027 737 0902.

ROCKET Fuel (250ml) and natural insect repellent on special until stock lasts. Methven Acupuncture Clinic. 03 302 8888 / 021 434 603

CHIMNEY Sweep available also firebox and flue repairs. 027 404 4226

BATTERY Problems? Come talk to your friendly Auto Electricians at Methven Motors for a FREE Battery test. Tel 302 8201 ext 2

METHVEN BRIDGE CLUB



North/ South:

Jennifer Hooke Mary Stone 69.44%

Willie Ensor Bob Todhunter 30.56%

East/West:

John Barwell Colin Clemens 69.44%

Janet Cuttle Esther Wallace 30.56%

GOLF CLUB

Mens Results 15th April

Green Jacket Winner: **Rod Carson.**

Senior: **Rod Carson** 82-15-67. Junior: **Barry Begg** 90-21-69.

Other good scores: 72 **Gary Foy, Eric Grimwade.** 73 **Mark Gazzard, Max Ferris, Piers Rolton, Richard Maw.** 74 **Dale Fisher, Mike Gray, Simon Wareing.** 75 **Matt Harvey.** 76 **Alan lock.** 77 **Keith Middleton, Hamish Woolsey.**

Shortest walk: **Gary Foy.** Longest walk: **Ross Breach.**

Nearest the Pins: Brown Pub No4: **Grant Hargreaves.** Hunters Wine No6: **Greg Overall.** Ski Time No13: **Richard Maw.** Green Parrot No17: **Barry Begg.**

Next week: 2nd Round of the Duff Trophy.

THE ALPINE GRIND

Weekly Community Heroes

Grandma (Alison Connell)

Mel Swift and family

Winner
Mel Swift and family

Pop into The Alpine Grind to receive
your free coffee

If you know a local hero, head in
to The Alpine Grind to nominate
them.

Great Space Storage

**Clean, Dry Containers
& Sheds from
\$120 per Month**

9/11 Line Road, Methven
Ph 0274 766 835 anytime

Methven Toy Librarian

Part-time



Methven Toy Library is looking for a toy librarian for three hours/ week (more hours from time to time). Days and hours can be discussed with the successful candidate.

You will:

- open the library
- provide a friendly and welcoming environment and hire toys to members
- take fees
- manage our toy and membership database
- keep toys and the library in good order and report to the Management Committee at meetings

This position is ideal for students (after school job), or Mums who need extra coin or a retired member of the community. You don't need to be a member of the Toy Library however the successful candidate will get a free membership and free toy hire.

If it sounds like you please email: toylibrarymethven@gmail.com to apply.

Methven and Surrounds

BAYLEYS

NEW LISTING



Methven Lots 1 to 11 Camrose Avenue

Build your legacy

Discover the exclusive enclave of eleven never-before-seen sections in the highly sought-after Camrose subdivision. Located on the edge of Methven Township, these smaller sections range from 430sqm (more or less) to 735sqm (more or less) and offer the perfect opportunity to build your dream home in a prime location.

bayleys.co.nz/5520961

735sqm

Price by Negotiation

View by appointment

Fee Ensor 021 705 014

fee.ensor@bayleys.co.nz

Rosa Dekker 0274 655 387

rosa.dekker@bayleys.co.nz

**WHALAN AND PARTNERS LTD, BAYLEYS,
LICENSED UNDER THE REA ACT 2008**

OPEN HOME



Methven 33 Colcord Place

Where living is easy

Built in 2012, 33 Colcord Place is designed for modern living and is ready for you to move in and enjoy or add some further touches. You will enjoy the generous size living and kitchen area that flows out onto the sun-filled deck area. There are four generous bedrooms, with the master featuring a walk in robe and ensuite.

bayleys.co.nz/5520282

4 1 2

Asking Price \$659,000

View Sat 11.30am-12pm

or by appointment

Rosa Dekker 0274 655 387

rosa.dekker@bayleys.co.nz

Maree Firth 027 542 1364

maree.firth@bayleys.co.nz

**WHALAN AND PARTNERS LTD, BAYLEYS,
LICENSED UNDER THE REA ACT 2008**



Boundary lines are indicative only



Photo not taken from site



Photo not taken from site

Methven Lot 90 Memorial Crescent

Priced to sell

This well sited rear 775sqm (more or less) section, located in a high-quality subdivision within Methven, offers a wonderful platform to design and build the home of your dreams. With titles due mid year, it is the perfect time to start the planning process and turn your dreams into reality. Surrounded by breath taking scenery and mountain views.

bayleys.co.nz/5519611

775sqm

Asking Price \$199,500

View by appointment

Rosa Dekker 0274 655 387

rosa.dekker@bayleys.co.nz

**WHALAN AND PARTNERS LTD, BAYLEYS,
LICENSED UNDER THE REA ACT 2008**

Windwhistle Lot 38/623 Coleridge Road

Price reduced, act now

On offer is Lot 38 Tussock Lane, a quiet, peaceful and private part of Terrace Downs Resort, situated overlooking the fifth fairway and has the fourth green on your doorstep. This 546sqm (more or less) section in the heart of an alpine paradise has mountain views and the bonus of mature trees surrounding for shelter.

bayleys.co.nz/5518813

546sqm

Asking Price \$195,500

View by appointment

Rosa Dekker 0274 655 387

rosa.dekker@bayleys.co.nz

**WHALAN AND PARTNERS LTD, BAYLEYS,
LICENSED UNDER THE REA ACT 2008**



New Listing

Stage 14 Camrose Est Lot 1 - 11, Methven

- 430m2 through to 735m2 (more or less)
- Short stroll to Opuke Hot Pools and township
- Title is expected 2024
- Development contributions have not been paid by the developer as per the ADC
- For more information on these sought after smaller sections please call us

For Sale
Price from
\$195,000 - \$215,000

View
by appointment

Ray White Methven
03 303 3032

rwashburton.co.nz/MVN30062

Real Estate Mid Canterbury Property Ltd Licensed (REAA 2008)



6 Westward Way, Methven

- Top Of The Line Lifestyle Section
- Looking right to No. 6 Hole on the Methven Golf Course
- 4003m2
- Power, water, fibre to boundary
- Waste water system required
- Only a few minutes drive to Methven's town centre with many cafes and restaurants

Deadline Sale
closing 2pm
Thu 20 Apr 2023
(unless sold prior)

View
by appointment

Margaret Feiss
021 751 009

rwashburton.co.nz/MVN30060

Real Estate Mid Canterbury Property Ltd Licensed (REAA 2008)



1636 Methven Highway, Methven

4 3 5

- Sitting perfectly on 25 ha is this 509m2 architecturally designed home
- A dream for entertaining, formal dining, lounge and comfortable family living
- 4 bedrooms, art room & study
- 3 bathrooms
- Five car garaging
- 3 large paddocks

For Sale
Enquiries Over
\$2,950,000
plus GST (if any)

View
by appointment

Margaret Feiss
021 751 009

rwashburton.co.nz/MVN30036

Real Estate Mid Canterbury Property Ltd Licensed (REAA 2008)



56 Memorial Crescent, Methven

- Your chance to buy a large 1470m2 (more or less) section on which to build your dream family home
- So close to Flow Pool and Studio, Opuke Hot Pools and Spa, Mt Hutt ski field, local shops, eateries and schools

For Sale
\$275,000
(PRICE REDUCTION)

View
by appointment

Shirley Fitzgerald
027 220 1528

rwashburton.co.nz/MVN30042

Real Estate Mid Canterbury Property Ltd Licensed (REAA 2008)



Business Owner:
Kim Miller
027 236 8627



Margaret Feiss
Licensee Salesperson
021 751 009



Shirley Fitzgerald
Licensee Salesperson
0272 201 528



Tracey Frost
Licensee Salesperson
021 279 1972



Trevor The Bald One
Licensee Salesperson
027 225 5669

36 McMillan Street, Methven 03 303 3032

rwashburton.co.nz