

SNOWFED

SINCE
1986

METHVEN'S COMMUNITY NEWSPAPER - Operated by Mount Hutt College

Thursday 25 July 2019 ISSUE 27



Mt Somers and Mt Winterslow at sunrise



Memorial Arch, McDonald Street



Main Street

Our

Beautiful Town



Forest Drive



Gorgeous growing things!

Methven
NEW ZEALAND

It's all about community...

Snowfed is proudly printed locally by Heartland Design & Print.

285 Havelock Street, Ashburton | 03 308 9160 | heartlandprint.co.nz



HEARTLAND
design & print

Phone: Duncan Ensor + 64 21 855 014
Email: info@nzfencingsolutions.co.nz



Address: Black Hill Station,
Methven, New Zealand



OUR AIM IS TO SAVE YOU MONEY

Suppliers of quality, cost effective products. A huge range of New Zealand made and imported materials.

Canterbury owned and operated. Visit our website for a full product range and pricing.

www.nzfencingsolutions.co.nz



Methven and Surrounds

BAYLEYS



Methven 4 Mays Lane

Large family home with generous section

Do you need plenty of space for family or guests? Perhaps you're already a local but looking to upsize? Or are you searching for a holiday home that promises a spectacular alpine lifestyle year-round? Properties such as this are a rare find.

bayleys.co.nz/5510320

4 1 2 2

Deadline Sale (unless sold prior)
2pm, Mon 12 Aug 2019

View 11am-12pm Sun 28 Jul

Fee Ensor 021 705 014

fee.ensor@bayleys.co.nz

**WHALAN AND PARTNERS LTD, BAYLEYS,
LICENSED UNDER THE REA ACT 2008**



Staveley 12 Burgess Road

Vendors instructions - must sell!

Don't miss this opportunity - this stunning property is reduced to a price that shouldn't be passed up. This 7.2346ha lifestyle property features a stunning, double storey, American Dutch style barn home built approximately 25 years ago, now beautifully renovated.

bayleys.co.nz/559363

6 1 5 2

For Sale offers invited over
\$999,000

View by appointment

Fee Ensor 021 705 014

fee.ensor@bayleys.co.nz

**WHALAN AND PARTNERS LTD, BAYLEYS,
LICENSED UNDER THE REA ACT 2008**

DIARY WEEKLY

MONDAY

Housie at Methven House 1.30pm.
All members of the community welcome

Tai Chi - Mount Hutt Memorial Hall, 10.30am

TUESDAY

Methven Public Library 2pm-4pm

Methven Museum 2pm-4pm

WEDNESDAY

Busy Bees 9am-11am at Elim Church

Toy Library 9.30am-12pm at Roads Board Building, 59 Main St

FRIDAY

Methven Public Library 2pm-4pm

Methven Museum 2pm-4pm

SECOND AND FOURTH FRIDAY EACH MONTH:

Plunket Coffee and Chat 10am-12pm
Plunket Rooms, Main Street

SATURDAY

AA Meetings 6pm Methven Primary School

Toy Library 9.30am-12pm at Roads Board Building, 59 Main St

Methven Public Library 10am-12pm

DAILY

Mt Hutt Memorial Hall Art Gallery
New exhibition by Carmen Lye until 2 Aug

JULY

27-28 July Fundraising Carwash at Mobil in Methven

AUGUST

3-4 August Methven Craft Fair

3-4 August Fundraising Carwash at Mobil in Rakaia

4-10 August Cook Islands Language Week

9 August International Day Of Indigenous People

9 August Mount Hutt in Concert

12 August World Youth Day

15 August Farewell for John Schreurs

30 August Cancer Society Daffodil Day

Snowfed contact details:

Advertising & Articles:

Ph. 302 8437 ext 3

E: letterbox@snowfed.co.nz

Disclaimer: The opinions, beliefs and viewpoints expressed by the various authors of Snowfed do not necessarily reflect the opinions, beliefs and viewpoints of Snowfed and Mount Hutt College.

All articles, photos and artwork produced by Snowfed remain property of Snowfed and may not be used in any other publication without consent from the Snowfed Editor: Julie Clements.

Thank You

The support from our Methven community since Irene's stroke in May, has been amazing.

We have received numerous phone calls, texts, visits, baking, meals, letters, cards, flowers, balloons, and offers of drivers/support – so many, that we cannot name you all – but please accept this as a personal THANK YOU from us.

Irene is now recovering at home, with ongoing rehab. You may see her around town in her helmet – which is a medical necessity.

Your support and encouragement has been, and is, greatly appreciated.

Greg, Jacqui, Craig and Irene Anderson

Thank You

Blake Peter Joseph

Anita and family wish to thank everyone for the cards, flowers and baking. It was very much appreciated.

Please accept this as a personal acknowledgement from all of us.

Thank you

Blake family



AGM

**Tuesday 6 August
7.00pm**

All welcome - nice warm
new meeting room

Methven Library & Museum
60 Main Street
Methven

Methven Cricket Club

AGM

Wednesday 31 July, 7.30pm

At the United Clubrooms

All Welcome

RSVP Contact Jono Pavey 027 565 9669

ACCOUNTS

For any queries, please call:

Sarah Robertson

302 8437 ext 709

Monday 9am - 1pm



**Mount Hutt College and Community
Farewell for Principal,
John Schreurs**

Thursday, 15th August, 2019



Members of the public, parents, friends of the school are cordially invited to attend this farewell.

Venue: Assembly Hall, Mount Hutt College

Date: Thursday, 15 August, 2019

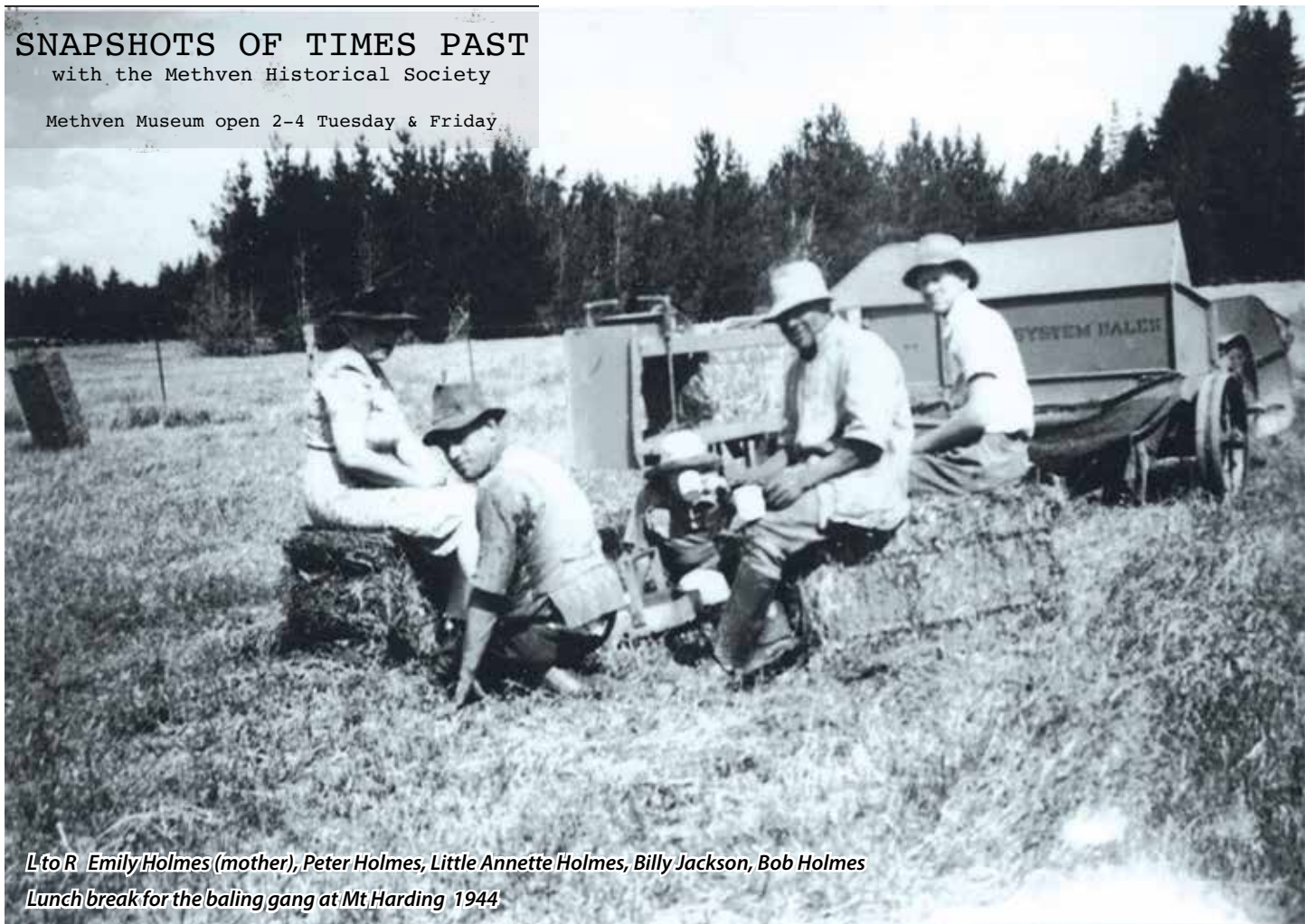
Time: 3.30pm An afternoon tea will follow.

Please RSVP to the school office on 302 8437 by Friday 9th August, 2019, for catering purposes.

SNAPSHOTS OF TIMES PAST

with the Methven Historical Society

Methven Museum open 2-4 Tuesday & Friday



L to R Emily Holmes (mother), Peter Holmes, Little Annette Holmes, Billy Jackson, Bob Holmes

Lunch break for the baling gang at Mt Harding 1944



MAY BROTHERS

contracting

- ⇨ Ploughing
- ⇨ Cultivation
- ⇨ Direct & Conventional Drilling
- ⇨ Fodder Beet Planting & Harvesting
- ⇨ Maize Planting & Harvesting
- ⇨ Forage Harvesting
- ⇨ Baling Round & Square
- ⇨ Grain Harvesting
- ⇨ Windrowing
- ⇨ Muck Spreading
- ⇨ Cartage
- ⇨ Supplementary Feed Sales



CALL NOW
to discuss your Maize
and Grass Feed
requirements
for this season!

Phil (Managing Director) 027 699 0795 phil@maybrothers.co.nz Office 03 307 8001 office@maybrothers.co.nz
Tim (Sales) 027 323 4048 tim@maybrothers.co.nz Dallas (Sales) 027 207 6682 dallas@maybrothers.co.nz
Ben (Baling, Chopping) 027 538 8336 ben@maybrothers.co.nz Nick (Cultivation, Drilling) 027 538 8369 nick@maybrothers.co.nz

C & R
ENTERTAINMENT
PRESENTS

Annie Jacobs

PINK FLOYD

-TRIBUTE-



The Revival crew with lucky ticket winners; Victor and Huia Campbell



just another brick in the wall...

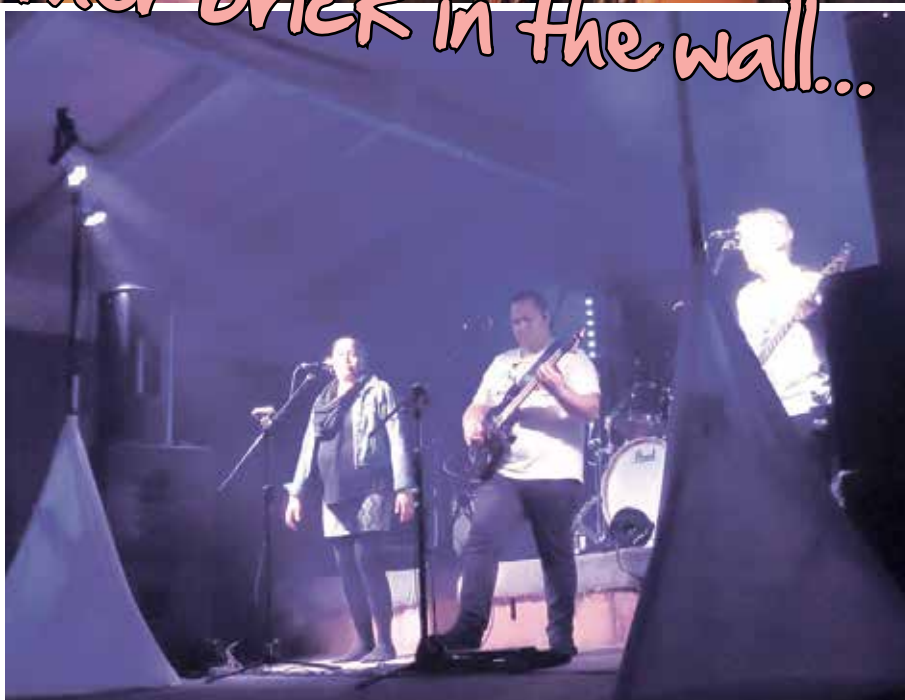
There was yet another great night of rock, blasting from The Blue Pub last Thursday night from the very talented kiwi band, "Revival" performing a variety of Pink Floyd numbers.

The night kicked off with a fabulous performance from powerhouse Tasha who warmed the crowd up, and then vocalled for the band as well.

The guitar solos were mega with deep grooving bass, smooth licks; melded together with powerful drumming and synchronised lighting which created a superb atmosphere.

Keep an eye out for their future shows where they'll pull off UB40 no doubt with the same awesome talent!

Thanks to the team at The Blue Pub for hosting a night of great music!



Property Brokers ^B

Affordable Lifestyle - 4396sqm



FOR SALE

METHVEN

WEB ID AL68108

44 Line Road

- 2010 built four bedroom home
- Open plan kitchen and living
- Central heating
- 2 car garage with power
- Patio and room for family to play
- 2 paddocks - ideal for horses/livestock



217 West Street, Ashburton

Greg Jopson 027 447 4382 gregj@pb.co.nz

The Kiwi Acre - 4100sqm



FOR SALE

METHVEN

WEB ID AL68109

39 Dolma Street

- 4100sqm* section plus driveway access (*subject to survey and title)
- Private with mountain views
- Great shape for development
- All town services to net boundary
- Fully fenced

217 West Street, Ashburton

Greg Jopson 027 447 4382 gregj@pb.co.nz

Lifestyle heaven



METHVEN

WEB ID AL68080

41 Dolma Street

- 2018 built as new 203sqm home
- Full town services
- Open plan living + separate lounge
- 143sqm of shed storage
- Plenty of paddock space for livestock, horses or business base
- Master with ensuite + Separate Bathroom



217 West Street, Ashburton

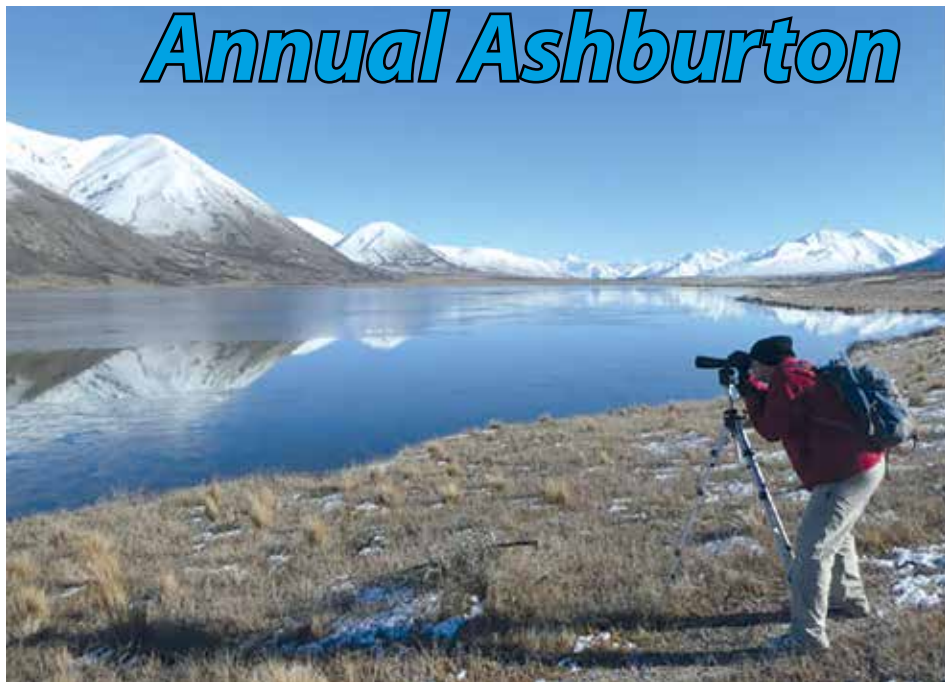
Greg Jopson 027 447 4382 gregj@pb.co.nz
Hastings McLeod Ltd Licensed REAA 2008

pb.co.nz



NZ Realtors
Network Ltd

Annual Ashburton



SPRING LYNNE MOTORCYCLES

**Service and repairs of all makes and models
of motorcycle, ATV and Side by Sides.**

**Sales of used farm motorcycles, ATVs
and Side by Sides.**

Ph 03 302 4939

1830 Methven Highway, RD6, Ashburton

Open Monday to Friday 8am -5pm



www.springlynnemotorcycles.co.nz



Philip Wareing Ltd

Line Road, Methven

Phone 302 8616

Fax 302 9657

philipwareingltd@xtra.co.nz



- Lime & Super Spreading
- Precision Nitrogen Sowing
- Hay & Straw Cartage
- Bulk Grain Storage
- Agricultural Spraying

- Log Cartage
- Stock Cartage
- Container Cartage
- Firewood Supplies
- Shingle supplies

- Daily Freight
- Swinglifting
- Cool Storage
- Silo Storage
- Grain Cartage

Philip Wareing 027 433 4897
Simon Wareing 027 228 9448
Murray Lumsden 027 433 4538

Gary Sheridan 027 672 3995
Grant Kenny 027 414 2886
Ian McLean 027 433 4545

Mark Wareing 027 433 4539
Matthew Oates 027 433 4541
Dan Kennedy 027 432 0898

Lakes Bird Survey

This is a great chance to see the Ashburton Lakes, the spectacular landscapes and the bird life in the middle of winter.

Each of the lakes has a team of surveyors and it's a great opportunity to learn from experienced birders.

Date: Saturday 27 July

Time: 8.30am at the Courthouse, Baring Square West, Ashburton

9am at Mt Somers Domain

Bring: Day pack, warm clothing, hat, sturdy footwear, lunch and snacks, drinks and a change of footwear. Carry your own first aid kit. Binoculars if you have them. Little notepad and pen. Info about identifying birds will be available.

Contact: Val Clemens 027 228 5620 or Peter Howden 303 6072

We hope to see you all there!



Cultivating practical farm planning solutions

- FARM ENVIRONMENT PLANNING
- NUTRIENT BUDGETING
- SUPPORT WITH ON FARM COMPLIANCE

 **CG Ag** 
Practical farm planning

Talk to Chris Gibbs P 021 317 669 E chris@cgag.nz www.cgag.nz



METHVEN TYRE & HIRE



Passenger Tyres • Truck Tyres
Agricultural Tyres • Punctures and Repairs • Wheels • Tyre Vulcanising

Hireage of equipment for Firewood, Gardening, Transporting, Moving House, Entertainment and Functions!

FULL RANGE OF ASHBURTON U-HIRE EQUIPMENT AVAILABLE THROUGH METHVEN TYRE & HIRE

24 CALL OUT SERVICE HOUR AVAILABLE | 03 302 8411
24 Methven Chertsey Rd METHVEN

NEUMANNSTYRES 



25 - 31 July



Danny Paget 24
Adrienne Goodwin
Josh Ree 19
Georgia Annear 23
Blai Evans
Steffi Furndorfler 13
Elizabeth Bell
James Robinson 16
Megan Carter
Kevin Farmer
Lilli Belbin 12
Jerome Campbell 7
Heath Heaven 51
Kristina Shepherd 50
Bella Slumskie 11

BELATED

George Mannering 30
Joseph Connolly
Daniel Clark 9
Kathryn Clark 40

CONGRATULATIONS!

KATHRYN CLARK

Pop into Methven 4 Square Supermarket for your surprise!

the brown pub

your **true** country pub

THURSDAY SCHNITZEL NIGHT

Chicken or Beef Schnitzel,
plus chips, salad & gravy.
Every Thursday
FOR ONLY \$16
Gluten Free Options too!



KARAOKE THIS FRIDAY FROM 9:30PM

Bring your singing voice or just be support
crew for a fun Friday night!

TUESDAY NIGHT - POKER NIGHT



Texas Hold'em Poker is on every
Tuesday night from 7:30pm
Light supper provided.
All welcome - come and have a go!

LIQUOR CENTRE SPECIALS ON NOW!

www.fb.com/BrownPubMethven P 03 302 8045

Local Elections

Candidate information day

Ashburton District Council electoral staff will visit
Methven on Friday 2 August, 2019 to provide candidate
information and accept nominations.

When	Friday 2 August, 2019
Where	Mt Hutt Memorial Hall Boardroom, 160 Main Street, Methven
Time	10.00am until 2.00pm

Nominations for the local body elections opened on Friday
19 July and close at 12 noon, Friday 16 August. Election day
is Saturday 12 October, 2019.

The Preliminary Electoral Roll is available to inspect at
the Methven i-SITE along with Candidate Information
Handbooks and nomination forms. You can also download
the handbook or forms from the Council website
ashburtondc.govt.nz/elections

For further information about the nomination or local body
election process, contact the Council office by phoning
(03) 307 7700 or visit the website.

Hamish Riach
Chief Executive



ashburtondc.govt.nz

"Do it Once, Do it Right"



Hydrovac Services



16 ton Wheel Digger - General Farm
Maintenance. Mulching, Race Cleaning



Road Construction and Lime Capping



Land Prep and Dairy Conversions



Power, Cable, Fibre and Water installation

GDC

Greg Donaldson Contracting Ltd



15 Malcolm McDowell Road, Ashburton Office 308 8479 Mob 0274 338 003
Web www.gdc.net.nz Email donaldsoncontracting@xtra.co.nz



Nominations open

People wishing to be a leader in the Ashburton District and make important decisions for the future of their community are being encouraged to put their name forward for the local body elections.

Nominations for the Ashburton District Council, Methven Community Board and Ashburton Licensing Trust opened today, and will close at 12 noon on Friday 16 August.

Council Chief Executive, Hamish Riach says being elected to local government is a chance to make a difference on issues that affect your community.

"Council representation is all about local people making local decisions. If you are passionate about our district and its people, you want to build your leadership skills and make a positive contribution to the future of our community, consider putting your hand up for election this year."

The Council is running a free Candidate Information Evening on Tuesday 23 July at the Council Chambers to help prospective candidates understand what is involved with being an elected member. The information evening will start at 5.30pm. A Candidate Information Handbook will also be available on the night and can be downloaded from the Council website.

Council electoral staff will be visiting Methven on Friday 2 August to provide candidate information and accept nominations. The candidate information day will take place in the Mt Hutt Memorial Hall Boardroom from 10.00am until 2.00pm.

Eligible voters are also being encouraged to check they are enrolled and that their details are correct, ready for the upcoming elections. They have until 16 August to ensure their information is correct. People can do this by checking the Preliminary Electoral Roll, which is available for inspection at the Council office, 5 Baring Square West, Ashburton; Ashburton Public Library, corner of Havelock and West Streets, Ashburton; Hinds Convenience Store, Hinds; Cafe Mayfield, Mayfield; Methven i-SITE Visitor Centre, Main Street, Methven; and the Rakaia Mobil, State Highway One, Rakaia.

Voting papers will be sent out from 20 September and need to be completed and posted in time to reach the electoral office by 12 noon on Saturday 12 October.

For more information about standing for election or to download a nomination form, visit ashburtondc.govt.nz/elections.

Volunteers Needed

The Fox Landfill flooded in March. Rubbish and debris were strewn down the Fox and Cook Rivers, through nearby bush and onto West Coast beaches.

Many of these precious landscapes are part of Te Wāhipounamu – South West New Zealand UNESCO World Heritage Area. The landfill breach has devastated the environment, and the aim is to complete the clean-up by spring to avoid the spring floods. If rubbish is not removed by then, it will be washed out to sea where it will have a catastrophic impact on wildlife.

Conservation Volunteers New Zealand is supporting the Department of Conservation with this massive clean up effort by sending a team over from Christchurch on Monday 5th until Friday 9th August.

Volunteers receive accommodation, lunch and dinner for each workday. If you would like transport and are interested in helping with this very important project then please contact Hamish Fairbairn at:

hfairbairn@cnvnz.org.nz or 021 399 040.



LE	Ca	H2O	2.0mm	0.5mm
Lime Equivalent %	Calcium %	Moisture %	Seive % Passing	Seive % Passing
96.2	38.0	3.0	98.6	56.2



Mount Hutt Lime is now supplying an extremely high quality, low moisture Ag Lime, delivered direct to farm. Call for a Quote.

To ensure the best quality, price and service call us DIRECT on:

0800 METHVEN or 027 542 7637

Now supplying Lime Flour for calving cows

We also supply a range of dairy track products and pond sealing clay along with other Ag Lime products.

Frozen Shoulder

Frozen Shoulder or Adhesive Capsulitis is a common shoulder condition which presents in three stages with acute severe pain of non-specific onset and then a loss of range of movement- particularly reaching behind your back. It is believed to be a thickening of the shoulder capsule. On a brighter note it always recovers-stage 3-but can take up to two years!

There are common features- often affecting women aged 40-60 years and sometimes after an injury or surgery. It can also be more common in Diabetics.

Physiotherapy can not resolve a frozen shoulder. They can help educate on the condition and may be able to assist in pain management during the painful initial onset- using modalities like Transcutaneous Nerve Stimulation (TENS) or acupuncture. At the third stage stretching and exercises may be beneficial.

I was interested to read Duchas et al (2019) who found a series of eleven clients benefitted from increased range of motion and decreased pain after mobilisations and stretches for frozen shoulder. That was quite contrary to my clinical experience and understanding of the literature so I did a bit more reading!

The Cochrane database provide a summary of studies and mark their quality to advise on best practice. In 2014 they did not find that manual therapy and exercise were as effective as a glucocorticoid injection

in the short term. This injection can be beneficial in the first stage- about the first six months of the condition. As always "more research is required".



"It's a frozen shoulder."

So in the world of best practice for musculoskeletal conditions we are left with various shades of grey! In the clinic I would usually try a couple of sessions of education, pain management, manual therapy and stretches. If we see no change in this time I discuss with the client and we may leave it a month and have a review - the goal being to resume therapy in the third stage where the pain has settled and we work to restore range of motion.

Frozen shoulders aren't fun but they do resolve. Understanding the process can often be the most helpful part of the journey.

If you have any questions give us a shout at Contact Physiotherapy at the Methven Medical Centre 302 8205.

A Manual Therapy and Home Stretching Program in Patients With Primary Frozen

Shoulder Contracture Syndrome: A Case Series Lirios Dueñas, Mercè Balasch-Bernat, Marta Aguilar-Rodríguez, Filip Struyf, Mira Meeus, and Enrique Lluch, Journal of Orthopaedic & Sports Physical Therapy 2019 49:3, 192-201



METHVEN, WE'RE COMING TO VISIT

Our qualified technicians are in Methven twice a month.

Don't put up with computer problems any longer. Call us and schedule a visit today!

AUG

14

AUG

28

Bookings fill quickly, avoid disappointment - call today

**COMPUTERS FIXED
FAST FIRST TIME**

- Laptop repairs
- Email
- Backup systems

- Desktop repairs
- Data recovery
- Internet

Screen repairs - using genuine Apple parts

SAMUELS SUMMIT SERIES @THE BLUE PUB

Friday July 26
METHVEN - SPEAK UP TOUR 2019

Friday - Saturday August 9-10
WHITEOUT 2019 & RAIL JAM

Saturday August 17
MYFC OKTOBERFEST

Saturday August 31
LI'I ALAIMOANA - SERIOUSLI'I?

Saturday September 7
CORONA WINTER TOUR - MAKO ROAD

Friday September 6 - Sunday September 8
MONS ROYALE BIG 3 DAY SALE

Saturday September 14
TAKING THE PISTE OPEN MIC NIGHT

Saturday September 21
PEAK TO PUB MULTISPORT EVENT

FIND OUT ABOUT ALL THESE AWESOME EVENTS HERE:
www.fb.com/TheBluePubMethven/events/



SET SAIL IN THE SPIRIT OF ADVENTURE

Julie Clements

This year's Spirit of Adventure 10 day sail has attracted the interest of ten Mount Hutt College Yr 10 students.

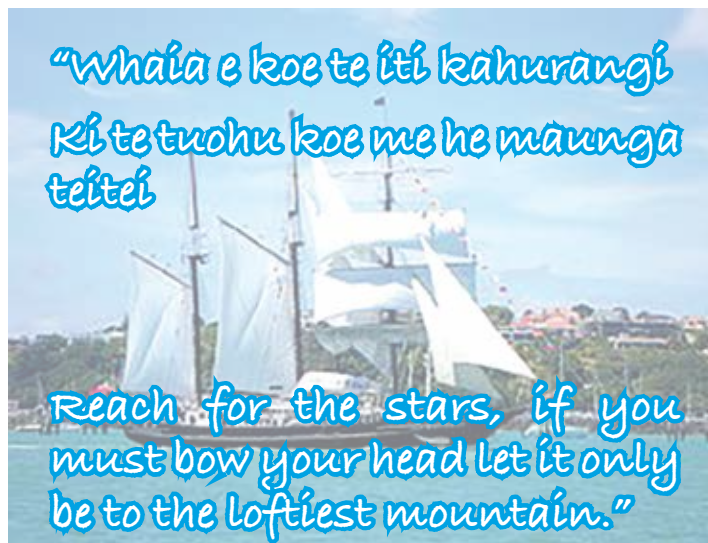


Back Row: Megan Foster, Tamara Bird, Reuben Brown, Colt Hill
Front Row: Ryan Kulsen, Isla Miers, Daniel Jones, Thornton Taylor
Absent: Oliver Maw and Emma Begg

Fundraising for their voyage in September, they have organised two car wash weekends – you will find them at Methven Mobil this weekend - 27 & 28 July between 9am and 4pm and the following weekend 3 & 4 August at the Rakaia Mobil station.

Offering full exterior car wash, tyres, rims, and windows wiped, why not pop down and support their fundraising effort.

The Spirit of Adventure is an experience of a lifetime and a fantastic opportunity for young New Zealanders and having been accepted for this year's trip, the Mount Hutt College students say they are most



looking forward to the sailing, early morning swims and the team activities.

"I am looking forward to it and it can't come any sooner"

Thornton Taylor

"Can't wait to get aboard and partake in such a physical and mental character building experience, thankful for being chosen"

Emma Begg

"I look forward to meeting new people and getting to know each other a lot better"

Oliver Maw

Well, I know one vehicle that needs a good clean, so I will be there!

Concrete paths, patios, driveways. Repairs or new placements

**KT's skilled staff can help with all your
concreting requirements.**



**Job done right first time!
Competitive pricing.**

**Call now for an obligation free quote
Open weekdays 8am – 5pm
Quality service EVERY time**



**www.ktscontracting.co.nz
Phone Ben on 027 458 2000**



A 10 Day Voyage on board Spirit of New Zealand is a life-changing experience – unlocking your potential, leaving you ready to face your future!

You'll be one of over a thousand young Kiwis each year who get on board to experience the trip of a life time. You'll leave with a whole new set of skills, lots of new friends and a new confidence to take on the challenges in life. The whole voyage is based on learning by doing. You'll face all sorts of challenges and take part in lots of activities on the ship, on the water, on the shore and leaving you with a level of self-empowerment only found on the Spirit of New Zealand.

Increased confidence and skills: On Spirit you'll improve your communication and leadership skills and learn the importance of self-awareness and being a part of a team. As you face the various challenges your confidence will increase as you increasingly move outside of your comfort zone.

New friends and connections: You'll meet 39 other young kiwis from a wide range of backgrounds and cultures. Over 10 days you will come to depend on each other, learn tolerance and acceptance and create close and lasting bonds. Once you leave the ship you are connected to the Spirit community for life!

**You'll have the opportunity
to return as a crew member
and share your experiences
with others.**



SHACKLETON'S

@ Brinkley Resort

New Zealand cuisine with an Italian spin

Winter is here.....gather your friends
& enjoy our warm cocktail of the week by the fire!

For the men.....
Captains Hot Buttered Rum



For the ladies.....

Hot & Spicy Antoinette



Entrees:	Soup du Jour	\$15	Mains:	Merino Lamb Rump	\$38
	Artisan Bread & Dips	\$15		Canterbury Confit Duck	\$38
	Tandoori Prawns	\$20		BBQ Pork Belly	\$36
	Charcuterie Board for 2	\$25		Angus Canterbury Beef Cheek	\$35
	Pan Seared Scallops	\$22		Aotearoa Salmon	\$35
	Strozzapretti Napolitano	\$18		Strozzapreti Napolitano	\$28
Chefs Share Selections:			Desserts:	Crème Brulee	\$16
	Polenta & Herb Fries	\$15		Dark Choc Fondant	\$18
	Classic Margherita Pizza	\$22		Petite Lemon Meringue Pies	\$18
	Capricciosa Pizza	\$28		Chefs NZ Cheese Selection	\$15
	Pollo Pizza	\$26			
	Vege Pizza	\$25			

Relaxed family dining at its best !

For bookings contact us on 03 302 8885 or info@brinkleyresort.co.nz

METHVEN HISTORICAL SOCIETY

Unlocking the Treasures of Methven

Hidden in the diaries, letters, books and minute logs stored in the Methven Museum is a huge amount of history about our township.

The Methven Historical Society is looking for a small group of people able to spend some time – probably about 20 minutes a page – to unlock this treasure. You don't need to live in Methven or even come to meetings!

The pages of the book will be scanned and you receive say two pages by email and you work out what is written on them – magnifying them on the computer for easy reading. You type out what is written on that page and return to the coordinator who sends you a few more pages

when you are ready. What is a massive job for one person becomes an easy job for a group of people. The information can easily be data based and then everyone has access!

The first book in this project is the Methven Loyal Orange Lodge Minutes – 129 pages – which contains Methven history from 1893 to 1931.

When this initial project is finished and “ironed out the crinkles,” there are many other histories to unlock – including the Morgan Diaries.

Expressions of interest to Kath Woodley, 021 0818 7218 or jelly.k@xtra.co.nz

New Faces at the Community Trust



Tina Stevenson

The Community Trust of Mid and South Canterbury is delighted to welcome its three newest Trustees; Tina Stevenson (Waimate), Tania Reuben (Ashburton) and Nathan Mills (Timaru).

Who are our new Trustees?

Tina Stevenson is an Associate Chartered Accountant and the Corporate Service Group Manager at Waimate District Council. Her Trustee roles include the Waimate District Charitable Foundation, Waimate Fire Brigade Educational Trust and several years of past School Board of Trustee experience. In her spare time, Tina enjoys all things sport and is a keen supporter of Waimate Rugby. She is always looking to plan the next rock concert experience. Tina is married with two adult children, lives in Waimate and is a passionate advocate for the District.



Tania Reuben

Tania Reuben was raised in Ashburton along with 5 siblings and has worked in the shearing shed industry and freezing works. In 2008 Tania became a whanau caregiver for CYFS adding 6 children into her existing family of 5. In 2009 Tania became a committee member of the Hakatere Marae and Head Ringawera, going on to become a trustee. Tania's interests are music, movies and whanau gatherings.

Nathan co-founded Ashburton-based Genesis Private Equity Ltd in 2015 and since then the business has raised and manages ~ \$36 million. GPE remains the only South Island-based private equity firm which accepts investment from wholesale investors, and invests those funds in New Zealand based small to medium enterprises. Prior to this venture Nathan was a senior commercial banker based in Timaru, operating in the Mid and South Canterbury market with deep networks throughout the wider region. Previously Nathan was an award winning Journalist working for RNZ National. He's currently Chairman of YMCA's Butler Street Trust, is a keen golfer and classic car enthusiast. Nathan lives in Timaru with his partner Lisa and two school-age children.



Nathan Mills

Who are the other current Trustees?

Tina, Tania and Nathan join seven existing Trustees including Chair David Forman (Timaru), Deputy Chair Alistair Wing (Mayfield), Jan Hide (Peel Forest),

Karen Simpson (Tekapo), Lisa Stevenson (Temuka), Jane Argyle-Reed (Ashburton) and Janine Quigley (Timaru). The new appointments bring the number of Trustees back to ten and ensure that the Trust has appropriate geographic representation as well as the relevant skill set to perform its functions effectively.

Whom are the new Trustees replacing?

In 2018 the Community Trust farewelled three Trustees including Geraldine lawyer Jennifer Strauss who assisted the Trust with decision making, investment and policy development over a period of 7 years. The board also both welcomed and farewelled Sam Callander (Timaru) and Te Hurinui Clarke (Ashburton) who each brought a wealth of expertise and insight to the board when they were appointed in June of 2018. As chance would have it however both Sam and Te Hurinui have since been called from the Trust's funding area by their other professional commitments.

Community Trust Chair David Forman commented “We wish our retiring trustees well and acknowledge their contributions to the Trust. Jennifer, through her legal skills, community knowledge, wisdom and leadership made a significant impact over the past 7 years. Likewise, both Sam and Te Hurinui, even during their short time on the Trust, made valuable and meaningful contributions.

The Board is delighted to welcome our three new trustees. They all bring a broad range of expertise, community involvement and experience and we look forward to the contributions they will make”.

The Community Trust of Mid & South Canterbury uses returns from investments to fund its philanthropy. The Trust supports not-for-profit organisations and projects which contribute towards achieving a region of healthy, vibrant and caring communities.

To learn more please visit www.comtrust.org.nz



**Community
TRUST**
Mid & South Canterbury



Babysitting Services Now Available!

Want to enjoy some time away from the kids with the peace of mind that they're in good hands?

We've got you covered!

We offer..

- Hand picked
- Police checked
- Reference checked
- First aid trained
- Qualified babysitters

Contact:

Hannah Mentink on 027 726 6015 or
info@newzealandnannies.co.nz

JACOB HOLDAWAY CONTRACTING LTD

BOOK IN YOUR PREFERRED FODDER BEET PLANTING DATE NOW

Operating two precision fodder beet planters, 375mm or 500mm row spacings, with fertiliser available down the spout.

These drills are also designed to plant maize, swedes, beans, spinach, carrots, red beet, and many other small seeds.

To create an ideal seedbed, pre-planting cultivation services are also available.



Benefits of 375mm planting include:

- Early canopy closure
- Even plant distribution for optimal growth
- Grid planting pattern
- Increased yield

CALL JACOB TODAY 0274 225 464

www.jholdawaycontracting.com



Country by Design

*Is your sofa or chair looking tired,
too low or needing extra filling?
We can assist with this.*

*From choosing new fabric, new
legs, to our great upholsterers; we
can bring your furniture back to
new.*

Our shop hours are Tuesday to Friday 1-5pm.
140 Forest Drive
ph: 302 8062

D & A FENCING



donaldmiddleton100@gmail.com

CARTER'S

**Free fit & balance on all passenger tyres
for the months of June & July only**

As NZ's largest independent tyre dealer, we pride ourselves on providing unbiased, expert advice, products & service for all your needs:

- Car Tyres
- Truck Tyres
- Tractor Tyres
- Punctures
- Wheels
- Batteries
- Tyre Vulcanising
- On farm servicing

24HR CALLOUT

MID CANTERBURY

Chris Gottermeyer | 022 317 5025
9 Line Road, Methven

0800 4 CARTERS | www.carterstyres.co.nz



100% NEW ZEALAND
OWNED & OPERATED



Your Digital TV Experts

- Aerial / Dish installations and repairs
- Prewire of new homes
- TV wall mounting
- Cell phone aerials
- Home theatre installation

Servicing

Ashburton - Geraldine
Methven - Rakaia

and everywhere in between

ASHBURTON TV & AUDIO

PH. 03 308 7332 / 027 277 1062
ashburtontvandaudio.co.nz

Making Music Accessible to All



It's a big focus at Mount Hutt College; encouraging students to learn a musical instrument. And huge numbers have chosen to take up this opportunity with over 50% in year 7, 8 and 9 involved in learning an instrument. The key has been making lessons on many of the instruments as affordable as possible for all families. For flute, clarinet, saxophone and all brass instruments there is no cost for the lessons at all and just a \$30 a term fee to hire the instrument.

There are now so many students involved that the school has created a concert band. While 28 students are currently involved it is expected that within the next 6 months those numbers will have swelled to over 40 students and the band will be among the largest secondary school concert bands in the country. The number of students involved in chamber music (small instrumental ensembles) has also increased five-fold in the last 12 months, and the numbers are expected to continue to explode further and further each year for at least the next 5 years.

Where do all the instruments come from?

The school already owned some, which had been assembled over the past decades, but not nearly enough to cope with the numbers now involved. We have been very grateful of the support of Brent Gray and the Ashburton Intermediate as well as the Ashburton Silver Band, the Ashburton Salvation Army and Cashmere High School for the huge numbers of instruments all have

loaned us to allow as many students as we have currently to engage in the wonderful world of music. But even with these we are not even close to the further numbers required to



sustain the expected growth of the coming years.

To this end, Mount Hutt College will be hosting a fundraising concert and auction in the school hall on Friday 9 August at 7pm. The

event will showcase a range of performing arts groups from Mount Hutt College and the local community from the MHC Chorus to the Big Little Theatre Company, the Mount Hutt

College Concert Band to Contemporary and Highland dancing, the Angelettas, soloists and everything in between! It will also feature a silent auction and food/drink sales too.

All money raised will fund the expansion of music within Mount Hutt College, to purchase instruments so that anyone, regardless of their family's financial situation, can have the opportunity to learn an instrument and have access to all the benefits and

opportunities this creates.

Tickets are available from the Mount Hutt College Office and Methven i-Site. Door sales will also be available on the night.

GROW YOUR OWN

Mary Ralston

It had to rain sometime, and it sure did – 70 mm last weekend. So it is much too wet to do anything in the garden but if you have a greenhouse, cleaning up is always a good thing to do if you feel like some outdoor time.

Old plants should be removed, and compost, bokashi or kitchen scraps can be dug in to the soil. Its not too late (or too early) to plant a green manure crop in greenhouses – mustard is very quick growing and tolerates cool weather, so after you've added some goodness, plant some mustard (or rocket) seed. They can be harvested to eat or dug into the soil in mid-spring.

We're nearly at the end of the no-growth period (4 weeks before the shortest day and 6 weeks after) so if you get them in the ground they will germinate before long.

Greenhouse plastic can get very dirty and dusty or get a bit of a covering

“We're nearly at the end of the no-growth period (4 weeks before the shortest day and 6 weeks after)”

of mould or lichen that will prevent some light coming in – I use a soft cloth and some warm soapy water to clean the plastic of my greenhouse. If you don't have a greenhouse or tunnelhouse, it's also a good time

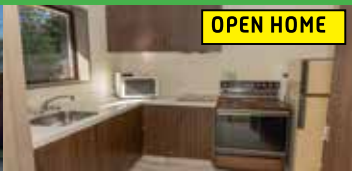
to be thinking about it. There are lots of options and homemade ones are an inexpensive option. More on this later.

With fresh salad greens rare at this time of year (unless you do have rocket or parsley growing in a greenhouse), sprouts make a nice addition to winter meals, sandwiches or salads. Simply soak about a third of a cupful of mung bean seeds in a jar of water for about a day. They will absorb a lot of moisture and double in size. Then, drain the seeds but keep them moist by washing frequently with warm water. Keep them in a warm place but not in a cupboard or you may forget them! Soon they will send out sprouts and can be eaten anytime.

They are very nutritious as well as delicious.



METHUEN



OPEN HOME

DOWNSIZING OR ENTERING THE PROPERTY LADDER?

If you are looking to downsize, taking your first step onto the property ladder, or looking to invest; this is the property for you. This large 1980's unit, built of summerhill stone has 2 double bedrooms with built in wardrobes. The generous living area, kitchen/dining is open plan and heated by a floor heatpump. With new carpet, paint and LED lights the property is ready for you. In addition you have an internal access single garage, garden shed, separate laundry and easy care garden.

Price guide low \$300,000's

Open Home Saturday 27th July 12.00-12.30pm 318 Colcord Place

METHUEN



VENDOR RELOCATED - ACTION REQUIRED

This fantastic 200 sqm home with mountain views, sits on a 1,012 sqm offers space was built with family in mind. With a family kitchen/dining area, large lounge area, four generous bedrooms and two bathrooms this property can cater to everyday family living with ease. Downstairs has the kitchen and living area, two bedrooms, the main bathroom plus office area and laundry. Upstairs comprises of two bedrooms, one with fantastic mountain vistas, a bathroom and separate toilet. The large backyard area is beautifully established and private with plenty of room for the children to run around safely while you sit back and relax and enjoy the peace and quiet this location offers. This property has so much to offer, call us today to arrange your viewing. **\$498,000**

LAKE COLERIDGE



LAKE COLERIDGE SECTION

With sections running out fast, don't miss this opportunity to be able to build your holiday home surrounded by stunning mountains and high-country scenery.

This 500m² section is located on a quiet cul-de-sac, very close to the tennis and basketball court and play ground.

Enquiries over \$119,000

11 Ryton Place

METHUEN

NEW LISTING COMING SOON

- Two double bedrooms both with external access
- Low maintenance 583sqm back section
- Modern open plan kitchen and living area
- 127sqm floor area
- Located close to the town centre

METHUEN



CAMROSE ESTATE - STAGE THREE NOW AVAILABLE

Great location close to town with a large reserve area close by for your enjoyment.

This well designed and managed subdivision offers that something extra and is the perfect place for your new home. Section sizes from 725m² to 1745m². These sections are selling now.

Priced from only \$155,000

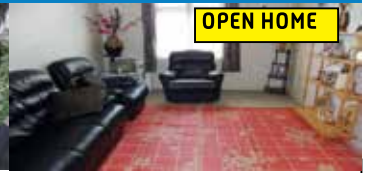
METHUEN



BRINKLEY RESORT

Each unit consists of a one bedroom studio apartment with spa bath, kitchen and own entrance plus a two bedroom fully contained apartment. Both units have access to a laundry in the entrance way. These units are fully managed while you aren't there and you can enjoy the income from these. Ongoing maintenance is carried out by the Property Manager. **From \$125,000 + GST (if any)**

ASHBURTON



OPEN HOME

IDEAL FIRST HOME OR INVESTMENT

This family home is close to town and would suit a first home buyer or investor. There are three spacious double bedrooms and one bathroom. The property has a large lounge with separate dining and laundry. The exterior cladding is roughcast and sits on a well maintained section. The property is heated by a heat pump. To complete the property it has a single garage with off street parking and a vegetable garden. The current tenants are paying \$290 per week, so with this asking price you can achieve a 6% return.

\$250,000

Open Home Saturday 27th July 10.00-10.30am 129 Victoria Street

RAKAIA



OPEN HOME

A CHARMING PROPOSITION

This charming character home is appealing from the moment you walk through the front gate, beautiful woodwork can be found throughout this light and airy home. The three bedrooms are generous in size, with a fourth room a fantastic office or nursery room. The spacious lounge and kitchen area has a heat pump, wood burner and HRV to keep the home warm and dry in the winter and cool in the summer months. This secure established 1012sqm section offers plenty of room for the children and pets to enjoy. Separate laundry, double garage plus another single and ample off street parking.

Enquiries over \$359,000

Open Home Saturday 27th July 11.00-11.30am 33 Bridge Street

METHUEN



CENTRAL APARTMENTS - METHUEN QUALITY ACCOMMODATION

Located in the centre of Methuen, the Central Apartments are the newest Luxury block of 6 Apartments to be built in Methuen. Each of the six apartments have quality furnishings. All apartments come with an open plan lounge and kitchen with a high standard of fixtures and fittings. Each features it's own private deck with magnificent views of Mt Hutt and the surrounding mountain ranges. All six apartments comprise two bedrooms with a mix of doubles or singles for flexibility. With the option to rent as a one bedroom apartment.

There are different bathroom configurations with baths, spas and showers. Plenty of on site parking.

\$1,750,000 + GST IF ANY

BARRHILL



1/2 ACRE IN THE COUNTRY

Barrhill Village is in the heart of the Mid Canterbury plains. Come and build your country home in this lovely small rural village. This section is 2023m² with established trees, Oak Avenue boast beautiful trees and countryside views. On the Barrhill water scheme and is currently to the boundary for easy access. Historic village, building subject to Ashburton Council approval. **\$165,000**

10 Oak Avenue

TERRACE DOWNS



TERRACE DOWNS - LOT 38

Build your dream getaway retreat on the edge of fairway 5 with impressive Mountain views. Located down a quiet lane way. Terrace Downs is an Internationally renowned Golf Resort. Adjacent neighbours have built so you know what's in place and what is possible. Activities in the area include skiing at Mt Hutt and the club fields. Also on site bar and restaurant. Services on the boundary. **\$165,000**



Maree Firth
Principal/
Property
Consultant
027 542 1364



Rosa Dekker
Property
Consultant
027 465 5387

Sam Gregory
Property
Manager
027 886 0179



Amanda Pannett
Office
Administrator
03 303 3093





MP for Rangitata Andrew Falloon



To the Beehive and Beyond

Nearly two years ago I first arrived at Parliament as a newly elected MP. Despite a six month campaign to get ready for turning up, it was a daunting experience.

Walking into the debating chamber (affectionately known as the bear-pit), thinking of the fearsome orators who had been there before; (titans like Rob Muldoon, David Lange, John A. Lee); for new MP's (Member's of Parliament), it was some weeks before we'd finally get an opportunity to deliver our maiden speeches. It was a chance to hone our message, and get used to the dynamic of 120 MP's crammed into a small and intense space.

I've been pondering those first few weeks in the days since Youth Parliament sat this month. 120 Youth MP's from around the country, aged 16-18, or half the age I was when I nervously arrived at Parliament.

For us here in the Rangitata electorate, the successful candidate was Phoebe Scarsbrook. She applied along with sixteen other young people from across Mid and South Canterbury. They were all of high calibre, but her conviction and humility, which I see as two important traits in politicians, shone through.

Her sense of right and wrong, her willingness to call out injustice, and her passion to make our country and our community a better place. All things that made her the obvious choice to represent our region in Youth Parliament.

To give Phoebe the opportunity to make the most of her Parliamentary experience I flew her up for a day back in March. I showed her around, and she sat in on a Select Committee and watched Question Time; two things she would be taking part in as a Youth MP.

She took to it like a duck to water, asking perceptive questions and confidently engaging with some of New Zealand's most senior politicians.

Recently Phoebe and 119 others arrived at the Beehive to sit for the two day Youth Parliament. Youth MPs had the choice between asking a Minister a brief question, or delivering a three minute speech. Many chose the easier option of a question, but not Phoebe. She had something to say.

And when her time came, she delivered. A speech on feminism that got National, Labour and Green MPs all tweeting, with one describing it as "blistering and inspiring."

Her fellow Youth MPs gave her a standing ovation. Sustained applause for a powerful message, perfectly delivered.

We often see through our TV news the worst in our young people, a false narrative that doesn't reflect the wonderful things our younger generation are doing. In Phoebe, and in so many others in our community, we see the best.

As your local Member of Parliament, I'm here to serve you.

My offices in Ashburton and Timaru are open during business hours.

Please call (03) 308 7510 for an appointment, or email me directly at andrew.falloon@parliament.govt.nz

YEAR ROUND. JOB DONE.

f JacksonHolmesContracting
YouTube SimSj4tiZ5l



Feed Trading
Baling & Chopping
Cultivation & Drilling

Fodder Beet Planting
Manure & Effluent Spreading
Cartage



Andrew Jackson
027 439 3387



Todd Holmes
027 279 8926



Bruce Lilley
027 553 3085



Harry Jackson
027 748 9599



David Stafford
027 557 0530

CALL US TODAY TO DISCUSS YOUR REQUIREMENTS!

03 303 0872
www.jacksonholmes.co.nz



jacksonholmes

CULTIVATION | DRILLING | FORAGE HARVESTING | BALING | WRAPPING | MOWING | CARTAGE | WEIGHING/DRY MATTER TESTING



FOR ALL VEHICLE REPAIRS -

- maintenance services
 - engine
 - WoF's
 - tyres

**Call us on:
03 302 9077**

**Monday - Friday
8am to 5pm**

fiba
families impacted by addiction

Every Tues 6.30pm
Bowling Rooms, 58 Melcombe St
Ashburton. PH 021 687 523
or find us on facebook

SUPPORT | INFO | FRIENDSHIP

CLASSIFIEDS

DAIRY farm assistants urgently required for a farm near Ashburton.
Please apply nicky@ruralpeople.co.nz

CHIMNEY Sweep available also firebox and flue repairs. 027 404 4226 or 302 9413

JUNKO Acupuncture ACC treatment provider. For booking and enquiries, phone 302 8888

FIREWOOD & Treework. Delivering semi-dry or just split firewood for next winter. Tree removal service by experienced team. Call Rini on 027 451 7300

THAI Chilli Open 7 days, 5pm to 9pm. Buffet takeaway - \$12 small, \$15 large. Dine in buffet \$28 Adult, children under 12 charged by age. Ph: 303 3038

SAVE The Children Mt Hutt Tea Towels and Magnets will be at the Craft Fair

VILLAGE Takeaways and Pizzas. Open 7 days. Phone 03 302 8192. Find us on Facebook or at VillageTakeaways.co.nz

METHVEN Motors has solar panels for sale come see your friendly auto electricians for advice 170 Main Street 302 8201

METHVEN Sports Massage Clinic -view/book online. Ph: 027 681 3201. Open 7 days

CHIMNEY Sweep. For a clean professional service call Dan McKerron Chimney Sweep & Repairs 021 118 7580

LOG Splitter for hire. Dixon Machinery & Dieseltex, phone 302 8946

FOR a wealth of Freemason information and local history:
<http://www.methvenlodge51.org>

ADBLUE available at Methven Motors: 302 8201

Please do not walk your dog on the fields or through Mt Hutt College grounds.

No dogs are permitted on Mt Hutt College property, unless they are a Disability dog.



NEW BEGINNERS CLASS

STARTING 15th AUGUST

THURSDAYS 10.30-11.30am

MT HUTT MEMORIAL HALL

ALL AGES - ALL ABILITIES

Classes run through to December 12th

These programmes are evidence based and have gained worldwide acceptance by Arthritis Foundations and Societies, and are proven by scientific studies to be safe and effective.

Come along and start your Tai Chi journey at this class, which allows you to discover the principles of balance and movement before moving to the more advanced level.

Dr Lam's Tai Chi for Health programmes
www.taichiforhealthinstitute.com

Inquiries and bookings to
margaretlee704@gmail.com



PGG Wrightson

Customer Service Representative METHVEN

We are looking for an enthusiastic and energetic person who is committed to great customer service, has a keen interest in the agricultural sector and is looking to build a career in this exciting industry.

PGG Wrightson is one of New Zealand's leading nationwide providers of products and services to the rural sector. We are helping grow the country through our knowledge, service and expertise. This role is a seven-month fixed-term position, working on Saturday mornings 9am - 12pm and is based in the Methven Rural Supplies store. Additional hours may be offered as and when required.

About the role

Based in-store, you will provide knowledgeable sales advice and service to a range of agricultural clients. You'll be heavily involved in the day-to-day manual operation of the store such as assisting with stock management and displays, sales processing and deliveries. You'll have a keen interest and passion for the local agriculture industry, and your excellent communication skills will set you apart.

Duties and responsibilities:

- Provide sound advice to a variety of customers based on their needs
- Pro-actively solve queries and problems from customers, suppliers and other staff
- Process sales and product requests with efficiency

- Order, unpack and display merchandise according to company guidelines
- Undertake Forklift, Ute and trailer driving and delivery duties.

Skills and experience:

- Previous experience in the New Zealand rural sector is essential
- A full, current and clean New Zealand driver's licence
- Experience driving and backing trailers is highly desired
- A team player who can roll up their sleeves and contribute to outstanding results
- Good physical fitness as regular heavy lifting is required
- Previous retail and/or sales experience is an advantage but not essential
- Proficiency with Microsoft Office and Outlook is essential.

We are committed to growing our employees and we develop leadership and technical expertise at all levels of our company. We provide extensive in house sales and technical training and offer a number of benefits including retail buying privileges. Get a foot in the door and build your career with PGG Wrightson.

Apply now

Apply now or to find out more about working at PGG Wrightson or view other opportunities visit <https://careers.pggwrightson.co.nz/search> and enter reference number 10602SNF.

Applications close on Sunday, 28 July 2019.

Word of the Week

agelast



a person who never laughs



Humm Engineering
Steel Fabrication, Welding & Repairs

55 Line Road METHVEN

AS/NZS 2980 Cert Welding

Mobile On Call Service Truck

No job too big or small in a modern fully equipped workshop our skilled and hard working team will get the job done right!

Call Guyon 027 622 8933

www.hummengineering.co.nz

GOLF CLUB

Ladies Golf 17 July

2nd Sarah Maw (stableford)

Sandra Marr 34, Bev Isherwood 34

Best Scores: Sandra Marr 104-29-75 C/B, Bev Isherwood 105-30-75

Aqua Japanese Restaurant Best Nett of the Day: Sandra Marr 75

Nearest the Pins

#6 Open Methven Foursquare Ruth Smith

#17 Open Methven Travel Sandra Marr

#4 Br B 2nd shot Methven Pharmacy Sandra Marr

#13 Open Arabica Sharon Burrell-Smith

#14 Sat Girls 2nd shot Supervalu Robyn Maw

#4 Sat Girls Cinema Paradiso Ellen Kemp

Twos and Nett Eagles: Bev Isherwood. Ellen Kemp.

Apologies to Fay Redfern who was the winner of the Bronze B last week with a net 75.

Men's Golf Results 22 July

With a small group playing (15) due to weather conditions we played a stableford round.

Winner was Athol McAlpine 40 pts

Alister Maxwell 39pts

Pete Wood 38pts

Frank Sandy's 37pts

Two's Frank Sandys, Piers Roulto

Next Saturday (27th) will be the Gerard Fitzgerald Memorial 4BBB which was to be played on the 20th.



Specialist Tractor/Machinery Operator

South Pacific Seeds seeks applications for the position of Tractor/Machinery Operator. The successful applicant would be responsible for drilling, transplanting, cultivation, row diving, combine harvesting and daily maintenance and minor repairs. Working with field reps and farmers, ensuring quality, reliable vegetable seed production for our many international markets.

We seek applications from suitably qualified persons to be part of the largest vegetable seed multiplier in Australasia.

- Two years previous experience (training will be provided)
- Farming background preferred
- Full Licence, Class 2 Drivers license preferred
- Able to work with a team and independently
- Administration and record keeping abilities
- Good communication skills
- General knowledge of Health and Safety

Applications must be in writing, providing a full work history and experience, with references to:

Lyn Markham
l.markham@spsnz.co.nz
South Pacific Seeds (NZ) Ltd
P.O. Box 113
Methven
Ph: 03 302 8115

Applications close 7 August 2019.

METHVEN NETBALL CLUB

SENIOR:

Methven Shearmac vs Ashburton College Yr10B WON 31-21

Methven Trucking vs Ashburton College U18A LOST 18-29 POD Jessie Eaton

Methven Clemens Seed Cleaning BYE

Methven Humm Engineering WON by default

JUNIOR:

Methven R&R Spreading A vs Ashburton Borough Red A WON 23-9 POD Ella Monk & Nikita Burton

Methven Molloy Agriculture vs St Josephs Celtic Gold LOST 16-19 POD Rose Dargue

Methven Mt Hutt Station vs Southern Hinds Seed Cleaning LOST 18-23

Methven Arabica vs Ashburton Borough Black B WON 18-11

Methven Paddock Vets vs St Josephs Celtic Blue WON 12-9 POD Keira Jenkins



23 Morgan Street, Methven

4 3 2

Substantial 4 bedroom home is really too good to pass by. 2 luxurious bathrooms + master/ensuite. Kitchen & dining that flows into sunny lounge. Rumpus room 2nd floor. Diesel fire, heat pump, open fire & some double glazing. Exterior plaster over bricks + cedar.

For Sale
\$699,000

View
by appointment



Margaret Feiss
021 751 009

rwashburton.co.nz/AHB22328

Mid Canterbury Real Estate Limited Licensed (REAA 2008)



19 Chapman Street, Methven

4 2 2

Modern 4 bedroom home on family size 1012m2 section. New kitchen that flows to living area plus separate family lounge with log burner. 2 bathrooms, master ensuite & WIR. Large laundry. Plenty of sheds & well fenced. This house has something for everyone.

For Sale
\$743,000

View
by appointment



Margaret Feiss
021 751 009

rwashburton.co.nz/AHB22382

Mid Canterbury Real Estate Limited Licensed (REAA 2008)



4 Shearer Place, Methven

4 2 2

4 bed suntrap home. Quiet cul-de-sac. Master WIR & ensuite. Kitchen with breakfast booth. Formal lounge with street view. Excellent heating & cooling, gas fire & two heat pumps. Well planted grounds. Double garage.

For Sale
\$559,000

View
by appointment



Shirley Fitzgerald
0272 201 528

rwashburton.co.nz/AHB22399

Mid Canterbury Real Estate Limited Licensed (REAA 2008)



50 Dolma Street, Methven

4 2 2

Tucked away is this delightful four bedroom home situated on 7261m2 section. Open plan kitchen, dining, living & study area heated by a log burner + heat pump. Separate hobby room. 2 bathroom (master ensuite). Internal access double garage. Perfect for a pony.

For Sale
\$768,000

View
by appointment



Margaret Feiss
021 751 009

rwashburton.co.nz/AHB22445

Mid Canterbury Real Estate Limited Licensed (REAA 2008)



80 Mt Hutt Station Road, Methven

8 Ha freehold block of bare land just outside of the town boundary. Proposed Opuke Thermal Pools & Spa is just 500 metres away. Fully fenced with 3 entrance ways & stock water 2 sides. Already in place at the boundary town water supply, power & phone line.

For Sale
\$875,000 + GST (if any)

View
by appointment



Shirley Fitzgerald
0272 201 528

rwashburton.co.nz/AHB22424

Mid Canterbury Real Estate Limited Licensed (REAA 2008)



20 Dolma Street, Methven

- 4226m2 section with title
- This is where town meets country
- Fully fenced
- Close to all schools
- Walking distance to town centre

For Sale
\$350,000

View
by appointment



Shirley Fitzgerald
0272 201 528

rwashburton.co.nz/AHB22450

Mid Canterbury Real Estate Limited Licensed (REAA 2008)



Thymestream, Mt Harding Road, Methven

- 16 prime 4,000+m2 rural residential lots
- Water, power and fibre to boundaries
- All lots fenced with sealed vehicle crossings
- Community walkway along stream edge & farmland

For Sale
1st release SOLD
2nd release lot 5
3rd release lots 9, 10

View
by appointment



Margaret Feiss
021 751 009

rwashburton.co.nz/AHB22028

Mid Canterbury Real Estate Limited Licensed (REAA 2008)



0 Barkers Road, Methven

Camrose Estates

Stage 1 - lot 8
Stage 2 - SOLD
Stage 3 - now selling (subject to title)

For Sale
Price On Application

View
by appointment



Margaret Feiss
021 751 009



Shirley Fitzgerald
0272 201 528

rwashburton.co.nz/AHB22363

Mid Canterbury Real Estate Limited Licensed (REAA 2008)



Principal: Jill Quaid
0274 376 755



Margaret Feiss
021 751 009



Shirley Fitzgerald
0272 201 528



Robyn Lilley
03 303 3032

36 McMillan Street, Methven 03 303 3032

rwashburton.co.nz