

The SNOWFED

For 35 years

Methven & Foothills Community Newspaper - Owned by Mount Hutt College

Taite 12 Akuhata 2021
Thursday 12 August 2021

Putanga 28
Issue 28



Kaleb and Ayla Beattie in their igloo at Alford Forest



Photo by Duane Schroeder

Over Methven



Penelope and Tyler, with Jeffery their snowman



Sophie Hart aged 2

Annie Jacobs

It's been a while since we've had a wee snowfall on the ground, but it is normal for our part of Mid Canterbury.

The only month in the last 100 years that there hasn't been snow on the ground in Methven, is February.

"Normal" usually means three or four skiffs (a light scraping of snow; 1-3cms), three or four dumps (10-15cms), and one or two good dumps (up to the height of a low windowsill, an adult's knees, or higher), per year. However, in the last 5 years, snowfalls on the ground in Methven have tended to be in Autumn or Spring.

The novelty factor is always there at the beginning. Then after three or four days of snow, mud, slush, ice, the constant drip, drip, dripping of thaw happening, trying to get ski and wet weather gear dry, the novelty starts to wear off. However, there is nothing quite like the fun of playing in snow!

In recent years, we have been so much more fortunate with less power cuts occurring. These are more likely to happen when

we have wet snow (with more moisture in it), than a drier snow (with less water in it). This is due to the weight of a wet snow pulling fuses off the power lines. Generally, the small towns and villages in Mid Canterbury fare quite well. It is rural areas which are more likely to have power cuts, and water issues if gravity feed or pumped water becomes frozen.

Regardless of where you live in Mid Canterbury, make sure your water pipes are well lagged, you have an alternate heat, cooking, and light source for if the power goes off. Windows need to be draught free and double glazed where possible. Thermally backed curtains help keep rooms warm as do draught excluders at the base of doors.

A kettle for the inevitable thaw-out cuppa and a casserole or pot of soup bubbling away on the back of the logburner is the ultimate nourishing, tummy-warming food in weather such as this!



Here when you need us...
Now servicing the Methven area
every Tuesday & Thursday

- Appliance repairs & services
- Air conditioning, heat pump & ventilation
- TV, AV & sound
- On farm & in home electrical

ElectraServe
MASTER ELECTRICIANS
50 YEARS TRUSTED SKILLED AND EXPERT ADVICE

03 308 9008 | service@electraserve.co.nz | www.electraserve.co.nz | 166 Moore Street, Ashburton



Alford Forest Alford Forest Settlement

For Sale offers invited over
\$450,000 + GST (if any)
Fee Ensor 021 705 014
fee.ensor@bayleys.co.nz
WHALAN AND PARTNERS LTD, BAYLEYS,
LICENSED UNDER THE REA ACT 2008

Create the epitome of country living

The opportunity exists to create the epitome of country living on this 8ha (subject to final survey) plot. An exciting development opportunity in a favoured setting of Alford Forest, just 15 minutes from Methven

bayleys.co.nz/5512327



Methven 143 Hobbs Road

4 2 3 4

For Sale offers invited over
\$799,000

Fee Ensor 021 705 014
fee.ensor@bayleys.co.nz
WHALAN AND PARTNERS LTD, BAYLEYS,
LICENSED UNDER THE REA ACT 2008

Outstanding location

This established 2,000sqm (more or less) property delivers lifestyle living within a tranquil rural backdrop. Magnificent mountain views and located just minutes from Methven.

bayleys.co.nz/5515216



Methven Methven Motels

Price by Negotiation
View by appointment
Fee Ensor 021 705 014
fee.ensor@bayleys.co.nz
WHALAN AND PARTNERS LTD, BAYLEYS,
LICENSED UNDER THE REA ACT 2008

Business to lease

Located in the heart of Methven, close to shops, restaurants, bars, and the hot pools development. With a 20 plus year lease this is a fantastic lifestyle and business opportunity.

bayleys.co.nz/5512441



Rakaia Gorge Lot 8 620 Coleridge Road

4 2 4 2

Price by Negotiation
View by appointment
Fee Ensor 021 705 014
fee.ensor@bayleys.co.nz
WHALAN AND PARTNERS LTD, BAYLEYS,
LICENSED UNDER THE REA ACT 2008

Luxury and privacy

Located near the Terrace Downs Golf Course with dramatic mountain views, this modern 314sqm home offers a luxury rural retreat on a one-hectare section.

bayleys.co.nz/5510044



Staveley 234 Flynns Road

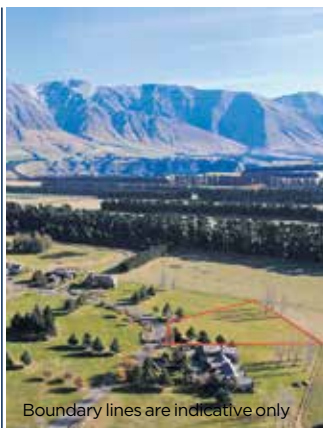
5 3 4 2

For Sale offers invited over
\$1,480,000
View by appointment
Fee Ensor 021 705 014
fee.ensor@bayleys.co.nz
WHALAN AND PARTNERS LTD, BAYLEYS,
LICENSED UNDER THE REA ACT 2008

Time for a change?

A luxury 461sqm homestead on 2.468ha in picturesque countryside with views of the Southern Alps and just 20 minutes from Methven.

bayleys.co.nz/5510565



Boundary lines are indicative only

Terrace Downs Lot 12 The Rowans

For Sale offers invited over
\$345,000

View by appointment
Fee Ensor 021 705 014
fee.ensor@bayleys.co.nz
WHALAN AND PARTNERS LTD, BAYLEYS,
LICENSED UNDER THE REA ACT 2008

High country section

Here is a wonderful opportunity to secure this premium 4,205sqm (more or less), well-sited section set amongst the stunning backdrop of Mt Hutt and the Canterbury Plains.

bayleys.co.nz/5514654



Terrace Downs Lot 10, 623 Coleridge Road

For Sale offers invited over
\$349,000
View by appointment
Fee Ensor 021 705 014
fee.ensor@bayleys.co.nz
WHALAN AND PARTNERS LTD, BAYLEYS,
LICENSED UNDER THE REA ACT 2008

Winning location

Located within the most magnificent rural setting, this 670sqm section delivers the most spectacular uninterrupted mountain views of Mt Hutt and surrounding ranges.

bayleys.co.nz/5515299



Windwhistle Lot 1-7, 9, 12-15 620 Coleridge Road

Price by Negotiation
View by appointment
Fee Ensor 021 705 014
fee.ensor@bayleys.co.nz
WHALAN AND PARTNERS LTD, BAYLEYS,
LICENSED UNDER THE REA ACT 2008

Build the dream

Secure a slice of this spectacular landscape and build the home you have dreamed of in the heart of nature's playground. Tui Estate residential development presents a unique opportunity to secure a 1-hectare section (more or less).

bayleys.co.nz/5510074

PUKA RATAKA (Diary)

COMMUNITY

TUESDAY

Mid Canterbury Connector from Methven / Mt Somers to Ashburton and return.
Book on 03 308 1395 ext 225

TUESDAY and FRIDAY

Methven Public Library 2pm-4pm
Methven Museum 2pm-4pm

WEDNESDAY

Methven Toy Library 10.30am-1pm
Busy Bees, Mt Hutt Elim Church 9-11am

SATURDAY

Methven Toy Library 9.30am-12noon
Methven Public Library 10-11am
AA Meeting Methven Primary School Library, 6pm

AUGUST

- 12 World Youth Day
- 20 Family Quiz Night, St John's Presbyterian Church, 7.30pm
- 21 Stand up Comedy, Arabica, 8pm
- 27 Cancer Society Daffodil Day
- 29 Lions Planting Day, 9.30am, Thymestream
- 30 Combined Choirs - Concert at Mount Hutt College time TBA

UPCOMING

- 5 September Fathers Day
- 9-11 September Snow White, Methven Theatre Company
- 25 September Miss Methven
- 27 Sept-2 Oct Bookarama
- 3 October Methven Mud and Steel
- 16 October Relay For Life, Ashburton Domain
- 31 October Methven Motor Show
- 24 November Opuke Time Showcase
- 27 November "The Exhibition" Methven Trotting Club

Snowfed contact details:

Advertising:

Go to our website:
www.snowfed.co.nz for sizes and prices



News and Articles:

Ph: Annie 302 8437 ext 3
E: letterbox@snowfed.co.nz

Accounts Enquiries:

Ph: Bethany 302 8437 ext 709
E: accounts@snowfed.co.nz

Disclaimer: The opinions, beliefs and viewpoints expressed by the various authors of Snowfed do not necessarily reflect the opinions, beliefs and viewpoints of Snowfed and Mount Hutt College.

All articles, photos and artwork produced by Snowfed remain property of Snowfed and may not be used in any other publication without consent from Annie Jacobs, Editor.

Isabella and Brielle McDonald
from Methven



Very successful -
Methven Craft Fair

Annie Jacobs

Ann Forbes from Malvern Hills and
Catherine Wright from Waddington



Heather Webb from Governor's Bay
and Barb Richards from Methven



Julie Donald and her absent friend,
Clare McDonald, enjoying their
gorgeous Devonshire teas.

St John's Presbyterian Church
Cnr South Belt & Jackson Street, Methven



Friday 20th August, 7.30pm

Teams of 5 or 6
Adults \$5, School children \$3
Questions for all of the family
No great prizes but great fun for all!
Supper provided

For further information contact
Joan Wright 302 8668 or Graham Marr 302 8682

Methven Summer School 2022

5-10 January 2022

OPEN FOR
ENROLMENTS
NOW!

Enrol online at:

www.methvensummerschool.co.nz



Methven
Summer School

FROM THE EDITOR (Mai i te Etita)

Annie Jacobs



It was fantastic to see so many great events on around Methven at the weekend.

Residents in the Foothills communities in Mid Canterbury are for the large part active, engaged in their community, and make things happen. The Mount Somers Walkway Society is busy with organising the new Sharplin Falls Walkway,

Staveley Ice Rink is undertaking a wonderful refrigeration project to enable us to use the rink for longer. There is a very busy skifield up on Opuke Mount Hutt. Opuke Thermal Pools and Spa is set to open soon. Bike Methven's trails on Opuke Mount Hutt just keep getting better and better! Long may this entrepreneurial spirit continue and develop.

Events such as the Methven Craft Fair run by Methven Playcentre, the market at Methven Resort last weekend, and White Out bring people from out of town to our area. Sporting fixtures bring families from out of town who post-game head out for a coffee or snack. This is great - it's bringing money into our town. We are spoilt for choice with cafes, restaurants and places to eat. There's a variety of pubs and bars. We have numerous accommodation options for all tastes and budgets with warm, affable, hosts and hostesses.

But it can be tough to be in business in a rural area. I want to say a big thanks to those who work so hard to give us all a local business to deal with - this saves us travelling to a bigger town. You have to be gutsy to be a business owner in a rural area. You need to be courageous, brave, and prepared to hang on. Thank you for employing people in our community. This in turn helps support schools, the Medical Centre, sports clubs and interest

groups. It means that we're not having to spend hours commuting to a place of work, so good for our well-being and the environment!

Thanks business owners; for the amazing amount of local support you give - I know that for many who have a shop front, you are approached daily to give sponsorship or monetary support to groups and clubs, for prizes at raffles and auctions. I know that our two local supermarkets are regularly approached by people (who get their groceries online from major supermarket chains, and don't shop at their local grocer); to give support to local groups. Our very generous and

kind supermarket owners graciously give that support - make sure you give yours back.

We need to continue to look after our local businesses - they look after us. Do check out the Ashburton District Council Business Awards and encourage our local businesses to enter - a small way you can say thanks for the amazing work they do. Nominations are open now and close on 30 November, 2021.

For further information, go to: **businessoftheyear.nz**

STOP BIRDS

leaves, snow and hail
from blocking up your spouting

Gumleaf Gutter Guard has been proven on thousands of homes across Australia and New Zealand over the last 12 years.

Quality materials: BHP Colourbond steel mesh with unique patented louvre which will even keep out pine needles. Will not rust or sag with age or load.

Colour matched to your existing roof colour and a 10 year warranty for total peace of mind

Call Rohan Rudd for a no-obligation assessment and quote anytime, any day except Sunday.

GumLeaf

0800 486 532
or 03 982 8850
www.gumleaf.co.nz



CARTER'S

As NZ's largest independent tyre dealer, we pride ourselves on providing unbiased, expert advice, products & service for all your needs:

- Car Tyres
- Truck Tyres
- Tractor Tyres
- Punctures
- Wheels
- Batteries
- Tyre Vulcanising
- On farm servicing

24HR CALLOUT

MID CANTERBURY

Chris Gottermeyer | 022 317 5025
9 Line Road, Methven

0800 4 CARTERS | www.carterstyres.co.nz



100% NEW ZEALAND
OWNED & OPERATED



New patients welcome



Dentistry on Parkside®

Open late nights and Saturday

Call (03) 308 7472

Book online:
www.dentistryonparkside.co.nz

80 Park Street Ashburton



Epic White Out!



St John workers, Nick Nelis and Fee Ensor



Annie Jacobs

Mt Somers Fields Final Stage



- Services - town water supply, electricity, fibre to net boundary
- 5,202m² to 6,506m²
- Titles expected Dec 2021
- Auction date:
On site, 10:30am
Saturday 4th September 2021

pb.co.nz/AL92689

Greg Jopson
027 447 4382
gregj@pb.co.nz

Property Brokers ^B



STAND-UP
Comedy Night!
SAT 21ST AUGUST
8PM • \$10
ARABICA METHVEN
TICKETS FROM ARABICA



Mount Hutt College Enrolment for 2022

Enrolment packs are available via contributing schools.
For out of zone applications, contact us to receive an enrolment package.

Enrolment for 2022 Closes: Friday 27 August 2021
Ballot Notification (Out of Zone): Wednesday 1 September 2021
New Entrant Family Meetings: October, November 2021
New Entrant Visit: Wednesday 17 November 2021
9:20-11AM



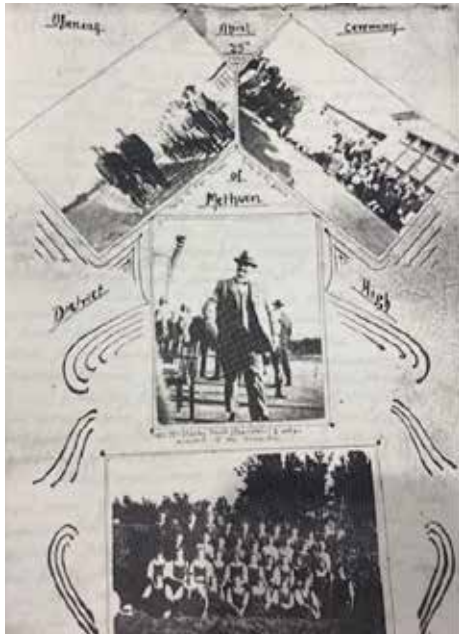
PRIDE



Tel 03 302 8437 email office@mthutt.school.nz
website www.mounthuttcollege.co.nz

Missed Our Open Day?

Mount Hutt College Centennial



Mount Hutt College is seeking interested people who would like to be involved with the 2025 Centennial.

It is planned that the Centennial celebrations will be held on or around 25th April 2025.

If this sounds like you then please get in touch by phoning the College Office 302 8437, or emailing:

office@mthutt.school.nz
with "2025 Centennial" in the subject line.



Restaurant & Bar is open

Any Size
Coffee **\$4**



Open Hours
Tue to Sat 2 PM - 8 PM

Call: 03-302 8724

www.methvenresort.com
51 Main Street, Methven

**SIMPLY
SPRAYING
LIMITED**



**SPRING IS
AROUND THE CORNER**

**CALL NOW TO DISCUSS
LIQUID FERTILISER**

WE CAN MIX, SUPPLY AND APPLY

- Liquid Nitrogen (18.0.0.0)
- Liquid Ammonium Sulphate (10.0.0.11)
- Chemical supply
- Chemical application
- 24m and 32m high clearance machines
- Full auto-steer & auto-section control
- Proof of placement
- Uniformity of spread pattern

Steve 027 321 6060 | steve@simplyspraying.co.nz | simplyspraying.co.nz



Steve Sim

Tommy Mijs

Your Local TV Experts

- Aerial / Dish installations and repairs
- Pre-wire of new homes
- TV wall mounting
- Commercial TV systems
- Home theatre installation

Discounts for:

Goldcard 10%

Grey Power 15%

Ashburton - Geraldine

Methven - Rakaia

and everywhere in between

ASHBURTON TV & AUDIO

Phone 308 7332 or 027 277 1062
ashburtontvandaudio.co.nz

METHVEN TYRE & HIRE



Passenger Tyres • Truck Tyres
Agricultural Tyres • Punctures and
Repairs • Wheels • Tyre Vulcanising

Hireage of equipment for Firewood,
Gardening, Transporting, Moving
House, Entertainment and
Functions!

**FULL RANGE OF ASHBURTON
U-HIRE EQUIPMENT AVAILABLE
THROUGH METHVEN TYRE & HIRE**

24 CALL OUT
SERVICE
HOUR AVAILABLE

03 302 8411
24 Methven
Chertsey Rd
METHVEN

NEUMANN TYRES



SPRING LYNNE MOTORCYCLES

Service and repairs of all makes and models
of motorcycle, ATV and Side by Sides.

Sales of used farm motorcycles, ATVs
and Side by Sides.

Ph 03 302 4939

1830 Methven Highway, RD6, Ashburton

Open Monday to Friday 8am -5pm



www.springlynnemotorcycles.co.nz

Drinking Water Public Notice Remember to Flush Your Taps

Some plumbing fittings have the potential for small traces of metals to accumulate in water that has been in the fitting for several hours.

Although the health risk is small, the Ministry of Health recommends you run a mugful of water through your drinking water tap each morning before use to remove any metals that may have dissolved from plumbing fittings.

We recommend this simple precaution for all households, including those on public and private water supplies.

Neil McCann

Group Manager Infrastructure Services



ashburtondc.govt.nz



Philip Wareing Ltd

Line Road, Methven

Phone 302 8616

Fax 302 9657

philipwareingltd@xtra.co.nz



- Lime & Super Spreading
 - Precision Nitrogen Sowing
 - Hay & Straw Cartage
 - Bulk Grain Storage
 - Agricultural Spraying
- Log Cartage
 - Stock Cartage
 - Container Cartage
 - Firewood Supplies
 - Shingle supplies
- Daily Freight
 - Swinglifting
 - Cool Storage
 - Silo Storage
 - Grain Cartage

Philip Wareing 027 433 4897
Simon Wareing 027 228 9448
Murray Lumsden 027 433 4538

Gary Sheridan 027 672 3995
Grant Kenny 027 414 2886
Ian McLean 027 433 4545

Mark Wareing 027 433 4539
Matthew Oates 027 433 4541
Dan Kennedy 027 432 0898

Peter Garde



Lions Walkway Update

Ron Smith has been very busy spreading shingle around the A & P block.

To date the track along Hydes boundary is completed and been fenced by Gavin Lill. All that is required now is a top course and rolled. The majority of shingle along Dave Grants boundary is on and Gavin has fenced the top two paddocks. Due to weather constraints we have not finished shingling on this track but given a weeks fine weather this will be finished (700 ton of shingle later).

We have since built two boardwalks on the A & P track. These cover the Dry creek overflow.

With this finished we will be moving onto repairing the Thymestream track.

We have had our ups and downs on the Mt Harding track with flooding happening for the third time. So far the plants have survived. We are currently setting out more planting areas on this part of the track.

Looking forward to a planting day on Sunday 29th August subject to weather.

The other bit of good news we received was a \$7000 grant from the Biodiversity fund from ADC. This will enable us to purchase more plants to extend our areas.

Thank you to all those members who have committed to being Friends of the Walkway. This has enabled us to keep Gavin Lill erecting the fencing, giving us a professional finish.

We leave this open to any member of the public or business community who wishes to join and contribute, please phone Bruce Sim 027 348 7484. Any donations will be acknowledged on an Honours Board at the beginning of the track.

Finally we wish to acknowledge all those members who have willingly given their time and machinery to facilitate this project. We see this as our generation's legacy to the Methven community.

Summer School would love your help

Cherie Irwin



The Methven Summer School has been running for nearly 30 years, and is always held from 5-10 January annually.

It was started by business people in the hospitality industry who wanted to help Methven attract more summer visitors. At the time there were grants available for adult continuing education from the government. Throughout the years many people have enjoyed learning new things and getting expert instruction in their areas of interest. The courses over the years have been wide and varied and included golf, fly fishing, bicycle repair, oil painting, short story writing, butchery, breadmaking, cheesemaking, jewellery making, pastel drawing, watercolours, sculpting, gardening, composting, cake decorating, sewing, just to name a few.

There are no longer any government grants available but despite that, the Methven Summer School is completely self-funding.

The Methven Summer School makes people happy! You only have to be there as a student or as a helper to understand that it is beneficial to the community. Everyone who participates seems to be enjoying the company of others while learning a new skill or improving their skills in whatever field they have chosen. Every year we have about 200 student participants from the

local community, or further afield. The Methven Summer School website went live for registrations on 4th August. This year our classes include Upholstery, Creative Collage, Chalk paint, Needle felting, Painting, Golf, Watercolour, Printmaking, Soap making, Basket making, and much more.

There are currently eight people on the committee (many who have contributed for a number of years) and we need some more help! We have 7-8 meetings per year, as we can skip monthly meetings now and then. We have a busy week from the 5-10th of January, helping out at Mt. Hutt College where Methven Summer School is held.

Most importantly, new people bring new ideas and we want to keep this Methven tradition going and growing, ever more vibrant and exciting. Can you help us?

Please call or text Cherie Irwin 027 495 3700 or email cherie@irwin.nz if you are interested in volunteering or if you would like to share your ideas with us: www.methvensummerschool.co.nz or Face book.

I.T. Question? Computer Issue?
THINK DCS – A.S.A.P



DYNAMIC COMPUTER SERVICES

- Local people and local support
- IT Services & Support
- Products and services without the confusing technobabble

CALL NOW: 03 307 8501

Member of BNI Ashburton

131 Alford Forest Road, Ashburton
E: info@dynamiccomputers.co.nz
Office Hours: 9:00am - 5:30pm

Snowfed Award assists sustainability study

Annie Jacobs

Head of Science at Mount Hutt College Sidinei Teixeira, is now studying for her Masters in Water Resource Management thanks to assistance from The Snowfed Study Award.

The Secondary School Study Award from the Ministry of Education gives four hours per week for Sidinei to pursue her studies. Alongside of that, Sidinei was the recipient of the Snowfed newspaper Study Award, which contributed \$2,500 towards her study fees.

Coming from Brazil, Sidinei knows about polluted water, and not having a good water supply. "Here in New Zealand, we are so lucky with the beautiful water that we have. But we need to look after it and protect it."

Sidinei shares what she learns with the students she teaches at Mount Hutt College because that assists them for the future.

"The more you know, the more you can prepare students for future sustainable thinking. What can we do as a person, a community, a country? The students are all prepared to learn those things. It's not just for them now, but for the future generations. It's teaching them to think about the future, - not just now, today and this week," she said.

The Ministry of Education is undertaking a review of how NCEA (National Certificate of Educational Achievement) Science is being taught.

"One of the things I am studying is Mātauranga Māori, which is the Māori perspective and views on the environment and management of our natural resources. It's not a new concept, but it is now recognised as being imperative to be taught. As a Science Teacher, I feel it is important to have the knowledge of Mātauranga Māori.

Previously, I was ignorant of the cultural guardianship that Māori hold dear. To be honest, I thought, "What would they know?" But they know so much. I have learned heaps from them, because they have been doing it well in New Zealand for over 40 generations.

Māori are not about 'owning the water', they are about us all using the water and protecting the water sustainably, not just for now, but for the future," said Sidinei. "As a Science Teacher, my goal and focus is to teach about sustainability."

Sidinei is a Community Member of the Water Zone Committee for Ashburton District. "I want to be helping the community. I didn't realise the extent and importance of the Water Zone Committee. It was not just a matter of being voted onto a committee. I applied. It was a very tough process. I had to do a presentation - mine was about collecting storm water (eg: rain off your house roof), and reducing the pollutants going into the rivers. It is not just the farmers who contribute to those pollutants, but householders in residential situations as well. Farmers are actually doing a lot to reduce contamination. I suggested that the Council could give a rebate if a ratepayer collects stormwater in this way."

I am happy for members of the public to approach me with recommendations, questions, and requests regarding water for our community. You can contact Sidinei on: teixeiras@mthutt.school.nz or write to Sidinei Teixeira, C/o Mount Hutt College, 44 Main Street, Methven.



- Ploughing
- Cultivation
- Grain Harvesting
- Windrowing
- Muck Spreading
- Cartage

- Direct & Conventional Drilling
- Fodder Beet Planting & Harvesting
- Maize Planting & Harvesting
- Forage Harvesting
- Baling Round & Square
- Supplementary Feed Sales

Fodder Beet Harvest is here . . .

CALL NOW

to arrange your
Fodder Beet harvest!

FEED FOR SALE

- Silage
- Straw
- Fodder Beet

CONTACT:

Phil (Managing Director)	027 699 0795	phil@maybrothers.co.nz
Tim (Sales)	027 323 4048	tim@maybrothers.co.nz
Ben (Baling, Chopping)	027 538 8336	ben@maybrothers.co.nz
Nick (Cultivation, Drilling)	027 538 8369	nick@maybrothers.co.nz

Office 03 307 8001

office@maybrothers.co.nz

www.maybrothers.co.nz

Rajah features again!

Book Review
by Jo Brennan

"Our Incredible Dogs - the stories behind the statues"

Author - Philippa Werry

This book published by New Holland and available through Whitcoulls is a simple, but very informative text covering assorted dogs that have been immortalised as statues, both here in New Zealand and overseas.

The coverage is thorough and includes photos, poems, quotes and the backstories of these amazing animals in their various categories eg. Farming dogs, Wartime dogs and even Earthquake dogs.

Reading through to page 53 under the heading of "Clever Dogs" you will find reference to our own Methven statue, Rajah the Wonder dog, and his owner, Constable Robbie Robertson. Photos of the statue and the plaque are included which you can see yourself outside the Methven Memorial Hall. There is a general run-down on the story of this amazing local canine plus some extra snippets of interest, such as the fact that Rajah had a missed opportunity of being chosen as a Hollywood star when Dr. Lewis came calling from Fox Films Hollywood. That would have really put Methven on the map!

On page 55, the author covers how statues can be created and again Rajah is mentioned in relation to how the sculptor, David Marshall crafted the statue we see today. The writing covers the process of how this statue came to be and the people involved, making the connections between individuals, Mount Hutt College and the wider community.



I found this to be an interesting read and a great book to gift to a younger reader with a passion around dogs or to anyone keen on the stories of man's best friends.

With it's local content this resource would also be a great book to have on the library shelf so take the time to locate a copy and delve into the world of canines.

Methven Panel and Paint



Methven Panel and Paint for all your Panel and Paint needs

Insurance Work - Truck Repairs and Repaints
Farm Machinery - Fleet Work
Caravans - Motorhomes
Windscreen Replacement - Chassis Straightening
Stone Chip Repairs - Rust Removal - Painting

Loan Cars available by arrangement

Tel: 03 303 3148
A/Hrs: Matt 027 711 7117
47 Line Road, Methven
Email: Methvenp.p@Xtra.co.nz



Computing Solutions

www.comsol.net.nz | 03 308 3400

Rural

Your Place or Ours

- ☒ Laptop repairs
- ☒ Desktop repairs
- ☒ Internet
- ☒ Email
- ☒ Data recovery
- ☒ Backup systems
- ☒ Laptop & phone screen repairs



We are in Methven regularly.
Call us today! ☎ 03 308 3400

Remote support | Competitive rates | Same day service*
Experienced, qualified technicians

*Same day service where possible

COMPUTERS

fixed fast the first time

Johnatello's Pizza is smokin' hot!

In a wonderful collaboration that utilises business space, Johnatello's Pizza Inferno and Café 131 have ventured into working together.

When Café 131 is finished for the day, Johnatello's Pizza moves in to use the space on Monday evenings. Last Monday, they saved the Methven public from making the journey to Mount Somers Village (where Johnatello's Pizza Inferno is based), and were open for takeaway business at Café 131.

The Snowfed did a story on Johnatello's Pizza Inferno on Thursday 22nd April, 2021, Issue 13. Johnatello's Pizza Inferno owner John Peneycad, explained that in the United Kingdom where he is from, wood-fired pizzas are a



Thomas Sears from Johnatello's hands Sommer O'Shea her wood-fired pizza

"huge thing," and with no one selling them here, he decided to start his own business doing just that.

I planned to go along, take photos, interview the team, and watch the smoking hot wood fired pizza oven at work. And I did! However, having never eaten a wood-fired pizza before, I ended up buying a delicious pizza for dinner.

Over 80 pizzas were being prepared for Methven's hungry tummies, and the service was slick and super efficient! The wood-fired oven gives such a scrummy flavour and is very fast – only taking one minute to cook each pizza! I opted for The Meathead, however there is a vegan pizza available and also a gluten-free base option, along with lots of choice toppings. Johnatello's use other tasty ingredients such as blue cheese, red wine, pastrami, and red onion too.

Pre-ordering is preferred - Facebook message Johnatello's Pizza Inferno, or phone or text 021 067 3981.

COVID Vaccine Update

The Ministry Of Health have increased COVID Vaccine supply and we will be increasing the number of vaccines we are delivering.

We are **not** on the national booking system, but will contact you about an appointment as we work down the age groups.

We have already invited patients aged 63 and over, and those with eligible medical conditions. We are not booking months in advance, instead we make appointments.

If you are aged 63 or over, or have an eligible medical condition, you can **text 021 954 617**, or email: **desk@MethvenMedical.co.nz** to request an appointment.

We are awaiting guidance on timing of the second vaccine.



We do Concrete!



Quality service EVERY time!

- Job done right first time!
- Paths, patios, driveways and more
- Repairs or new placements

Call now for an obligation free quote



Open weekdays 8am – 5pm
Ph Ben 027 458 2000
www.ktscontracting.co.nz



Methven Rugby Club

Open Grades Awards Evening

Saturday 14th August, 6 pm,
Methven Rugby Clubrooms

Everyone most welcome to
attend including all Sponsors,
Supporters and Parents.

Continuous finger food provided

The Married vs Singles match will
be played in
the afternoon
prior to the
awards,
starting at
2.30pm.



Does your car need some TLC?

Bring it to us, we can provide
all your mechanical services,
including tyres, WoF's
air conditioning repairs,
and maintenance services

Phone:
03 302 9077

Monday - Friday
8am to 5pm



Need firewood?

RK Firewood selling dry firewood
for this winter



Call Rini 027 451 7300

Grants and Funding

- Creative Communities Scheme
- Event, Biodiversity & Heritage Grants

Applications are now being invited from groups and organisations for the second round of Event, Biodiversity and Heritage grants from Ashburton District Council. We are also inviting applications for the Creative New Zealand 'Creative Communities Scheme funding' to go towards local arts and cultural projects in the Ashburton District.

Applications for all grants close at **5pm, Wednesday 1 September, 2021**. For further enquiries contact the Council on **307 9646** or email **grants@adc.govt.nz**

Application forms and full criteria for each scheme are available from the Council's website **ashburtondc.govt.nz** and from the Council office:

Ashburton District Council
5 Baring Square West
Ashburton 7740

Ashburton District
creativenz
COMMUNITIES



ashburtondc.govt.nz

Heat Pump Services

Here when you need us...

Now servicing the Methven area
every Tuesday & Thursday



Tony

ElectraServe 5G
MASTER ELECTRICIANS

03 308 9008 | service@electraserve.co.nz | www.electraserve.co.nz | 166 Moore Street, Ashburton



Along with securing a strong recovery, the Government's top priority remains protecting the country from COVID.

This means keeping the virus out of our communities, and rolling out safe, effective and free vaccines to everyone in New Zealand.

Many countries around the world are still reporting surges of new COVID cases, and it's clear that we're going to be living with the impact of this pandemic for some time. Our border measures and managed isolation and quarantine facilities continue to serve us well. But we all know we cannot afford to become complacent.

It's good to see people here in Mid Canterbury sticking to the basics. Little things like staying home when you're sick, practising good hygiene and keeping track of where you've been can make a big difference.

Just as last year our team of five million stayed home to save lives, this year the team is stepping up to be vaccinated.

The Government has secured enough Pfizer vaccine for the whole country, and our vaccine roll-out plan is helping us to reach the New Zealanders most at

risk first, before rolling it out to the wider population.

Locally, my offices are getting a lot of vaccination rollout related queries. In Mid Canterbury, over 7,000 doses have been administered.

Right here in Methven, over 1300 have been administered. The Canterbury District Health Board has ramped up its rollout – with four vaccination sites now opened in Ashburton, and a site in Methven also. Additional general practices and pharmacies in Ashburton have indicated interest and have started the process towards becoming clinics.

Because of the demand for vaccinations in Mid Canterbury, the CDHB is working with the District Council and local community and health providers to provide additional pop-up clinics.

Getting New Zealanders immunised is first and foremost about keeping you, your family and community safe. It also has economic benefits, allowing us to avoid costly lock-downs and to gradually

start reopening the border when it's safe to do so.

This is the biggest and most complex vaccination campaign New Zealand has ever run, and it is tracking well. There's an enormous amount of work going on to get everything lined up for this second half of the year.

People here in Mid Canterbury can expect to be offered vaccines by the year's end.

We're securing our recovery and there is plenty to look forward to.

Please feel free to contact me anytime:

jo.luxton@parliament.govt.nz

or my EA Jess:

jessica.hurst@parliament.govt.nz



6 - 12 August

Skyla Williams 6

Debbie Lamont

Hazel Love 5

Claire Munro 6

Becca Hyde 32

CONGRATULATIONS!

HAZEL LOVE

POP INTO METHVEN 4 SQUARE

SUPERMARKET FOR YOUR SURPRISE!

PRECISION SPRAYING UP TO 32M



HOUSEHAM MERLIN M4 32

- ✦ Ag Leader GPS
- ✦ AutoSteer
- ✦ 24m & 32m recirculating boom
- ✦ Air ride suspension
- ✦ Auto section control to minimise chemical wastage and double spraying
- ✦ Flotation and row crop tyres
- ✦ Adjustable hydraulic axles to match any tramline width

ISUZU SPRAY TRUCK

- ✦ 4wd
- ✦ Removable dual wheels for soft conditions
- ✦ ARAG GPS
- ✦ 24m recirculating boom
- ✦ Automatic section control

LIQUID UREA SUPPLIER

Think Hampton Spraying for all your spraying needs, phone James Hampton on 027 345 6077.

Hampton
Spraying

A/H: 03 302 1848

Fax: 03 302 1848

Email: hamptonspraying@gmail.com

1741 Back Track RD14 Rakaia



Diamond Painters and Decorators Ltd

Quality Interior and exterior painting and decorating

- ◆ Wall papering
- ◆ Water blasting
- ◆ Residential and small commercial
- ◆ Free no obligation quotes
- ◆ Airless spraying
- ◆ Roof painting

Duncan M: 027 370 2453 | H: 307 8243
E: diamondpaintersdecorators@gmail.com

Upcoming Events

Composting, Worm Farms and Bokashi Workshop: Thursday 19 August, 7pm-9pm. Register on Simply Eco's Facebook page or pop into their shop.

Jesus Christ Superstar: 30 August - 5 September. Ashburton Trust Event Centre.

Bite Night Culture Fest: Saturday 25 September, 5pm-8pm. EA Networks Centre, River Terrace, Ashburton.

Boulevard Day, Ashburton Domain: Free entry.

Plants 4 U @ Rakaia: St Andrew's Presbyterian Church Hall, Rakaia. Saturday 2 October, 9am-1pm.

Akaroa French Festival: 15-17 October

Methven Cricket Club AGM



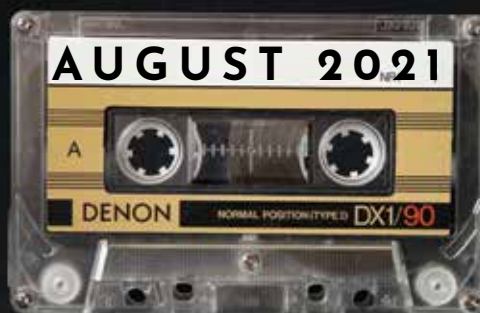
Wednesday 18 August, 7.30pm
at the United Clubrooms

All welcome

RSVP Jeremy Johnson 027 269 0400

the brown pub

eat local, drink local, meet locals



Friday 13.08 Monty Bevins
Friday 20.08 Karaoke night
Friday 27.08 Live Music

"Professional Earthmovers Shaping Your World"



**Safety. Environment. Partnership.
Innovation. Excellence.**



CORE SERVICES:

- DairyNZ accredited Effluent Pond Design and Construction
- Pond Construction and Irrigation Development
- Hedge and Stump Removal
- Farm Conversions
- Dairy Tracks - Lime or Gravel
- Pump Hire
- Wells and Galleries
- Bulk Earthworks
- Subdivisions
- Site Works
- Tree Shear
- Transportation



P: 03 308 0287 or 027 483 2712 | 192 Racecourse Rd, Ashburton
www.granthoodcontracting.co.nz

EXPLORING OUTSIDE

Mary Ralston

Kea were once a feature of the Mt Hutt car park where they were notorious for chewing the rubbery bits of windscreen wipers and roof racks. Their haunting call was often heard and seeing their cheeky antics was a bonus after a day of skiing.

But they've all but disappeared, probably because predators have eaten the adults, chicks or eggs. Keas nest in hollows on the ground so are very vulnerable to predation.

Stoats are probably the main culprits, but new video footage shows that possums also predate keas. In an area on the West Coast where 11 nests were monitored by camera, two were visited by stoats and the chicks taken. In one, a possum pulled a juvenile kea out to the entrance of its nest and ate it in front of the camera.

So we can't think of possums as just vegetation eaters, which is a massive problem in itself. Their ability to turn into bird-hunters makes it even more important that they are controlled in our local forests where we have many special native birds, including kea.

Possums have other characteristics that can be used to our advantage in a pest control effort. They don't like getting wet, so they may go hungry and stay curled up during a spell of wet weather, meaning that they may be out feeding and visible

on clear nights following wet ones. Possum control on these nights may yield good results.



They also don't like to cross rivers, which means reinvasion from across a river is less likely. This characteristic has been used to advantage in the Zero Invasive Predator (ZIP) programme in the Perth River valley

on the West Coast: intensive pest control has achieved a very low level of possums and there is hopefully little reinvasion across rivers or over mountain tops.

Possums are curious, they like sweet things, and are attracted to bright colours. These characteristics are useful to know when trapping – a lure made of flour, icing sugar and oil can be smeared on a tree to attract possums to the area. Commercial formulations are also available which may be more water-proof. The smell and whiteness attracts them to the area where a trap can be set.

NEEDING TO BUY OR SELL SUPPLEMENTARY FEED?

We trade all types of animal feed
and manure products.



Bruce Lilley
Sales Representative
027 55 33 085
bruce@jacksonholmes.co.nz



Peter Gilmore
Sales Representative
027 522 3855
peter@jacksonholmes.co.nz



SILAGE

Grass, Lucerne, Maize, Cereal Silage - Standing Crops -
Baled - Chopped - Balage Supply



STRAW/HAY

Rye Grass, Barley, Wheat, Oat, Cocksfoot, Fescue, Prairie
Grass, Brome, Linseed, Pea Straw - All Types of Hay



WINTER FEED

Fodder Beet, Swedes, Kale, Rape, Greenfeed Oats - All
Types of Winter Feed for Grazing



GRAIN

Barley, Wheat, Oats - All Types of Feed Grain



MANURE

Compost, Pig Manure, all types of Organic Manure
available for promoting Soil Health



Whether you are a BUYER or a GROWER, give us a call.
We would love to discuss your requirements.

03 303 0872

Visit: jacksonholmes.co.nz

[@JacksonHolmesContracting](https://www.facebook.com/JacksonHolmesContracting)



jacksonholmes

contracting & supplementary feed

THE ALPINE GRIND

Weekly Community Heroes

Anna Johnston

Sandy Redmond

Jim, the School Bus Driver

Jan Dynes

Richard Owen

The Winner is

Jim, the School Bus Driver

**Pop into The Alpine Grind to
receive your free coffee**

If you know a local hero, head in
to The Alpine Grind to nominate
them.

Great Space

Storage

**Clean, Dry Containers
& Sheds from
\$120 per Month**

9/11 Line Road, Methven
Ph 0274 766 835 anytime

METHVEN FOOTBALL CLUB

John Peneycad

Wai Mak? because I needed a cheesy headline

Waimak Utd 0 v Methven FC 3

Methven continued their dogged pursuit of the league title and could have scored straight from the kick off, catching the home side sleeping with a beautiful move straight off the training ground, which ended in disappointment, failing to convert the chance.

It only took a few more minutes until the visitors were 1 up, after a rout one kick from keeper James Wasley was met by Rory Lawn who expertly flicked the ball into the path of goal machine Colin Cameron. The Scot wrong footed the defender before unleashing a devastating strike across the keeper into the left corner, 0-1.

The Mountaineers proceeded to dictate the play from there on, first to every ball and manipulating the tempo. Cameron was ever the threat, and the defence couldn't handle him, but unfortunately, he squandered a few chances, which on another day would have easily found the back of the net. He did however win his side a penalty, midway through the first half, twisting and turning the defenders

inside and out before being hacked down. Jan Luccini stepped up and made it 0-2 from the spot. Cameron was involved again when he threaded the ball into a dangerous area behind the Waimak defence, which Lawn grazed across the pitch to latch onto. The Irishman was amongst the goals again this week with his first touch taking the ball away from the defender before wrapping his unfavoured left foot around the ball to send it into the bottom corner, 0-3.

The second half showed a different Methven to what we have become accustomed to this season - a disciplined and often pragmatic approach to the match, no need to be chasing the game but equally in search of a much needed clean sheet too. The Mountaineers still had their chances but were unable to increase their goal difference further. Waimak were left frustrated, shouting at themselves at times; clearly disturbed by how little they had created throughout the match, but it was Methven who had not allowed them a sniff. The home side would finish the game with 10 men as the frustration reached boiling point and the striker was shown red for dissent towards the referee.

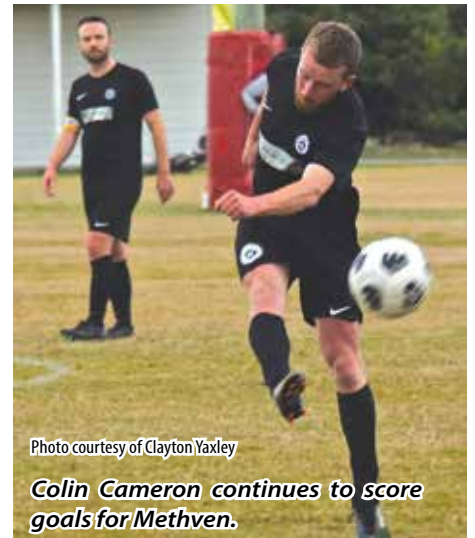


Photo courtesy of Clayton Yaxley

Colin Cameron continues to score goals for Methven.

Another fantastic victory for the Mountaineers and with only three matches remaining in the season. Their destiny is in their hands. Win the remaining fixtures and they will be crowned champions, seems simple but it's anything but. Up next is the UCAFC Gators for Methven's final home game of the campaign, 2:30pm kick off at the domain on Saturday and hopefully a huge turnout from the locals to cheer the boys over the line.

SEPTIC TANKS

BLOCKED DRAINS

FARM EFFLUENT

CCTV CAMERA

An advertisement for Allen's Ashburton Liquid Waste Disposal. The image shows two white trucks parked on a grassy field. The truck on the left is an Isuzu with a large blue tank on its back, featuring the 'Allen's Ashburton' logo and 'LIQUID WASTE DISPOSAL' text. The truck on the right is a smaller white truck with a blue tank and the same branding. The background is a clear blue sky and green grass.

LIQUID WASTE DISPOSAL

• Phone: 3085293 - 0274333563 •

MPS Snowsports



Year 4, 5 and 6 students at Methven Primary are fortunate to have the opportunity to participate in a Snowsports programme at Mt Hutt.

Each Friday for six weeks a group of around 70 students, 4 teachers and many parent helpers ski or snowboard. In the morning the students ski in their groups with a parent or teacher. After completing several runs, and having a lot of fun, it's time for a lunch break to refuel tired bodies. After lunch students attend a one-and-a-half-hour lesson with Mt Hutt instructors to learn new skills before returning to school with plenty of stories to share.

Participants in the Snowsport Option are crossing their fingers for some blue sky, sunny days, after the first Friday was a little windy, and the second there was low visibility! A big thank you to all the parent helpers who give up their time to support our students, we would not be able to run this programme without their support.

A massive thank you goes to Mt Hutt who offer this opportunity and to Mrs Warburton at school for all her organisation.

Action at Methven Rugby Club on Saturday

Annie Jacobs



Ellesmere against Mid Canterbury Seniors

EMPLOYMENT

Employment Opportunities

We are seeking people to join our team for our upcoming season to work within our Field Department and Seed Cleaning Operations.

No experience is required as we will provide full training, so if you are hard working, enjoy working outdoors, have a great sense of pride in what you do, and like being part of a focused team, we would love to hear from you.

We will be offering fixed term positions for the following:

Field Assistants

- Working as part of our Transplanting & Roguing crew from mid September to mid-late October
- Transport to crop site locations across Canterbury is provided, leaving from our Methven base daily

Seed Cleaning Plant Operators

- Based in our Seed Cleaning Plant in Methven
- Prior experience operating plant/machinery would be an advantage, however full training will be provided
- Your attention to detail and producing outputs to a high standard is essential
- You would need to be available from mid January through to June 2022

South Pacific Seeds (NZ) Limited has been leading New Zealand's hybrid vegetable seed production for over 25 years, and we strive to continually improve and produce high quality product to the elite hybrid vegetable seed markets of the world. We can only do this with a great team, so if you think you would like to join us, we would welcome hearing from you.

Check out our website southpacificseeds.co.nz to learn more about us and our staff.

We will be offering a competitive hourly rate, supportive team environment, full training, and a variety of work opportunities all based from our Methven site.

Applicants must be New Zealand residents, or have the legal right to work in New Zealand.



For further details please contact our Human Resources Manager, Sue van den Heuvel by emailing: s.vandenheuvel@spsnz.co.nz or call for a chat 03 302 8115.

GOLF CLUB

Mens Results 24th July

Senior Craig Middleton 79-8-71 by lot.
Intermediate: Frank Sandys 79-11-68.
Junior A Max Ferris 87-16-71. **Junior B** Allan Lock 98-28-70.

Other good scores 71 Jimmy Anderson, Steve Schwass. 72 Paddy Helmore, 73 Frikkie Greybie, Bruce Dickson.

Two's Grant Hargreaves x2, Keith Middleton, Matt Duncan, Pete Wood, Piers Rolton.

Closest to the Pins: *Aqua Japanese No4* Michael Kemp. *Hunters Wine No6* Paddy

CLASSIFIEDS

ARE you sick of the slow engine response from your diesel ute? Consider fitting an S-DRIVE. Big performance gains for low cost. See Andrew at Methven Motors or phone 03 302 8201

FIREWOOD & Treework. Tree removal, call RK Firewood. Top money paid for big large trees. Call Rini 027 451 7300

CHIM Chim Chimney Sweeps-We'll sweep your logburner's flue, check firebricks, baffles, airtubes & controls. We're experts on coal-ranges, and can sweep any sized open fire. We quote & undertake repairs, flue extensions & install bird netting. 0800 224 464 www.chimchim.nz

GRAZING wanted - all feed types considered. Call Steve on 027 321 6060

JUNKO Acupuncture ACC treatment provider. For booking and enquiries, phone 03 302 8888 or text 021 434 603

FOR a wealth of Freemason information and local history: www.methvenlodge51.org

BATTERY Problems? Come talk to your friendly Auto Electricians at Methven Motors for a FREE Battery test. Tel 302 8201 ext 2

Helmore, *Ski Time No13* Craig Middleton, *Brown Pub No14* Steve Schwass, *Green Parrot No17* Grant Hargreaves.

Dubliner Best Nett Frank Sandys 68. **Methven Foursquare Second Best** Nett Allan Lock 70. **Bar Voucher Best Gross** Steve Schwass.

Ladies Results 4th August

LGU

Silver Sara Gallagher 82-11-71. Gayle O'Duffy 86-14-72.

Bronze A Robyn Maw 87-20-67, Jane Helmore 98-25-73, Denise Dixey 98-25-73. **Bronze B** Heather Santy 107-28-79, Denise Hood 113-33-80, *Aqua Japanese Restaurant Best Nett of the Day* Robyn Maw 67.

Nearest the Pins: *No4 Open Methven Travel* Jane Helmore, *No6 Primo* Robyn

Maw, *No13 Open & Bronze B 2nd shot* *Methven Foursquare* Nola Hydes.

No17 Open Methven Pharmacy Robyn Maw, **No 14 Silver & Bronze A Supervalu** Gayle O'Duffy.

Twos and Nett Eagles Heather Santy, Wendy Wareing, Denise Hood, Sara Gallagher.

BRIDGE

North / South

Willie Ensor / Mary Stone 57.50%

Colin Clemens / Janet Cuttle 42.50%

East / West

John Barwell / Adrienne Goodwin 57.50%

Jennifer Hooke / Flora Lowe 42.50%



Mt Arrowsmith Station

www.arrowsmithlodge.co.nz

We are looking for a person or couple to help run our lodge and private campground and there could be some light farm duties.

Duties Include:

Lodge Bookings	Cleaning Lodge
Lawn Mowing	Gardening
Camp Ground Maintenance	

Training will be available
Email: philip@philipwareing.co.nz

Office Cleaner required

2 - 3 hours during weekend

Phone 302 9656



CASUAL • PART TIME • FULL TIME

Day shifts / night shifts & weekend work to suit you!

Forklift Operators & Manufacturing positions

0800 AGSTAFF

agstaff.co.nz

jobs@agstaff.co.nz

COME JOIN THE TEAM!

We have Seasonal Operator jobs available.
from September/October 2021
until March/April 2022

Experience an advantage but not essential for all positions. We provide thorough training to all new staff.



If you are interested in working for us or want to know more, please email: todd@jacksonholmes.co.nz or apply online at www.jacksonholmes.co.nz/workforus.

Immigration NZ Accredited Employer

 **jacksonholmes**



Methven and Surrounds

BAYLEYS



Methven 191 Main Street

7 2 3

For Sale offers invited over \$668,000

Rosa Dekker 0274 655 387

rosa.dekker@bayleys.co.nz

WHALAN AND PARTNERS LTD, BAYLEYS,
LICENSED UNDER THE REA ACT 2008

Investors - act now!

Multiple options - two properties on one title. The downstairs property offers three bedrooms and two renovated bathrooms, upstairs has four bedrooms and one bathroom.

bayleys.co.nz/5514499



Methven 25 Lochhead Crescent

4 1 2 2

Price by Negotiation

View by appointment

Rosa Dekker 0274 655 387

rosa.dekker@bayleys.co.nz

WHALAN AND PARTNERS LTD, BAYLEYS,
LICENSED UNDER THE REA ACT 2008

The perfect family home

Privately positioned on a 920sqm site on sought-after Lochhead Crescent - this large-scale family home can effortlessly meet the demands of modern living.

bayleys.co.nz/5515820



Mt Somers 55B Mt Jollie Street

3 1 1

Price by Negotiation

View by appointment

Maree Firth 027 542 1364

maree.firth@bayleys.co.nz

WHALAN AND PARTNERS LTD, BAYLEYS,
LICENSED UNDER THE REA ACT 2008

Owner wants sold

Start your family tradition at Lake Clearwater! This fantastic three bedroom bach plus a converted caravan has space for all the family.

bayleys.co.nz/5514126



Windwhistle 2/46 Zig Zag Road

1 1 1

Price by Negotiation

View by appointment

Maree Firth 027 542 1364

maree.firth@bayleys.co.nz

WHALAN AND PARTNERS LTD, BAYLEYS,
LICENSED UNDER THE REA ACT 2008

Welcome to paradise

Here is your chance to own this slice of paradise with a million-dollar upper-floor view. This retro style, top floor one-bedroom alpine chalet is part of Mt Hutt Lodge complex.

bayleys.co.nz/5515719



Looking to rent your investment property?

Talk to us.

At Bayleys Property Management Mid Canterbury we are committed to you every step of the way when it comes to managing your investments. Our highly trained Property Manager is focused on offering personalised and exceptional service to our owners and tenants.

When it comes to managing your property portfolio, nothing is more powerful than experience.

03 303 3093

methvenrentals@bayleys.co.nz

WHALAN AND PARTNERS LTD, BAYLEYS, LICENSED UNDER THE REA ACT 2008

BAYLEYS

ALTOGETHER BETTER

NEW LISTING



Windwhistle Tussock Lane, Terrace Downs

Slice of paradise

Offering Lots 33 and 34 on Tussock Lane, a quiet, peaceful, and private part of the Terrace Downs Resort, with incredible mountain views, and the bonus of mature trees surrounding the property for shelter.

Power, water and septic are to the boundary.

bayleys.co.nz/5515914

Price by Negotiation

View by appointment

Mike Preston 027 430 7041

mike.preston@bayleys.co.nz

Simon Sharpin 027 631 8087

simon.sharpin@bayleys.co.nz

WHALAN AND PARTNERS LTD, BAYLEYS,
LICENSED UNDER THE REA ACT 2008



4 Blackford Street, **Methven**

7 3.5 3

Package Deal Buy One And Get Two

Main Home - five bedrooms, large living area and modern kitchen, 2.5 bathrooms, double attached garage.
Second Home - two bedrooms, one bathroom, open plan living, separate laundry, single attached garage.
Both houses have separate services. Sits on 1012m2 section just minutes from town.

Rental Appraisal \$900 - \$1000 per week being \$46,000 - \$52,000 PER ANNUM. Rental appraisal available.

rwashburton.co.nz/AHB22671

Real Estate Mid Canterbury Property Limited Licensed (REAA 2008)

For Sale
\$980,000



Shirley Fitzgerald
0272 201 528

View
by appointment



10 Lakeside Drive, Terrace Downs, **Windwhistle**

- 670m2 sunny north facing section with majestic views straight to the Southern Alps
- Fully serviced
- Shelter belt of trees on adjacent land to the south
- Section over looking small picturesque lake

Terrace Downs is an 18 hole Golf Resort that sits on the banks of the Rakaia River with chalets, villas and a steady growth of very attractive private residences. Spectacular Resort building.
One hour easy drive from Christchurch and 20 minutes from Methven.

rwashburton.co.nz/AHB22519

Real Estate Mid Canterbury Property Limited Licensed (REAA 2008)

For Sale
\$349,000



Margaret Feiss
021 751 009

View
by appointment



What Our Clients Are Saying

Margaret is personable and not pushy. She cares for her clients and also her customers. She is kind, respectful and understanding. We consider Margaret to be an expert in her field. She lives in the community and has worked in it for a long time. She takes time to know the market with its ebbs and flows. We would recommend anyone to Margaret more so to Ray White. D and T

'Shirley is so easy to work with. She's very helpful - nothing is a bother. She's been in the area all her life like us, and she does her research too, so she really knows what she's doing. We have sold three houses with Shirley, and we are in the process of buying a section with her at the moment.' Pat and John

rwashburton.co.nz

Real Estate Mid Canterbury Property Limited Licensed (REAA 2008)



Business Owner:
Kim Miller
027 236 8627



Margaret Feiss
Licensee Salesperson
021 751 009



Shirley Fitzgerald
Licensee Salesperson
0272 201 528



Robyn Lilley
Administration
03 303 3032



Juliette Smyth
Admin Support
03 303 3032

36 McMillan Street, Methven 03 303 3032

rwashburton.co.nz