

# SNOWFED



For 37  
years

Methven & Foothills Newspaper - owned by Mount Hutt College

Rāpare 19 Oketopa 2023  
Thursday 19th October 2023

Putanga 38  
Issue 38

Annie Jacobs

## Dan and Ben

- best of friends!



If you happen to go down a quiet shingle road on the outskirts of Methven, it is not at all unusual to see stock grazing contentedly in a paddock.

But what might be surprising is the size of a very large steer happily grazing with his mate Dan nearby.

Years ago, it was not unusual for children to ride a cow or steer to school, but to have cattle that are so friendly now, is quite unusual.

Dan and Ben are best of friends and clearly think a lot of each other!

*continues on page 7*



### Philip Wareing Ltd

48 Years of spraying experience  
covering over a million hectares!

ph Paul Connell 027 224 5036 or Wareings office 302 8616



# BAYLEYS

# Methven and Surrounds

## OPEN HOME



### Methven 5 Arrowsmith Drive

4 2 2 2

**Asking Price** \$829,000

**View** Sat 10.30-11am  
& Wed 5.15-5.45pm  
or by appointment

**Fee Ensor** 021 705 014  
fee.ensor@bayleys.co.nz

**WHALAN AND PARTNERS LTD, BAYLEYS,  
LICENSED UNDER THE REA ACT 2008**

#### Brand new and ready

Prime positioning in Camrose Estate,  
and is ready to move into. Within  
walking distance to the town centre.

bayleys.co.nz/5521064



### Staveley 137 Sawmill Road

4 2 2 2

**For Sale offers invited over**  
\$1,760,000

**View** by appointment

**Fee Ensor** 021 705 014

fee.ensor@bayleys.co.nz

**Liv Gorman** 027 856 4416

liv.gorman@bayleys.co.nz

**WHALAN AND PARTNERS LTD, BAYLEYS,  
LICENSED UNDER THE REA ACT 2008**

#### Countryside retreat

This two-level home sprawls over 3.7  
ha (more or less) of countryside.

bayleys.co.nz/5521636



Artist's impression



Artist's impression

### Methven 12 Arrowsmith Drive

3 2 2 2

**For Sale offers invited over**  
\$879,000

**View** by appointment

**Fee Ensor** 021 705 014

fee.ensor@bayleys.co.nz

**WHALAN AND PARTNERS LTD, BAYLEYS,  
LICENSED UNDER THE REA ACT 2008**

#### Build your dream home

Introducing a magnificent  
opportunity to own a custom-  
designed house and land package in  
the desirable Camrose Estate.

bayleys.co.nz/5521463



Boundary lines are indicative only



### Methven 11 Arrowsmith Drive

780sqm

**Asking Price** \$187,000

**View** by appointment

**Fee Ensor** 021 705 014

fee.ensor@bayleys.co.nz

**WHALAN AND PARTNERS LTD, BAYLEYS,  
LICENSED UNDER THE REA ACT 2008**

#### Look no further

Looking for a prime location to build  
your dream home or land bank?  
Look no further than this 780sqm  
(more or less) section situated in  
stage eight of Camrose Estate.

bayleys.co.nz/5521129



### Mt Somers Ashburton Gorge Road

17.53ha

**Asking Price**

\$490,000 + GST (if any)

**View** by appointment

**Fee Ensor** 021 705 014

fee.ensor@bayleys.co.nz

**WHALAN AND PARTNERS LTD, BAYLEYS,  
LICENSED UNDER THE REA ACT 2008**

#### Your own piece of paradise

Nestled up the back of Mt Somers,  
this 17.53ha (more or less) bare land  
block is the gateway to the Hakatere  
Conservation Park.

bayleys.co.nz/5521168

## UNDER CONTRACT



### Methven 138 Mount Hutt Station Rd

3 2 2 3

**Price by Negotiation**

**View** by appointment

**Fee Ensor** 021 705 014

fee.ensor@bayleys.co.nz

**Liv Gorman** 027 856 4416

liv.gorman@bayleys.co.nz

**WHALAN AND PARTNERS LTD, BAYLEYS,  
LICENSED UNDER THE REA ACT 2008**

#### Luxury, space and charm

Executive home with rural charm.

bayleys.co.nz/5521537



# THINKING OF SELLING?

## Finding buyers others can't

Fee Ensor has built her career around first-class marketing  
and negotiation skills, exceptional communication, and a  
sense of energy and enthusiasm which is truly infectious!  
The result is a truly outstanding track record, an array of  
awards, and a reputation as the leading property expert  
across Methven and Mid Canterbury.

**For an agent with a national footprint and local  
connections who'll be as passionate about your home  
as you are, contact Fee.**

#### Fee Ensor

021 705 014 | fee.ensor@bayleys.co.nz

**WHALAN AND PARTNERS LTD, BAYLEYS, LICENSED UNDER THE REA ACT 2008**

# BAYLEYS

ALTOGETHER BETTER

Residential / Commercial / Rural / Property Services

# PUKA RATAKA Daily Diary

This space is available for events that are advertised in Snowfed - to advertise, see below.

## OCTOBER

19 Methven Vintage Club AGM, 7.30pm

21-23 Millichamps Nursery open 10am-4.30pm

23 Labour Day

23 Spring Fair, Hororata Domain, 9.30am

24 Steady As You Go, All Saints, 10.30am

27 A&P Scholarship Applications close

25 Draft Alcohol Submissions close

27-29 Staveley Camp Forest Weed Weekend

27 - 1 Nov Grandparents Week

31 AACF Scholarship Applications close

## NOVEMBER

7 Methven Netball Club AGM, 7pm

11 Paddy's Market, 10am, Showgrounds

17 Canterbury Show Weekend

25 Community Possum Trap Library Launch

28 Matt Chisholm Time Out Tour

## COMMUNITY

**SCRAP METAL DROP OFF** opposite the Police Station

### ON DEMAND

**Mid Canterbury Connector** from Methven / Mt Somers to Ashburton and return. Book 2 days ahead 03 928 8164

### TUESDAY and FRIDAY

**Methven Toy Library** 9-10.30am

**Methven Public Library** 2pm-4pm

**Methven Museum** 2pm-4pm

### WEDNESDAY

**Methven Green Waste** drop off, Vaughans Rd, 12.30pm-2.30pm

### SATURDAY

**Methven Toy Library** 9-10.30am

**Methven Public Library** 10-11am

**AA Meeting** All Saints Church, 6pm

### SUNDAY

**Methven Green Waste** drop off, Vaughans Rd, 12pm-4pm

### Snowfed contact details:

#### Advertising:

Go to our website:  
**www.snowfed.co.nz/Advertising Rates**

for specs, sizes and prices

#### News and Articles:

Phone: Annie 302 8437 ext 3  
Email: letterbox@snowfed.co.nz

#### Accounts Enquiries:

Phone: Bethany 302 8437 ext 709  
Email: accounts@snowfed.co.nz

Disclaimer: The opinions, beliefs and viewpoints expressed by the various authors of Snowfed do not necessarily reflect the opinions, beliefs and viewpoints of Snowfed and Mount Hutt College.

All articles, photos and artwork produced by Snowfed remain property of Snowfed and may not be used in any other publication without consent from Annie Jacobs, Editor.



# Thanks Methven Lions!

*Katelyn Lill enjoying herskiing, thanks to Methven Lions*

*This winter I got a scholarship to do Mountain Sliders from the Methven Lions.*

My goal when I applied for the scholarship was to get more confident up the summit and learn to use my poles. I made so much progress, I went from level 3/4 to level 5/6. I learnt how to pole touch, hockey stop, how to do flat land 180's and much more.

I also did lots of new runs including Fascination, Wiley's Way, Lexis Way,

Exhibition Bowl and more. My instructor Sophia taught us how to do jumps!

Thanks to the Methven Lions and Mount Hutt Ski field.

Special thanks to Sophia and Frank.

*Written by Katelyn Lill*



## Need a hot meal?

### Meals on Wheels

Methven House provides freshly cooked hot dinner meals at midday for those that find it difficult to prepare.

Subsidised (through your doctor) at \$8.50 or non-subsidised at \$13. Meals include hot meat with seasonal vegetables and a dessert.

Delivery is included within the township at 12noon Monday-Friday.



**To book, phone Methven House**  
**Phone 302 8528**

## Methven Lions

# Reminder

Have you got any glasses that you no longer need?



Are they in good useable condition?

Please drop them to Methven Hammer Hardware or Methven Pharmacy for donation to the Fred Hollows Foundation (supporting those in need in the Pacific Islands).





# **Mt Hutt** **Pass**

**SALE ENDS**  
**31 OCT**  
\$50 now, pay  
the rest in 2024\*



**Mt Hutt**  
canterbury new zealand





# Methven Lions launch "The Birdsong Initiative"

*At a recent meeting, Methven Lions were talking about how you don't seem to hear so much birdsong these days and feel this is a great pity.*

To cut a long story short, Methven Lions have decided to do something about it and "The Birdsong Initiative" was hatched.

The dream is to bring back birdsong.

The Initiative is designed to find out the extent of the issue and to gauge what sort of response might be helpful and then for Lions to work out how they can help that response.

Methven Lions see their role as facilitating and enabling a response by the Community.

**They have identified two areas of interest:**

- the Foothills
- Methven township

At this early stage, they think the foothills and township are separate issues and though there is some overlap, they'll require different solutions.

**There are two main strands to each conversation:**

- creating or reinstating habitats
- protecting species within those habitats

This will involve pest and predator control.

The first aim is to gauge community interest and likely engagement in the idea of bringing back birdsong.

***Methven Lions think it can become a heritage project and see their role as facilitating and enabling this to happen.***

It simply cannot happen without community participation.

Lions Project Lead, Mac McElwain said, "We need to find out who's interested in participating and we'll soon be launching ways to make this happen."

The second aim is to gauge the extent of



the issue with data and science and then to plan a response.

"We're excited by the Birdsong Initiative. Bringing back birdsong is a worthy objective and it just feels like the right thing to do," Mac said.

Methven Lions think it can become a heritage project and see their role as facilitating and enabling this to happen.

"Unless we can get the support and participation of the Community it can't happen," said Mac, "let's find out."

Further information will appear nearer the end of the week on the Methven Noticeboard page on Facebook.

## Residential Electrical

Servicing the Methven area every Thursday  
and on demand.



**CALL TODAY**  
**308 9008**

[service@electraserve.co.nz](mailto:service@electraserve.co.nz)



**ElectraServe**  
✓ MASTER ELECTRICIANS

166 Moore St, Ashburton | [www.electraserve.co.nz](http://www.electraserve.co.nz)



**Rural | Commercial**  
**Residential | Solar**

**Service Area**

Mid & South Canterbury

**Contact**

027 625 9255

[trav@traviselectrical.co.nz](mailto:trav@traviselectrical.co.nz)



## NEW LISTING

**METHVEN** 59 Allen Street**Cottage Charm With a Modern Twist**

Step inside and be amazed by the extensive renovations in this practically new home on Allen Street. Ideal for first-time buyers, vacationers, or investors, offering three double bedrooms, an open plan kitchen and living area, a stylish bathroom, and a laundry area.

The meticulous renovation includes a new kitchen, modern appliances, rain shower, insulation throughout, rewiring, and gas hot water. Enjoy Mt Hutt views from the spacious front deck, and the convenience of Allen Street's proximity to the township. This is a must see property that defies first impressions, so act quickly to secure this prime real estate!

**DEADLINE PRIVATE TREATY**  
(unless sold prior)  
Closes 2pm, 24 October 2023

**VIEW**  
By Appointment

**Sam Gregory**  
M 021 0283 8791



[www.pggwre.co.nz/ASH38429](http://www.pggwre.co.nz/ASH38429)

## NEW LISTING

**MOUNT SOMERS** 6 Pattons Road**Ready for a Change of Pace?**

This timeless, 300sqm home nestled in natural surroundings offers comfort and convenience. The open plan kitchen, dining, and lounge with a walk in pantry provide a central hub, heated by a log burner and HRV system.

The indoor outdoor flow is exceptional, featuring outdoor dining, a pizza oven & BBQ area, . With 5 bedrooms, including a master suite, second lounge, and spacious rumpus area, this home accommodates all needs. The 8,909 sqm land with Residential C zoning allows subdivision potential. Sheds, a chook house, and veggie garden offer self-sustainability. Don't miss this gem! Contact Sam or Dan for details!

**DEADLINE PRIVATE TREATY**  
(unless sold prior)  
Closes 2pm, 2 November

**VIEW**  
By Appointment

**Sam Gregory**  
M 021 0283 8791



**Dan van der Salm**  
M 021 918 233



[www.pggwre.co.nz/ASH38337](http://www.pggwre.co.nz/ASH38337)

## NEW LISTING

**METHVEN** 1 Burbank Place**Burbank Beauty!**

Discover modern living in Methven's sought after Camrose Estate with this newly constructed gem. This versatile home offers three spacious bedrooms, including a master suite with a walk in robe and ensuite, plus a large family bathroom.

This brick home is well insulated, double glazed, and low maintenance, ensuring year round comfort. Open plan kitchen & lounge with seamless indoor/outdoor flow to the patio. A heat pump and log burner provide year round comfort. With Methven's booming population and easy access to Christchurch and Ashburton, seize the opportunity to call this house your home before Christmas.

**DEADLINE PRIVATE TREATY**  
(unless sold prior)  
Closes 2pm, 2 November 2023

**VIEW**  
10.30 - 11.00am, Sat 21 Oct  
5.30 - 6.00pm, Wed 25 Oct

**Sam Gregory**  
M 021 0283 8791



[www.pggwre.co.nz/ASH38426](http://www.pggwre.co.nz/ASH38426)

## NEW LISTING

**METHVEN** 44 Line Road  
**Exceptional Lifestyle Opportunity!**

Are you searching for a perfect blend of comfort, convenience, and opportunity? Look no further! Nestled on the outskirts of Methven sits this four bedroom home with a warm and inviting interior. Packed with features and close to schools, sports, and town amenities, this entry level lifestyle property comes with breathtaking views of the Alps.

Two fenced paddocks plus a two bay shed with power and room for another garage or shed. It is affordable, spacious, and ideal for a sustainable lifestyle. Don't miss this rare opportunity to own your dream home!

**DEADLINE PRIVATE TREATY**  
(unless sold prior)  
Closes 2 November 2023

**VIEW**  
11.30 am - 12.00pm, Sat 21 Oct  
4.30 - 5.00pm, Wed 25 Oct

**Sam Gregory**  
M 021 0283 8791



**Dan van der Salm**  
M 021 918 233



[www.pggwre.co.nz/ASH38520](http://www.pggwre.co.nz/ASH38520)



# Dan and Ben

## - best of friends!

Annie Jacobs

*Ben coming to see what treats Dan has for him*



*Dan and Ben having a hug*

Ben is a seven year old Jersey steer owned by Dan Clark. They are the best of friends and never far away from each other.

Dan has hand reared Ben since he was four days old and he has done a great job as Ben has grown to be enormous. Dan's Dad Calvin, guesstimates that Ben weighs about 500 kgs.

"He's too big to go through the yards and get weighed, so it is a guess," he laughed.

Ben is a big solid fellow who loves Dan to feed him stock pellets as a treat.

"He hears the pellets rattling in the container and he comes running down the paddock, grins Dan.

Ben also knows a trick or two.

Dan gives Ben a quiet command, "Give me five," laying his hand near Ben's ear and sure enough, Ben flicks his ear into Dan's hand.

"I love that he is so big and friendly," says Dan snuggling up to Ben. And big he is - with Calvin well over six foot tall, Ben's back is as high as Calvin's chin!

"He'll never go in the freezer," assures Calvin, "he'll be around for a long, long time." Jersey cattle can live up to 20 years of age if they're well looked after. And Ben is. He and his paddock mates are grass fed along with stock pellets, muesli and straw and they love silage!

"He also loves dandelions," says Dan.

Another very unique thing for this day and age is that Dan can ride Ben (this is of course, when it suits Ben!).

"Sometimes when we come out to visit him, he gives me hugs."

Dan helps to look after Ben by keeping his hooves and tail trimmed.

***Dan and Ben - best of friends, those two!***



# Cricket - first time in 30 years on a grass wicket

*Despite the very wet and windy spring conditions at the weekend, Rolleston College's first XI team came to Mt Hutt College at Methven.*

They were to play against the Mt Hutt College (MHC) First XI's on the the new grass cricket wicket out on the back sports field.

The MHC team members have been playing together since Year 6, but it i the first time in 30 years they've played on the grass wicket.

Fish McHugh is the team's coach and does the pitch preparation. The wicket came about through a strong community effort with locals pitching in to have it completed.

Enormous credit and thanks goes to Fish who has done loads of work with the wicket, and also to local businesses KT's and Jackson Holmes, along with Russell Wylie (most decorated test wins for a groundsman in NZ history at Lancaster Park), who kindly supported and worked alongside Fish. Thanks also to John Fulton who sponsored the grass seed and David Sewell who came and put the grass seed down.

"I found an old reel mower over there in a shed and got that going, it's great," laughed Fish who was also very grateful to Humm Engineering and Ballance Fertiliser for their support and work in getting the wicket ready to go.



Annie Jacobs

Byron Campbell

**Allen's**  
ASHBURTON  
LIQUID WASTE DISPOSAL

**P00CRU WORKING IN**  
**Methven**

**Septic Tanks • Drain Clearing**  
**On Farm • CCTV Camera Work**

**03 308 5293 027 433 3563**

**WEEKLY!**

Rural

**Philip Wareing Ltd**

Swinglifting  
Daily freight  
Silo storage  
Log cartage  
Cool storage  
Grain cartage  
Stock cartage  
Container cartage  
Firewood supplies  
Bulk Grain storage  
Agricultural spraying  
Lime & Super spreading  
Precision Nitrogen sowing  
Hay & Straw cartage

Philip Wareing 027 433 4897  
Simon Wareing 027 228 9448  
Gary Sheridan 027 672 3995  
Grant Kenny 027 414 2886  
Julia Childs 027 433 4541  
Stephen Currie 027 224 5037  
Ian McLean 027 433 4545  
Dan Kennedy 027 432 0898  
Thomas Ward 027 433 4548

Line Road, Methven  
Phone 302 8616  
[www.philipwareing.co.nz](http://www.philipwareing.co.nz)  
[philipwareingltd@extra.co.nz](mailto:philipwareingltd@extra.co.nz)





Patrick McHugh

ADVENTURES  
**Escape**  
Explore  
The  
World  
By Bike  
in 2024

HOUSE OF TRAVEL

Bookings are open for all tours in 2024/2025



**Kyrgyzstan • Namibia • Colombia • Japan • Cambodia • Kenya & Tanzania • New Zealand**

Meet Tom and chat about our tours with House of Travel Ashburton, Thursday 31st October, 5.30pm  
RSVP to House of Travel Ashburton, 03 307 8760, by Thursday 26th October. Location to be confirmed

+64 3 545 1789 | [escapeadventuresnz.com](http://escapeadventuresnz.com) | [info@escapeadventures.co.nz](mailto:info@escapeadventures.co.nz)



# Great fundraiser at the car wash

Annie Jacobs



Mckenzie Baty, Savannah Clark, Isaiah Carter, Zane Harmer

Four Mount Hutt College students were hard at work at Bubble and Squeak Car Wash on Saturday, fundriasing for an upcoming sports trip.

The car wash, kindly sponsored by John and Emma Harmer, was the starting point for fundraising which will see a rugby team and a netball team travel to Brisbane, Australia in 2024 for some international sporting fixtures.

"We think there are about 22 rugby players and 20 netballers going on the trip," said Mckenzie Baty.

"Adults will be running the bar at the rodeo next weekend as a fundraiser," said Savannah Clark, "and also we're going to have 'You've got my back' teeshirts."

Plans are afoot for a Golf tournament on 2nd December suitable for any age where they will do the entertainment, food and drinks.

Anna Johnson is leading the fundraising and the students thought that Mount Hutt College Staff Mr Campbell and Mrs Staples would be travelling with them along with some Parents.

The students are looking for more fundraising opportunities and if you can help, please contact Anna Johnson at Garage Gym.

## CALL MAINLAND NOW AND BOOK YOUR 2023 TAILING IN

- LARGE SET OF PORTABLE YARDS ➤ DOUBLE RACE
- DOUBLE LAMB PENS ➤ LARGE HYDRAULIC CONVEYOR
- ELECTRIC TAILING IRON



**ALL FOR SMOOTHER, EFFICIENT AND CAREFUL HANDLING OF YOUR LAMBS.**

**7 OR MORE COMPETENT STAFF WITH CAPABLE WORKING DOGS IF NEEDED**

**BOOK NOW!**

OPERATING SOUTH ISLAND WIDE

CONTACT DALLAS - 027 306 1738 or ZAC - 027 393 0933  
or message us on Facebook or Instagram - Mainland group



# Foothills Catchment Group opens its doors to community

Janine Holland

The Foothills Catchment Group is opening its doors to the community on Wednesday 25 October, 7.30pm, at Staveley Hall.

Learn how the group came about and their vision for improving the foothills environment. Group members will speak about current projects including water quality testing along the foothills, and native plantings beside Staveley Stream.

## Foothills Catchment Group Community Evening

Wednesday 25 October,  
7.30pm,  
Staveley Hall

- Learn about the catchment group's vision for the foothills
- Guest speaker Dr Brett Painter talking about water sampling
- Bring along a water sample for free nitrates test
- Supper provided and family-friendly

RSVP to Chris Gibbs by 20 October  
021 317 669  
or email: [chris@cgag.nz](mailto:chris@cgag.nz)

People who live in the foothills are invited to bring water samples and the group will demonstrate how a nitrate sensor probe works. Guest speaker Dr Brett Painter, a water systems scientist (known to friends and colleagues as The Water Detective), will talk about how to make sense of local water monitoring information. Brett's passion is

understanding how Canterbury's water systems function and how these systems can be enhanced. After 17 years as a researcher (based at Lincoln University), 11 years as Project Leader for Environmental Infrastructure across Canterbury (supporting the Canterbury Water Management Strategy - CWMS), Brett has just completed two years as Executive Director of the Hekeao Hinds Water Enhancement Trust (HHWET).

Through his CWMS role, Brett led the development of concepts such as Managed Aquifer Recharge, Near River Recharge and Irrigation Nutrient Recycling. In his spare time Brett is a professional musician and music teacher.

This is a family-friendly event and supper will be provided. RSVP to Chris Gibbs by Friday 20 October 021 317 669 or email: [chris@cgag.nz](mailto:chris@cgag.nz).



Dr Brett Painter

**Vetlife**  
Animal Health Partners

Limited time only  
**25% off\***

**TREATS & TOYS THEY'LL COME RUNNING FOR**

Pop on over to Vetlife Methven to stock up on premium pet toys and treats, and enjoy 25% off this month while stocks last.

\*Discount available October 2023; not available at other Vetlife clinics. Vetlife reserves the right to change terms and conditions without notice. Vetlife is a registered trademark - all rights reserved. CAA0016c

**[vetlife.co.nz](http://vetlife.co.nz)**



# Walking Festival secures grant

*Nine Mid Canterbury events have been granted a total of \$30,600 to help attract visitors from outside the district.*

The Methven and Foothills Walking Festival secured a grant, following its successful inaugural event last year.

It was the last round of grants from the Ministry of Business, Innovation and Education's Regional Event Fund, which was set up to kickstart local events that support cross-regional tourism recovery.

Compliance and Development Group Manager Jane Donaldson said the Regional Event Fund was about helping events that would also encourage visitors to come and stay overnight in the district.

"That creates an additional boost for local

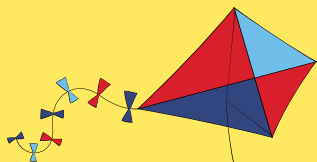


businesses, as these visitors stay on and shop, eat at local restaurants and explore the district."

She said the fund was oversubscribed with 17 applicants and the successful ones were decided by a panel including Council and community representatives.

"There were some great events seeking grants, so it was a hard job. It was clear though, that local groups and businesses are back in the event business and that is great to see."

***Methven and Foothills Walking Festival was granted \$1,000 for its next event.***



## A breath of fresh air in IT support

**Remote support** - say goodbye to call out charges

**Super competitive rates** - great value support

**Speedy service** - same day service where possible

**Qualified technicians** - our staff are all industry qualified locals



✓ Laptop repairs

✓ Desktop repairs

✓ Printer repairs

✓ Remote support

✓ Internet

✓ Email

✓ Data recovery

✓ Backup systems

**Call now for a free consultation**

**Computing  
Solutions**

03 308 3400 | 144 Moore Street, Ashburton  
[www.comsol.net.nz](http://www.comsol.net.nz)





# Protecting yourself from frauds and scams

You can have a brief yet in depth look at what types of scams and frauds we are seeing in New Zealand, next Tuesday at Ashburton Event Centre.

U3A (see their advertisement below for more details), are hosting the event where the guest speaker, Chris Hill will share what scams look like, how we can identify them, and how we can all work together to protect ourselves and each other.

Chris Hill has been a Home Loan Specialist for ANZ Bank in the Ashburton Branch, since April 2022.

A born and bred Ashburton man, Chris lives in Ashburton with his wife and three young children. Chris gets to help New Zealanders actively pursue their Kiwi dream all around the country, and sometimes all around the world! He also helps clients with everything from their insurances, to their savings and investments, and of course, awareness of fraud and scams.

Chris is an active Board Member on a local Primary School, a coach, delegate and committee member of a local JAB Rugby Club, always trying to lend assistance to any who may need his help where required.

If you would like to know more or become better educated about frauds and scams, come along to the event which will give you real life tips to assist yourself, your family and others in keeping safe with your money.



Chris Hill

Hakatere/Ashburton



For Life Long Learning

Tuesday 24<sup>th</sup> October  
10.15am

Guest speaker  
Mr Chris Hill,  
ANZ Senior Banker in Ashburton

Protecting Yourself  
from Fraud and Scams

Casual visitors \$10 cash at the door  
Ashburton Event Centre

## Draft Local Alcohol Policy

Earlier this year, we consulted the community on our Local Alcohol Policy, which regulates when, where and how alcohol is sold in our district.

We received a lot of great feedback and in response, we're proposing to make two changes.

- 1 **Extending trading hours for licensed areas on footpaths** to 1am (currently midnight) to make it easier for licensed premises to manage their closing times.
- 2 **Applying the one-way door restriction to the entire district** (currently only Ashburton urban areas and some rural venues).

*Do you support the draft Policy with the proposed changes?*

Have your  
**Say!**

**FINAL WEEK  
TO HAVE  
YOUR SAY**



**We want to hear from YOU!**

Visit [ashburtondc.govt.nz/haveyoursay](https://ashburtondc.govt.nz/haveyoursay) to find out more.  
Feedback closes 5pm, Wednesday 25 October.





## Justices of the Peace (JP)

### Ashburton Forks

Anne-Marie Allen 027 284 8013

### Lauriston

Dianne Prendergast 027 235 7227

### Lyndhurst

James Anderson 03 302 4943

### Methven

Jennie Coleman 027 222 4214

Julie Cunneen 03 302 8454

Paul Dixon 03 302 8767

Liz McMillan 03 302 8081

Martin Nordqvist 03 302 8717

### Mount Somers

Wendy Millichamp 03 303 9743

Anne Parnham 03 303 9877

Robert Schikker 021 186 6107

### Springburn

Rob Withers 03 303 0901

Please do not sign any documents before you see the JP. The JP service is free.

Go to: <https://www.jpfed.org.nz/> to find a JP in another area.

# Public Hearing over Methven Resort extension plans

**Linda Clarke**

*An application for resource consent to expand Methven Resort will be heard by an independent planning commissioner at a hearing in Methven on 26 October.*

The application seeks to construct two new visitor accommodation wings at the resort, expand the existing restaurant/bar area, replace both the swimming and spa pools and erect additional signage.

The application has been processed under limited notification and three submissions were received in opposition; these will be heard by the planning commissioner next Thursday.

The hearing will be held in the function room at the Mt Hutt Memorial Hall, starting at 10am. It is open to the public.



## STOP BIRDS

leaves, snow and hail  
from blocking up your spouting

Gumleaf Gutter Guard has been proven on thousands of homes across Australia and New Zealand over the last 12 years.

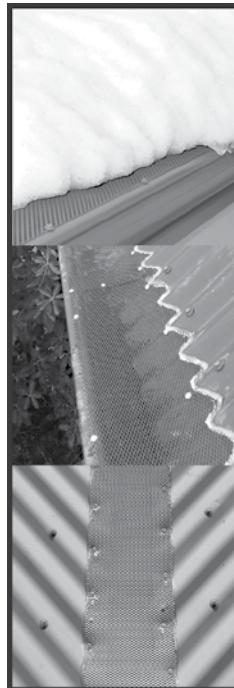
Quality materials: BHP Colourbond steel mesh with unique patented louvre which will even keep out pine needles. Will not rust or sag with age or load.

Colour matched to your existing roof colour and a 10 year warranty for total peace of mind.

Call Rohan Rudd for a no-obligation assessment and quote anytime, any day except Sunday.

**GumLeaf**

0800 486 532  
or 03 982 8850  
[www.gumleaf.co.nz](http://www.gumleaf.co.nz)



**SEA TO SKY BUILDERS**  
0274 575 362 [sea2skybuilders.co.nz](http://sea2skybuilders.co.nz)

New builds

Home renovations

Alterations and repairs

Kitchens and bathrooms

Decks and fences

NO OBLIGATION

FREE CONSULTATIONS



- SHEEP, CATTLE, DEER & EQUINE FENCES
  - POST & RAIL FENCES
  - SHEEP & CATTLE YARDS
- FARM MAINTENANCE & LAND CLEARING
- GENERAL EXCAVATIONS

For a quality job,  
call Nate on  
**022 044 7173**

MIKE WARD - 0274 575 362  
[mikesea2sky@gmail.com](mailto:mikesea2sky@gmail.com)  
[www.sea2skybuilders.co.nz](http://www.sea2skybuilders.co.nz)



## BRUCE MCILROY LTD

### European Vehicle Servicing

Maintenance and Repairs  
Advanced Diagnostics  
Experienced Technicians

**Contact us for an appointment**

Phone: 03 308 7282

Email: [anthony@bentleyservice.co.nz](mailto:anthony@bentleyservice.co.nz)  
309 Methven Highway, Ashburton 7776





# Foothills Grants Applications very successful

*The Foothills part of Mid Canterbury were successful in a second round of Ashburton District Council's Community Grants.*

Another \$33,500 was granted for other community projects, including \$10,000 to help the Greenstreet/Ashburton Forks Hall Reserve Board underground and upgrade ancient electrical wiring in the hall.

Mayor Neil Brown said it was always a pleasure to grant money for community projects and about \$300,000 had been given to organisations and community groups this financial year.

"All of these projects and causes make the Ashburton District a better place to be, whether it is helping restore a small native forest or rebuilding an old fire truck that has historical significance for the suburb of Allenton."

**Biodiversity: Lake Clearwater Hutholders Association, \$7,500** - Hutholders are creating a strip of wetland running from the foreshore of Lake Clearwater to the public camping ground and volunteers plan to plant 1,716 natives that will help deal with wastewater from the camping ground.

**Staveley Campsite Committee, \$7,500** - the committee will use the grant to help its ongoing work to protect and restore 10ha of remnant forest at Staveley Camp Forest.

**Staveley Wetland Restoration Project, \$7,500** - this project is about restoring an original wetland on the corner of Arundel Rakaia Gorge Road and Sawmill Road. The grant will be used to plant over 3880 plants this spring and for maintenance during the next two summers.

**Discretionary Fund: Greenstreet/Ashburton Forks Hall Reserve Board, \$10,000** - the Board is undergrounding power to the hall

and upgrading old wiring and light fittings in the hall. It will also install a heat pump to replace old bar heaters, and add some new power points.

**Community Infrastructure: Alford Forest Reserve Board, \$5,500** - the Board is installing a heat pump in the Alford Forest Hall. The hall is regularly hired and the old heaters need replacing.

**Lauriston Hall, \$3,000** - the grant will help pay for new aluminium windows in the hall, which is also used by Lauriston School. The old window sills are rotting and the building is no longer watertight.

**Methven Croquet Club, \$5,000** - the Club is removing a hedge surrounding one half of the croquet lawn, and will replace it with a colour steel fence. It will be safer environment to play and easier for members to maintain.

**Trail Maintenance Fund: Mt Somers Walkway Society, \$2,500** - the Society will use the grant to help refurbish an existing wooden corduroy crossing a swampy area on the walking track to Woolshed Creek hut, near the Bus Stop. Work involves preparing and cutting timber, carting and flying it to site and installation. A new crossing will make the track safer for trampers to enjoy the area, especially in winter.

**Methven Lions Club, \$2,500** - Club members will use the money to help complete the walkway which will eventually circumnavigate the town.



I.T. Question? Computer Issue?  
**THINK DCS – A.S.A.P**



DYNAMIC COMPUTER SERVICES

- Local people and local support
- IT Services & Support
- Products and services without the confusing technobabble

**CALL NOW: 03 307 8501**

*Member of BNI Ashburton*

131 Alford Forest Road, Ashburton  
E: [info@dynamiccomputers.co.nz](mailto:info@dynamiccomputers.co.nz)  
Office Hours: 9:00am - 5:30pm



# Artistic traps at work in Rakaia Gorge Walkway

**Rakaia Gorge Fantail Trust**  
**Robert Koller**

*We have recently bought 30 more DoC150 traps and had the idea of getting them painted by the local school children at Windwhistle.*



It was a great success! They produced some outstanding works of art. They look fantastic and all of them are now deployed on the walkway to put a smile onto the face of walkers. The Rakaia Gorge Walkway has now become an open air gallery!

The trust is going really well and the numbers of predators removed is climbing all the time. We have now over 400 traps in the forest and caught over 800 possums, around a 1,000 rats and nearly 70 stoats. That is going to make a big difference for this breeding season and we are very hopeful that in January we will hear even more birds down there.

We believe that even now, the birdlife has increased since we started. Bellbirds are

very common as are fantails and especially the grey warblers we notice much more. We also see kereru, silvereyes and a pair of tomtits has turned up. Then there are song thrushes, yellow hammers and finches. It is a delight and every day I am trapping, I think I hear more birdsong. It is of course all a bit subjective but we are measuring the bird life and in time it will surely give us proof that things are improving.

We invited Windwhistle school students to paint the traps. They write:

"Robert asked if the children would like to decorate some new traps he was having made for the walkway. The children were very excited about this and got busy designing their artworks.

We set to work painting in the pool shed to protect our artworks while they were being created. First we undercoated each trap with two coats of white. Then our art came to life. This term we are going to be learning more about trapping and we hope to get along to the walkway and try to spot our traps. You can see some of photos of the traps Robert sent to us below on the walkway. I wonder if they have caught any pests yet? Special thanks goes to Mrs Mac for finishing these off after Mrs Seaward headed away to China.

They were certainly a bigger job than we initially thought with the children creating such amazing, eye-catching designs."



**MAY BROTHERS**  
contracting

- Ploughing
- Cultivation
- Grain Harvesting
- Windrowing
- Muck Spreading
- Cartage
- Direct & Conventional Drilling
- Fodder Beet Planting & Harvesting
- Maize Planting & Harvesting
- Forage Harvesting
- Baling Round & Square
- Supplementary Feed Sales

New Strip-Till  
Service now available

**CALL NOW**  
to discuss  
your feed  
requirements!

**FEED FOR SALE**

- Silage
- Straw
- Fodder Beet

## CONTACT:

<b>Phil</b> (Managing Director)	027 699 0795	phil@maybrothers.co.nz
<b>Tim</b> (Sales)	027 323 4048	tim@maybrothers.co.nz
<b>Ben</b> (Baling, Chopping)	027 538 8336	ben@maybrothers.co.nz
<b>Nick</b> (Cultivation, Drilling)	027 538 8369	nick@maybrothers.co.nz
<b>Matt</b> (Transport, Feed Sales)	027 220 2475	matt@maybrothers.co.nz

**Office 03 307 8001**  
**office@maybrothers.co.nz**  
**www.maybrothers.co.nz**



# Young Methven Golfers perform well for Aorangi

**Bruce Dickson**

Young Methven golfers, Patrick Currie and Finn McGrath have performed well for Aorangi recently in the North Island.



**12 - 18 October**

Tenille Clemett 23  
 Pat Johnson 13  
 Laura Lill 46  
 Danielle Daly-Lemon 30  
 Piper Lill 13  
 Deb Shears  
 John Concannon 2  
 Dale Stanley  
 James Joyce 11  
 Jack Miers 20  
 Philip Wareing  
 Tom Horne 4  
 Will Fitzgerald 9  
 Will Harkness 19  
 Joyce Thomas  
 Tristan Naidoo 8  
 Rob Featherstone 25  
 Kobie Gray 20  
 Luke Dravitzki 21  
 Rodger Heijgen  
 Jo Stern  
 Isabella McDonald 21  
 Brielle McDonald 21  
 Jak Van Den Heuvel 15

**CONGRATULATIONS**

**Luke Dravitski**

Pop into Methven 4 Square Supermarket for your surprise!



Bottom row, second from right: Patrick Currie

Patrick played No 2 in the combined Aorangi-Southland six person team at the Under 19 Inter provincials in Cambridge.

He said it was a pretty tough week playing some pretty impressive young golfers on plus handicaps from around the county. He played seven rounds over five days in the second week of the holidays. "I tell you my shoulders definitely knew about that by Friday," was his first comment.

"It was as an awesome week and I would definitely recommend any young golfers coming through to strive to make this team in future years because it's a hell of an eye opening experience," added Patrick.



Centre: Finn McGrath

He stayed at St Peters School with all the other golfers for the week.

Meanwhile Finn was representing the Eagles Aorangi three person team in New Plymouth over three days in the Under 17 Eagles Tournament. The team finished 5th equal with Auckland against 14 other teams. In the individual boys section he was 14th out of 32 for stablefords and 16th for netts. His Stableford score of 91 over the three days was 91 just six behind the winner. He had rounds of 94, 91 and 86. His score could have been even better if he had not lost two balls on each of the first two days.

He was very satisfied with his performance.

Well done Patrick and Finn!

**It certainly has been an exciting time for young Methven golfers.**

**Methven Autoservices Limited**

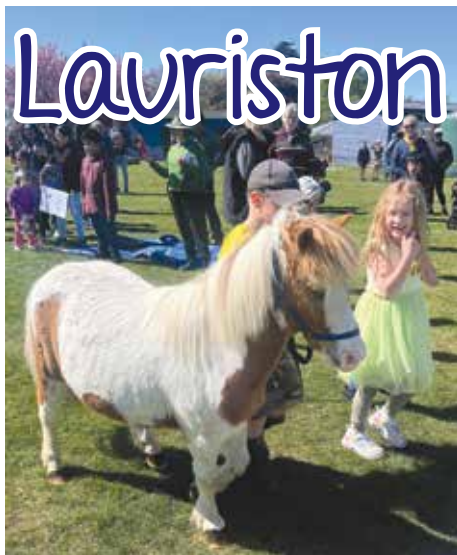
**For all of your vehicle needs**

- tyres
- service
- warrant of fitness
- air conditioning
- engine repairs

Open Monday to Friday 8am - 5pm  
 phone 03 302 9077  
 or email: [methvenauto@xtra.co.nz](mailto:methvenauto@xtra.co.nz)



# Lauriston School News



*The sun was shining and we were ready for the Lauriston School Pet Day last Wednesday.*

The day started with children coming in carrying creations: lego, farm in a shoe box and decorated cupcakes which covered the classroom tables. It was then time for the Agrikids rotations. We got into our house groups and rotated around different activities led by Mums' and Dads'. There was a seed and plant identification activity, gumboot throw, sack race, egg and spoon race and an obstacle course where we had to climb over bales and balance on a big pipe.

We had morning tea then all of the animals started to arrive. Lambs, calves, dogs, cats, roosters - there were animals everywhere! We had some judges come to look at our animals, then it was time for the lamb and calf drinking race. They were fast drinkers. We then had the grand parade, some animals were even dressed up. We had a yummy barbecue lunch followed

by prizegiving. Then it was time to take our animals home after such an exciting day!

Mt Alford's favourite parts:

**Sadie:** I liked climbing on the bales.

**Samantha:** I liked walking in the parade with Rosie.

**Danika:** I liked jumping off the hay bales.

**Max:** I liked jumping off the trailer.

**Violet:** I liked when the judges judged the lambs.





**THE ALPINE GRIND**

**Weekly Community Heroes**

**Kendra Maw**  
**Mary Jones**  
**Mary Ralston**

Winner  
**Mary Jones**

Pop into The Alpine Grind to receive your free coffee

If you know a local hero, head in to The Alpine Grind to nominate them.



**METHVEN**  
**Touch Rugby**

**Senior Grade** teams registration forms available  
facebook group: Methven Touch Rugby  
or pick one up from Four Square, Alpine Grind, or Hammer Hardware

**Junior Grade** teams register at  
<https://www.sporty.co.nz/methvenjuniortouchrugby>

**Register Now**

Questions? email: [andymcplus3@gmail.com](mailto:andymcplus3@gmail.com)



# MtSS News



*We have had Science magic at Mt Somers Springburn School (MtSS).*

We were fortunate to have the team from Science Alive come out to our kura and put on a jaw opener of a showcase.

The main focus was to look at the element C2 which, if we dust off our high school hats, would know that it is Carbon. What was an eye opener for the children is the two examples they showed us. At one end you get a diamond, at the opposite end you get charcoal.

The children got to make their own atoms and many got to be volunteers for the hands-on experiments. We had liquid nitrogen, magnets shouting up and even the Principal on a bed of nails and an eager volunteer to stand on him at the same time!

One child commented, "Wow, this is a magic show."

Talk to a scientist and they will say Science is magic.

## METHVEN TYRE & HIRE

— YOUR LOCAL BRANCH OF NEUMANN'S TYRES AND ASHBURTON U-HIRE —



**Your reliable and convenient solution for all your tyre and equipment needs.**

Passenger Tyres • Truck Tyres  
Wheels • Agricultural Tyres  
Punctures and Repairs  
Tyre Vulcanising • And more!

**Excellence perfected,  
unmatched quality,  
exceptional service!**



**24 CALL OUT  
SERVICE  
HOUR AVAILABLE**

**03 302 8411**  
24 Methven, Chertsey Rd  
METHVEN

**NEUMANNSTYRES**  
neumannstyres.co.nz

**ASHBURTON  
U-HIRE**





## OLS News



**Last Friday, Our Lady of the Snows School participated in a thrilling Athletics Day with Methven Primary School and Lauriston School. The event was a celebration of sportsmanship, camaraderie, and the spirit of healthy competition.**

Students from all three schools came together on the field to showcase their athletic prowess, engaging in a variety of track and field events, such as sprinting, long jump, and shot put. The atmosphere was electric, and the young athletes gave their all, not only in pursuit of victory but also in fostering a sense of community among the schools. This Athletics Day was a resounding success and highlighted the importance of physical education and teamwork in the development of young minds. A huge thank you to Methven Primary School for organising and hosting us on the day!

In addition to the Athletics Day, Our Lady of the Snows School recently celebrated Rugby Day with great enthusiasm. The students marked the occasion by dressing up in their favourite

rugby team jerseys and participating in a range of exciting rugby-themed activities. This special day provided an opportunity for students to learn more about the sport and its values of discipline, teamwork, and determination. The fun-filled activities and games helped instil a deeper appreciation for rugby and promoted a healthy and active lifestyle. The success of Rugby Day showcased the school's commitment to offering a well-rounded education that goes beyond traditional academics.

Both the Athletics Day and Rugby Day underscore the importance of sports and physical activities in our school's curriculum. These events not only promote physical fitness but also help instil values of teamwork, sportsmanship, and a sense of community among our students.




- covered yards cleaning
- sheep yard cleaning
- calfsheds cleaning
- concrete placing
- concrete removal
- hedge removal
- soak holes
- driveways
- trenching

Check  
out our new  
website!



Open weekdays 8am-5pm  
[www.ktscontracting.co.nz](http://www.ktscontracting.co.nz)  
 Phone 027 458 2000  
[www.ktscontracting.co.nz](http://www.ktscontracting.co.nz)

## Methven Panel & Paint Ltd.

Specialist paintwork



03 303 3148  
 47 Line Road, Methven  
 Email: [methvenp@xtra.co.nz](mailto:methvenp@xtra.co.nz)  
 After hours: Matt 027 711 7117



# MPS News



**Last Friday, Methven Primary School hosted the Methven Area Athletics Day with students from Lauriston, Our Lady of the Snows and Methven Primary Schools' participating.**

Students were split into two groups: Juniors (year 0 – 2) and Seniors (years 3-6).

The junior activities aimed to provide opportunities for the children to develop their running, jumping and throwing skills, while also having fun. The activities included: corn hole, balance relay, parachute, flying disc, javelin with pool noodle, overhead, fun obstacle, sneak up taniwha egg and spoon and gumboot throw. Thank you, Mrs Spittal and Miss Wright, for organising these activities.

The senior primary school students competed following more traditional athletics disciplines, in running, throwing and jumping events. Running events included sprints: short and long, and, a long-distance race (approximately 1000m), which was voluntary for year 5/6. The throwing events were: shot put

and discus. And, the jumping events were: long jump and high jump

Despite it being a gusty norwest day, students participated and competed enthusiastically, and were well supported by family and friends in the crowd.

Thank you to the Methven Lions for bringing along their barbecue and assisting in the cooking of burgers. This supported the Year 6 parent group who were selling food to fundraise money toward the upcoming camp to Waipara.

Special thanks to Mrs Rachel Brown who does such an awesome job of organising this athletics day each year.



## the mobile ear nurse

- Ear wax removal by microsuction
- Removal of foreign bodies
- Assistance with other ear conditions
- Home visits
- ACC registered provider
- Veterans affairs provider

**New in Methven! Monthly!**  
Professional and friendly service.  
Book your homevisit now for Wednesday the 25th of October. \$70 per visit.

**Sabine Hellenbrand** Registered Nurse  
Email: [sabine@mobile-ear-nurse.nz](mailto:sabine@mobile-ear-nurse.nz) Ph: 022 188 3755  
[www.mobile-ear-nurse.nz](http://www.mobile-ear-nurse.nz)

## STARTING SCHOOL PARENT MEETING

**Will your 4 year old be starting at MPS in 2024?**

We invite you to meet with Junior Teachers, our Principal and office staff to learn about the enrolment process, transition visits, and our New Entrant programme.

If you can't make our evening, please contact us to arrange a meeting at a time that suits your family.

**7pm Wednesday 25th October**

RSVPs would be appreciated:  
302 8500 or [office@methven.school.nz](mailto:office@methven.school.nz)  
For more information on our school visit [www.methven.school.nz](http://www.methven.school.nz)





# GROW YOUR OWN

Mary Ralston

## It's National Gardening Week!

National Gardening Week is a celebration of the good old vegie garden. Growing your own fruit, veges, herbs and flowers is fun, rewarding and healthy – in many ways. It is a great physical activity, and gives us the benefits of outdoor sunshine



and hands-in-the-dirt connection with nature. It's a good way to spend time with family and friends and gets the kids away from those devices.

We're pretty lucky to be vegie gardening in the Methven and foothills area: we have good soils, access to enough water and a "reasonable" climate (although it feels a bit unreasonable lately).

Vegie gardening can be as simple as a few herbs in a container on the deck to

a full-on garden and greenhouse. Mint, chives and thyme are easy to grow in pots as long as they're well watered in hot or windy weather.



Spring (despite the wild weather) is a good time to plant in the ground. If you're new to vegie growing, start with potatoes: dig some holes 30 cm apart and put them in. Other reliable veges for beginners are silver beet, spinach and the brassicas – cauli, cabbage and broccoli – plant these seedlings well apart (look at the label). Plant a lettuce seedling in the space in between. Always press the soil firmly around the seedlings, and water well once you've planted so there's good contact between soil and roots, and it helps anchor them on a windy day.

Then if you have the space and inclination, try planting some seeds. Big seeds are easy to handle – try nasturtium flowers and beetroot. For best results with beetroot, fork over the soil so it's free from big lumps, make a shallow furrow about 1 cm deep, drop the seed in about 2 cm apart if you can, then fill in the furrow with loose soil and press down.



Mark the beginning and end of the row with a stick.

Other veges that can go in now are peas, onions, carrots and radish. In the greenhouse, plant tomatoes; peppers and basil can wait a while.

## THE MID CANTERBURY CONNECTOR



### Community Transport Service

- Need to get into Ashburton Township from around the District?
- Got no transport? Don't drive anymore?
- Give us a call at the Connector – **phone 03 928 8164**
- We operate Monday to Friday between 9am to 4.30pm, on demand for you
- Door to door service
- Friendly, volunteer drivers
- Reasonable rates

Find us on facebook -  
Mid Canterbury Connector



Love your  
smile

We are open  
late nights and  
welcome new patients

Braces + Invisalign  
Sedation + 3D imaging  
Wisdom teeth extractions  
Implants + bridges  
Whitening

Dentures (full & Partial)  
Root canals  
One visit crowns  
Mouthguards



Dentistry on Parkside®

80 Park Street Ashburton  
Call 03 308 7472

Community Services Card  
Free Adolescent care  
WINZ Quotes

Book online: [www.dentistryonparkside.co.nz](http://www.dentistryonparkside.co.nz)





# NATIONAL MEMBER OF PARLIAMENT ELECT

James Meager



## Thank you Mid Canterbury

*At the time of writing this column, the votes have (mostly) been counted, and I am so proud to say you have elected me as the next Member of Parliament for Rangitata.*

I am blown away by our result, and am truly humbled by the confidence you have shown in me to be your voice in Wellington for at least the next three years.

This has been the culmination of 13 months of working every day to build your trust, I will not let you down.

I want to say a big thank you to the hundreds of volunteers and supporters who have delivered flyers, knocked on doors, put up signs and invited me into your homes and businesses to hear your concerns and also your ideas about how we get our region, and our country, back on track.

Under a Christopher Luxon-led National Government which you have chosen, we will do just that. The work to rebuild our economy and restore confidence in our businesses and productive sector, while delivering quality public services, starts now.

I will be hitting the ground running, setting up my offices in Timaru and Ashburton as quickly as possible so I can do the job of a local Member of Parliament (MP): supporting and advocating for you.

**...hold my feet to the fire,  
demand I stay connected  
and accountable, and  
join with me...**

Can I acknowledge outgoing Rangitata MP Jo Luxton. Jo is a wonderful woman, a thoroughly decent person, and I know she put her heart and soul into her job.

I hope we see Jo returned to Parliament on the list so that our region can benefit from having two strong voices on both sides of the aisle in Parliament. Thank you to Jo and your staff and for all of the work you have done for our region.

Finally a message to you, the voters: hold my feet to the fire, demand I stay connected and accountable, and join with me to make Mid and South Canterbury the best place to live in this great country of ours.

James Meager is the National Party MP Elect for Rangitata and can be contacted on 027 427 5197 or at: [james.meager@parliament.govt.nz](mailto:james.meager@parliament.govt.nz)

## Important decisions often require a second opinion

If you are considering your current investments, perhaps it's time to get a complimentary review.

Forsyth Barr Investment Adviser, Michelle Parkin will be at the Mt Hutt Memorial Hall every Wednesday from 9:30am until 12:30pm.

Join Michelle for a coffee and an informal chat to find out more about how Forsyth Barr's investment services can help you achieve your future financial goals.



**Michelle Parkin**  
Investment Adviser

[michelle.parkin@forsythbarr.co.nz](mailto:michelle.parkin@forsythbarr.co.nz)  
DDI: (03) 307 9541  
M: 027 598 1655

AS072023-02 © Forsyth Barr Limited September 2023

[forsythbarr.co.nz](http://forsythbarr.co.nz)

FORSYTH BARR

**WOULD A SCHOLARSHIP HELP YOUR  
TERTIARY STUDIES, INDUSTRY TRAINING  
OR PERSONAL DEVELOPMENT IN 2024?**

Advance Ashburton Community Foundation has many great scholarships available for all types of tertiary study, apprenticeships, and training.

For more information and an application form visit [www.advanceashburton.org.nz](http://www.advanceashburton.org.nz)

**Applications Close October 31st 2023**

**AACF**  
ADVANCE ASHBURTON  
COMMUNITY FOUNDATION

03 307 5902  
[Grants@advanceashburton.org.nz](mailto:Grants@advanceashburton.org.nz)



# METHVEN BRIDGE CLUB



## Stowell Trophy Round No9

### North / South:

Heather Santy	Mary Stone	60.71%
Colin Clemens	Janet Cuttle	53.57%
Jennifer Hooke	Flora Lowe	35.71%

### East / West:

Willie Ensor	Bob Todhunter	66.67%
John Barwell	Murray Hawkes	33.33%

# ROBBIE'S MIND MATRIX

- Managing mending minds

## Navigating Life's Challenges: Lessons from the Dairy Farm

*Years ago, I managed a dairy farm. It was a serene place, where cows grazed peacefully, and life seemed idyllic.*

However, as anyone familiar with farming knows, the weather can change in an instant, much like the challenges life throws at us. In particular, I remember the strong northwest winds that would sweep across the Canterbury plains. It was during one of these gusty days that the farm's owner posed a question,

"Robbie, how many northwest winds do we get a year?"

Without hesitation, I responded, "Just one." Little did I know that this simple

question and answer would turn into a profound analogy for life's struggles.

Two months later, the owner approached me again, a hint of disbelief in his eyes, and he said, "You told me we only get one northwest wind a year."

I couldn't help but smile as I replied, "We do. It just lasts six months."

It's a simple tale from the farm, but it encapsulates the essence of life's challenges. Much like those persistent northwest winds, our struggles often

## CARTER'S tyre service

- CAR TYRES
- TRUCK TYRES
- TRACTOR TYRES
- PUNCTURES
- WHEELS
- BATTERIES
- TYRE VULCANISING
- ON FARM SERVICING



CALLOUT

MID CANTERBURY  
CHRIS GOTTERMAYER  
022 317 5025

85 Line Road, Methven

WHATEVER YOU DO  
**TREAD TRUE**  
SINCE 1983



Farmlands  
an operator



## SPRING LYNNE MOTORCYCLES

Motorcycle, ATV & SXS repairs & service

On farm service

Pick up and delivery

Experienced and qualified

Competitive rates

Ph 03 302 4939

1830 Methven Highway, RD6, Ashburton

Open Monday to Friday 8am -5pm



www.springlynnemotorcycles.co.nz

## SELWYN HIAB SERVICES



Now covering Mid Canterbury!

027 222 1632

craig@selwynhiabservices.co.nz

## Word Puzzle

Use the following 10 letters to make one word:

a a b d e i l m s s

Answer: admissible - evidence that is appropriate and applicable



- GIB STOPPING
- SKIMCOATING
- WALLPAPER REMOVAL
- CORNICE INSTALLATION
- DECORATIVE CEILINGS
- CEILING RESTORATIONS
- INTERIOR PAINTING

COMMERCIAL & RESIDENTIAL

021 385 630

www.dpp.nz



### Robbie Gooserooter Shefford

feel like they might never end. But, as we delve into this story, we'll uncover the valuable life lessons it imparts.

The strong northwest winds that swept over our country represent some of the most daunting challenges life throws at us. They come unexpectedly, disrupting our routines and testing our resilience. The first time we encounter these gusts is the hardest, just as the initial gust of a problem can leave us feeling overwhelmed and unprepared. Much like our response to the winds, we find ourselves battenning down the hatches in the face of adversity. We check to ensure nothing will blow away, we secure the trampoline to the ground, we reposition the center pivots to prevent them from toppling over. It's a testament to our innate survival instinct, our ability to adapt to the ever-changing conditions of life. This process of adapting to life's tempests draws an intriguing parallel to the way we deal with mental health struggles. The first encounter with extended high winds of adversity is particularly daunting. It's a period of learning, a process of understanding what will blow away and what requires our immediate attention.

In the realm of mental health, this is akin to understanding the nuances of our emotional wellbeing. We figure out what coping mechanisms work for us, what support systems we can rely on, and how to protect our mental fortitude during trying times. Much like securing objects on a windy day, we identify our priorities and know what needs safeguarding first.

In life, we often face challenges that seem relentless, much like those never-

ending northwest winds. It's during these extended periods of difficulty that our resilience and positive thinking are put to the test. Just as we protect our possessions on a windy day, we must safeguard our mental well-being in times of adversity.

One of the vital lessons is that, by embracing positive thinking and resilience, we can navigate through the storms of life. These qualities become our anchors, keeping us steady when everything else threatens to blow away. Just as we've learned to protect our farm's assets from the relentless winds, we also learn to protect our inner strength and mental health in the face of persistent challenges.

The northwest winds reminds us that, no matter how long these gusts persist, there is always an end in sight. The wind will eventually change direction, and brighter days will come. This is a fundamental truth we must hold onto during our most challenging times. Knowing that the winds of adversity are never permanent can provide hope and the motivation to continue moving forward.

Just as the northwest winds returned season after season, life has a way of presenting us with recurrent challenges. However, there's a silver lining to this cyclical nature of adversity. Each time we have to deal with difficulties again, we've learned from our previous experiences.

It's about recognising our priorities and knowing what to look after first. This cyclic pattern is an essential part of personal growth. With each rotation of life's challenges, we become better



equipped to handle them. We understand what is truly valuable and deserving of our attention, and we build upon our resilience and positive thinking with each gust of adversity.

The northwest winds that sweep across our landscape are more than just a weather phenomenon; they are a symbol of life's challenges. Just as the winds persist, our struggles can feel unending. Yet, with resilience, positive thinking, and the wisdom gained from each encounter, we can navigate through the extended periods of difficulty.

In the face of life's tempests, we batten down the hatches, protecting what matters most, and holding onto the knowledge that, like the winds of adversity, they too will change direction. The cyclic nature of these challenges allows us to continually learn and grow, emerging stronger and more capable with each passing gust.

So, as we face the challenges life brings, let us remember the valuable lessons that the wind brings, where northwest winds became our mentors in resilience and the importance of embracing a positive outlook.

***Just as we've learned to survive and thrive amidst the gusts, we can weather the storms of life and emerge wiser, stronger, and better prepared for whatever lies ahead.***

## GREAT SPACE STORAGE

20 foot containers

Sheds from 2m x 3m to 8m x 15m



027 321 8781



Greatspace@outlook.co.nz



Greatspacestorage.co.nz

9, 11, 12 Line Road, Methven

### Jenni Gibson Celebrant

- Weddings
- Renewal of Vows
- Namings
- Funerals and Interments

P: 03 324 8332 M: 021 723 089  
W: [www.newzealandcelebrant.nz](http://www.newzealandcelebrant.nz)

## SNOWFED PHOTOS

**only \$5!**

[letterbox@snowfed.co.nz](mailto:letterbox@snowfed.co.nz)  
ph: 03 302 8437 ext 3



## PTA NEEDS YOU!

Mt Hutt College PTA

# AGM

Wednesday 25th October 2023  
6:30pm

Mt Hutt College Library

All apologies to:  
[pta@mthutt.school.nz](mailto:pta@mthutt.school.nz)

Due to COVID disruptions and a committee that is well and truly over committed, we have unfortunately come to the point where the PTA will have to fold if we can't find committed parents to come on board and form a brand new PTA committee.

This is your chance to be involved and make a difference helping and supporting the students and staff of Mt Hutt College, it is a chance to start fresh.

The PTA requires the following positions to be filled as well as general committee members so please come and support what you can and will be a very worthwhile committee.

- Chair person
- Secretary
- Treasurer



*We look forward  
to seeing you  
there!*

## Administration & Advertising Support

Part time position

Due to significant growth at the Snowfed - Methven and Foothills Community Newspaper, we are seeking an enthusiastic person to assist with administration, marketing and advertising in a part time capacity.

### About us:

Since 1986, the much-loved and well-read Snowfed has been published weekly and delivered free to households, farms, businesses and lifestyle blocks in the Methven, Foothills, and western plains of Mid Canterbury. We feature news, celebratory articles and information, sports and topical items of interest to our readership which is mostly in Mid Canterbury but is also spread around New Zealand and the rest of the world.

### About you:

You will have previously worked in administration, advertising/marketing, (preferably but not limited to media). You will be able to network in a warm, friendly, efficient manner with our existing and future clients, fostering strong business relationships with a can-do attitude. Computer skills in Indesign and Photoshop would be a plus however training is available for the right person.

Fixed hours with further flexible casual hours as required.

Please email your application and CV to Annie Jacobs:  
[letterbox@snowfed.co.nz](mailto:letterbox@snowfed.co.nz)

**Applications close on Friday 10th November 2023.**



## CLASSIFIEDS

**ARE** you sick of the slow engine response from your diesel ute? Consider fitting an S-DRIVE. Big performance gains for low cost. See Andrew at Methven Motors or phone 03 302 8201.

**BATTERY** Problems? Come talk to your friendly Auto Electricians at Methven Motors for a FREE Battery test. Tel 302 8201 ext 2

**CHEAP** Pasture Seed. At just \$6.75 per kilogram, Grasslands Marsden ryegrass gives you access to AR1 technology in a hybrid perennial with a proven track record for strong cool season production, high palatability, and excellent stock performance. Available from McCaw Seeds on 03 302 8510.

**CHIM** Chim Chimney Sweeps-We'll sweep your logburner's flue, check firebricks, baffles, airtubes & controls. We're experts on coal-ranges, and can sweep any sized open fire. We quote & undertake repairs, flue extensions & install bird netting. 0800 224 464 [www.chimchim.nz](http://www.chimchim.nz)

**FIREWOOD** & Treework. Tree removal, call RK Firewood. Top money paid for big large trees. Call Rini 027 451 7300

**METHVEN** Acupuncture Clinic opens Monday to Saturday. To book Junco, contact Fred 03 302 8888/ 021 434 603.

## METHVEN GOLF CLUB

### Ladies Results 4th October

**Irish Stableford:** Bev Isherwood 79 Irish Stableford.

Methven Supervalu Best Nett Of Day Jenny Senior 73.

**Nearest The Pins:** No4 Open Methven Travel Becky Hood, No6 Open, Bronze B 2nd Shot Anne-Marie Middleton, No13 Open Methven Pharmacy Bev Isherwood, No17 Open Primo Becky Hood, No14 Farmhouse Station Coffee Sharon Burrell-Smith.

**Two's And Nett Eagles:** Becky Hood x2, Jane Helmore, Heather Santy x2, Heather Middleton, Sandra Marr.

### 11th October

**Harrison Tray:** Jenny Senior and Jan Lane 95 - 23.5 - 71.5.

**Nearest The Pins:** No4 Open Farm House Coffee Jenny Senior, No6 Open Methven Travel Sharryn Bree, No13 Open Methven Four Square Emma Hampton, No17 Methven Pharmacy Jane Lane.

## We are hiring NOW!

Fill our available positions for:

- Labourers
- Agriculture
- Drivers
- Harvesters/Graders

Ashburton/ Methven based	Full training provided	Start rate
		\$23.50

Apply online:  
[www.personnelplacements.co.nz](http://www.personnelplacements.co.nz) or call  
Shelley 03 308 9675 or 022 424 5627



**AG JOBS**

**PERSONNEL**

PLACEMENTS LTD.

Employment Solutions

# Methven and Surrounds

# BAYLEYS



Boundary lines are indicative only

## Methven 37 Memorial Crescent

### Awaiting your vision

This prime real estate offers an amazing chance to build your dream home on a spacious 811sqm (approximately) plot. Found in Methven's Camrose Estate, this spot combines convenience and luxury seamlessly. Imagine waking up to Methven's stunning beauty, with the famous Ōpuke Thermal Pools and Spa just a short walk away.

bayleys.co.nz/**5521780**

811<sub>sqm</sub>

**Price by Negotiation**

**View** by appointment

**Fee Ensor** 021 705 014

fee.ensor@bayleys.co.nz

**WHALAN AND PARTNERS LTD, BAYLEYS,  
LICENSED UNDER THE REA ACT 2008**



## Methven Lots 1 to 11 Camrose Avenue

### Build your legacy

Discover the exclusive enclave of eleven never-before-seen sections in the highly sought-after Camrose subdivision. Located on the edge of Methven Township, these smaller sections range from 430sqm (more or less) to 735sqm (more or less) and offer the perfect opportunity to build your dream home in a prime location.

bayleys.co.nz/**5520961**

735<sub>sqm</sub>

**Price by Negotiation**

**View** by appointment

**Rosa Dekker** 0274 655 387

rosa.dekker@bayleys.co.nz

**Fee Ensor** 021 705 014

fee.ensor@bayleys.co.nz

**WHALAN AND PARTNERS LTD, BAYLEYS,  
LICENSED UNDER THE REA ACT 2008**



Boundary lines are indicative only

## Methven 43 Memorial Crescent

### Idyllic blank canvas

A wonderful opportunity is waiting for you with this spacious 806sqm (more or less) plot of land. Imagine waking up to the stunning beauty of Methven's surroundings, with the famous Ōpuke Thermal Pools and Spa just a short distance away. The appeal of these pools, along with the alpine atmosphere and beautiful views, creates a truly captivating experience.

bayleys.co.nz/**5521781**

806<sub>sqm</sub>

**Asking Price** \$189,000

**View** by appointment

**Fee Ensor** 021 705 014

fee.ensor@bayleys.co.nz

**WHALAN AND PARTNERS LTD, BAYLEYS,  
LICENSED UNDER THE REA ACT 2008**



**UNDER CONTRACT**

Boundary lines are indicative only

## Methven 10C Burbank Place

### Plenty of scope

Welcome to a fantastic real estate opportunity located at 10C Burbank, in the Camrose Estate subdivision. This property boasts a large 1,190sqm (more or less) section, which has a title already issued. The development levy has been paid, and there are consented plans, all stamped and ready to go. In fact, a builder is just waiting to start building straight away!

bayleys.co.nz/**5520163**

1,190<sub>sqm</sub>

**Price by Negotiation**

**View** by appointment

**Fee Ensor** 021 705 014

fee.ensor@bayleys.co.nz

**WHALAN AND PARTNERS LTD, BAYLEYS,  
LICENSED UNDER THE REA ACT 2008**





RayWhite

New Listing/Open Home

67 Racecourse Avenue, Methven

3 1 1 1

- Great holiday home
- Homely three bedroom property
- Modern kitchen with many upgrades
- Sunny living room, log fire & brand new heat pump
- Stylish bathroom with a large shower
- Three double bedrooms
- Spacious decking
- 1 & 1/2 garaging with laundry

**Deadline Sale**  
closing 2pm  
Thu 9 Nov 2023  
(unless sold prior)  
  
**View**  
Sat 11:30am -12:00pm  
Wed 25 Oct 5:30pm - 6:00pm

**Margaret Feiss**  
021 751 009

[rwashburton.co.nz/MVN30077](http://rwashburton.co.nz/MVN30077)  
Real Estate Mid Canterbury Property Ltd Licensed (REAA 2008)



RayWhite

10a Mackie Street, Methven

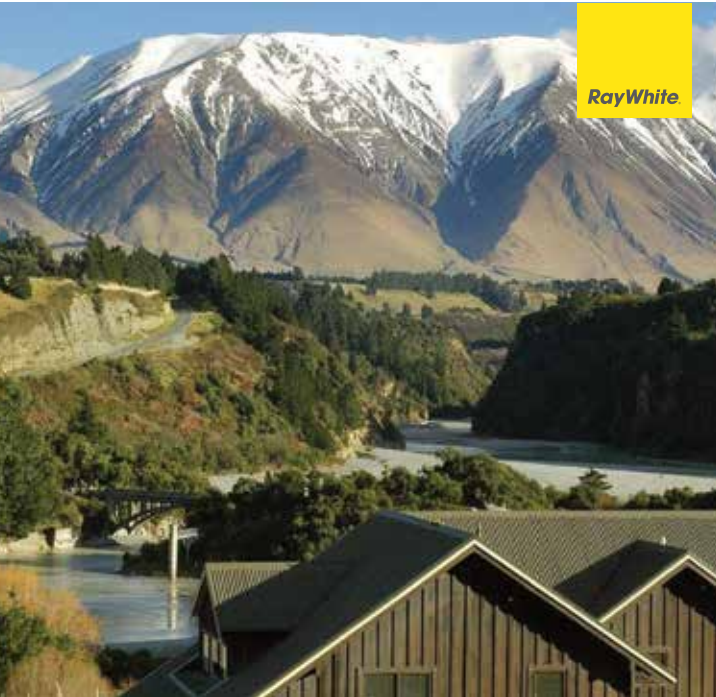
2 1 1

- Funky modern
- Located on a prime 737m2 section
- Tidy home with two spacious bedrooms
- Open plan kitchen living and dining with gas heating and air conditioning
- Abundance of off street parking
- Large laundry with plenty of storage
- May appeal to a first home buyer or investor

**For Sale**  
\$515,000  
  
**View**  
by appointment

**Trevor Goldsmith**  
027 225 5669

[rwashburton.co.nz/MVN30070](http://rwashburton.co.nz/MVN30070)  
Real Estate Mid Canterbury Property Ltd Licensed (REAA 2008)



RayWhite

Mt Hutt Lodge, Windwhistle

- Owners Retiring
- Sale includes restaurant & bar, 2 bedroom managers office with accommodation units (1x studio motel unit, 1 x 1 bedroom apartment)
- Freehold development land with resource consent owned by the managers
- Revenue generation opportunity by managing Timeshare businesses & casual accommodation

**For Sale**  
by negotiation  
  
**View**  
by appointment

**Trevor Goldsmith**  
027 225 5669

[rwashburton.co.nz/MVN30073](http://rwashburton.co.nz/MVN30073)  
Real Estate Mid Canterbury Property Ltd Licensed (REAA 2008)



RayWhite

39 Mcmillan Street, Methven

- Land and Building only
- Town centre corner site
- 731m2 section
- Building tenanted
- Zoned Business A
- Look towards a future investment

**Deadline Sale**  
closing 2pm  
Tue 31 Oct 2023  
(unless sold prior)  
plus GST (if any)  
  
**View**  
by appointment

**Margaret Feiss**  
021 751 009

[rwashburton.co.nz/MVN30076](http://rwashburton.co.nz/MVN30076)  
Real Estate Mid Canterbury Property Ltd Licensed (REAA 2008)



**Business Owner:**  
**Kim Miller**  
027 236 8627



**Margaret Feiss**  
Licensee Salesperson  
021 751 009



**Shirley Fitzgerald**  
Licensee Salesperson  
0272 201 528



**Trevor The Bald One**  
Licensee Salesperson  
027 225 5669

36 McMillan Street, Methven 03 303 3032  
[rwashburton.co.nz](http://rwashburton.co.nz)