

# SNOWFED

SINCE  
1986

METHVEN'S COMMUNITY NEWSPAPER - Operated by Mount Hutt College

Thursday 19 December 2019 Issue 48

Annie Jacobs



Colt Hill



Nikita Cavanagh and Genna Oates



Jessie Lill

Last Tuesday, Mount Hutt College hosted their Aspiring Performers Concert.

The concert was organised by Head of Music, Matthew Wood, and there was a talented display of the arts on offer.

Colt Hill started proceedings by playing the bagpipes as attendees arrived.

The Angeletta's (Leah Maw, Alice Miers, Rose Dargue, Charli Hellyer and Bella Casey-Solly), had the audience toe tapping and singing along to "Love Story" and "Walk Me Home."

A number of Mount Hutt College students are involved with the Big Little Theatre Company, and they performed a stirring, comical excerpt from Shakespeare's "Twelfth Night." Their command of the English language was exemplary!

Woodwind performers played beautifully on their clarinets, and flutes. There were also a number of pianists, and highland dancers.

All of the students gave a great performance showcasing what they have been working on during the year.



The Angelettas



Isla Miers and Leah Maw



Janre Lim



Jess Bleach



## It's all about community...

Snowfed is proudly printed locally by Heartland Design & Print.

285 Havelock Street, Ashburton | 03 308 9160 | heartlandprint.co.nz

**HEARTLAND**  
design & print

# Methven and Surrounds

**BAYLEYS**

**Methven** 39 Morgan Street

## Live, rent, work or develop

So many options for the lucky new owners of this three bedroom, permanent material, character home conveniently located close to schools, shops and cafes in Methven township.

[bayleys.co.nz/5511311](https://bayleys.co.nz/5511311)

3 1 1 2

**Deadline Sale** (unless sold prior)  
2pm, Mon 20 Jan 2020

**View** by appointment

**Fee Ensor** 021 705 014

[fee.ensor@bayleys.co.nz](mailto:fee.ensor@bayleys.co.nz)

WHALAN AND PARTNERS LTD, BAYLEYS,  
LICENSED UNDER THE REA ACT 2008

## FEE ENSOR WORKING FOR YOU, WITH YOU

If you are looking to sell your property, Fee has the local knowledge and resources to achieve a successful sale for you.

**Talk to Fee for a free appraisal and together we'll help you on your journey.**



**Fee Ensor**

021 705 014

[fee.ensor@bayleys.co.nz](mailto:fee.ensor@bayleys.co.nz)

WHALAN AND PARTNERS LTD, BAYLEYS,  
LICENSED UNDER THE REA ACT 2008

**BAYLEYS**

ALTOGETHER BETTER

# MERRY CHRISTMAS AND A HAPPY NEW YEAR

Christmas is all about family, friends and a comfortable home filled with good cheer in which to enjoy them all.

As your local Residential and Lifestyle Specialist I wish you and your family all of this for the holiday season.

**Should 2020 bring you a change of address please contact me so I can assist you.**

**Fee Ensor**

021 705 014

[fee.ensor@bayleys.co.nz](mailto:fee.ensor@bayleys.co.nz)

WHALAN AND PARTNERS LTD, BAYLEYS,  
LICENSED UNDER THE REA ACT 2008

**BAYLEYS**



# PUKA RATAKA

## COMMUNITY

*This section is for community support groups. For sports groups and clubs, contact your local group.*

### MONDAY

**Housie** at Methven House 1.30pm.  
All members of the community welcome

### TUESDAY

**Methven Public Library** 2pm-4pm  
**Methven Museum** 2pm-4pm

### FRIDAY

**Methven Public Library** 2pm-4pm  
**Methven Museum** 2pm-4pm

### SECOND AND FOURTH FRIDAY

#### EACH MONTH:

**Plunket Coffee and Chat** 10am-12pm  
Plunket Rooms, Main Street

### SATURDAY

**AA Meetings** 6pm Methven Primary School  
**Methven Public Library** 10am-12pm

*Trotts Garden, open for free until the end of the year, Racecourse Rd, Ashburton.*

## DECEMBER

- 20 Methven Community Pool Christmas Pool Party
- 22 Community Christmas Party 2-5pm
- 22 Community Carols 7pm The Square
- 30 Methven Hot Rod & Classic Car Show, 10-3pm Methven Town Centre

## JANUARY

- 5-10 Methven Summer School

## Great Space Storage

**Clean, Dry Containers  
& Sheds from  
\$120 per Month**

9/11 Line Road, Methven  
**Ph 0274 766 835 anytime**

### Snowfed contact details:

Ph. 302 8437 ext 3  
[www.snowfed.co.nz](http://www.snowfed.co.nz)  
[letterbox@snowfed.co.nz](mailto:letterbox@snowfed.co.nz)  
**Methven Community Website**  
[www.methvenmthutt.co.nz](http://www.methvenmthutt.co.nz)

Disclaimer: The opinions, beliefs and viewpoints expressed by the various authors of Snowfed do not necessarily reflect the opinions, beliefs and viewpoints of Snowfed and Mount Hutt College.

All articles, photos and artwork produced by Snowfed remain property of Snowfed and may not be used in any other publication without consent from the Snowfed Editor: Julie Clements.

## Combined Churches Christmas Services

### Christmas Eve (24th Dec)

6:30pm Mt Hutt Elim Church  
8:30pm St Johns Presbyterian  
8:30pm OLS Catholic church carols followed by Mass at 9pm  
9:30pm All Saints Anglican

### Christmas Day

9:30am All Saints Anglican  
9:30am St Johns Presbyterian



### Church Contacts

All Saints Anglican - Sue Jackson - 3029065  
Our Lady of the Snows (OLS) - Susan Dickson - 3028236  
Mt Hutt Elim Church - Ps Mark Taylor - 3029698  
St Johns Presbyterian Church - Rev Aarii Taimataora 3028151



### MANAGE YOUR DATA WITH EASE

- Yield mapping
- Trimble software
- Independent consultancy
- Smart soil surveying
- Smart fert
- Variable rate application maps
- Soil moisture probes
- Weather stations
- Effluent
- Milk monitoring
- Command and control



CALL AGRI OPTICS NZ NOW FOR FURTHER DETAILS.

YOUR PRECISION  
AGRICULTURE  
SPECIALISTS

AquaCheck  
SOIL MOISTURE MANAGEMENT

HALO  
FARM SYSTEMS

Trimble

P 0800 482 682 | E [info@agrioptics.co.nz](mailto:info@agrioptics.co.nz) | [www.agrioptics.co.nz](http://www.agrioptics.co.nz)



## Philip Wareing Ltd

Line Road, Methven  
Phone 302 8616  
Fax 302 9657  
[philipwareingltd@xtra.co.nz](mailto:philipwareingltd@xtra.co.nz)



- Lime & Super Spreading
- Precision Nitrogen Sowing
- Hay & Straw Cartage
- Bulk Grain Storage
- Agricultural Spraying
- Log Cartage
- Stock Cartage
- Container Cartage
- Firewood Supplies
- Shingle supplies
- Daily Freight
- Swinglifting
- Cool Storage
- Silo Storage
- Grain Cartage

Philip Wareing 027 433 4897  
Simon Wareing 027 228 9448  
Murray Lumsden 027 433 4538

Gary Sheridan 027 672 3995  
Grant Kenny 027 414 2886  
Ian McLean 027 433 4545

Mark Wareing 027 433 4539  
Matthew Oates 027 433 4541  
Dan Kennedy 027 432 0898

# Piwakawaka Big Day Out!



*If you were out and about in town on Wednesday 11 December you may have seen the Year 3 and 4 students alongside some Teddy Bear friends.*

Discovery Bear has some visitors popping into Methven over the holidays and wasn't sure how to keep them entertained. The Piwakawaka students wanted to help him out.

A desperate plea was made to the students to help build some form of transportation, make some (sunsmart) clothes, decide on a healthy meal and map out places of interest around town.

The children were very creative in their designs and should be proud of what they achieved.

*A HUGE thank you to all the parents who helped during the design process and to those who helped navigate, mend broken trollies and encourage everyone on our trip.*



I.T. Question? Computer Issue?  
**THINK DCS – A.S.A.P**



DYNAMIC COMPUTER SERVICES

- Local people and local support
- IT Services & Support
- Products and services without the confusing technobabble

**CALL NOW: 03 307 8501**

Member of BNI Ashburton

131 Alford Forest Road, Ashburton  
E: [info@dynamiccomputers.co.nz](mailto:info@dynamiccomputers.co.nz)  
Office Hours: 9:00am - 5:30pm



## METHVEN PRIMARY SCHOOL - 2019 END OF YEAR ASSEMBLY

### Special Awards

#### Sports Cups

MPS Excellence in Swimming - **Chloe Lowe**  
 MPS Excellence in Athletics - **Gishbert Pangilinan**  
 Methven Primary Triathlon Fastest Male - **William Brown**  
 (Donated by Brown Family)  
 Methven Primary Triathlon Fastest Female - **Chloe Lowe**  
 (Donated by Brown Family)

#### Academic Cups

MPS Robinson Cup for Public Speaking - **Harriet Brown**  
 MPS Excellence in English - **Jordan Oates & Emma Armour**  
 (Donated by J. Don)  
 MPS Excellence in Mathematics - **Chloe Lowe**  
 (Donation by G. Smith)

#### Cultural Cups

Music Scholarship (Donated by Fiona Maw) - **Mac Smith**  
 Boys Award for Dedication and Commitment in Cultural Activities  
 (Donated by Isherwood Family) - **Cordall Keepa**  
 Girls Award for Dedication and Commitment in Cultural Activities  
 (Donated by Isherwood Family) - **Jeziel Lopez**  
 The Arts (Donated by Hannah Kidd) - **Emma Armour**

### STAR Awards

MPS STAR -  
 MPS STAR -  
 MPS STAR -  
 MPS STAR -

STAR Awards  
 Sporting  
 Trustworthy  
 Accepting  
 Responsible

Student  
**William Brown**  
**Lucy Farrell**  
**Georgia Monk**  
**Jordan Oates**

### Stellar Awards

MPS Highest Achieving Male Athlete - School based disciplines  
 Swimming, X Country & Athletics (Donated by Whitehead Family)  
**William Brown**  
 MPS Highest Achieving Female Athlete - School based disciplines  
 Swimming, X Country & Athletics (Donated by Whitehead Family)

#### Chloe Lowe

MPS Overall Academic Excellence - **Harriet Brown**  
 MPS STAR - Male - **Jamie King**  
 MPS STAR - Female - **Isabella Marr**

### Winning House

MPS House Trophy - **Whero**  
 (Donated by Jack & Rosemary Taggart)

Team  
 Mahuri

Piwakawaka

Four

### Classroom STAR Awards

Mahuri S  
 Mahuri B  
 Mahuri M  
 Mahuri I  
 Mahuri K  
 Piwakawaka F  
 Piwakawaka P  
 Piwakawaka L  
 Piwakawaka O  
 Year 5 Girl  
 Year 5 Boy

Student

**Aleighta Power**  
**Scarlett Meadows**  
**Presley Machin**  
**Olly King**  
**Emily Glass**  
**Adam Walker**  
**Freya Keane**  
**Amelia Riddle**  
**Annalise King**  
**Ella Quinn**  
**Ben Piper**



**MOUNTAINVIEW**  
**AGRONOMY**

A DIVISION OF MOLLOY AGRICULTURE LIMITED



**ADVISE | SUPPLY | APPLY | RECYCLE**

FULL, INDEPENDENT AGRONOMY ADVICE  
 NUTRIENT BUDGETS

AGRI-CHEMICAL AND SEED SUPPLIER  
 RAVENSDOWN 'FLOWFERT N' SUPPLIER

CROP & PASTURE SPRAYING

AGRECOVERY COLLECTION SITE

SYNGENTA NOZZLE RETAILER

BATEMAN SPRAYERS SALES SERVICE PARTS



**OFFICE: 03 302 8098**

**BOOK ONLINE: [www.molloyag.co.nz](http://www.molloyag.co.nz)**

DAVID MOLLOY 0274 362 441 | DAVID MANGIN 0274 802 216 | COLIN WOOLSEY 0274 362 448

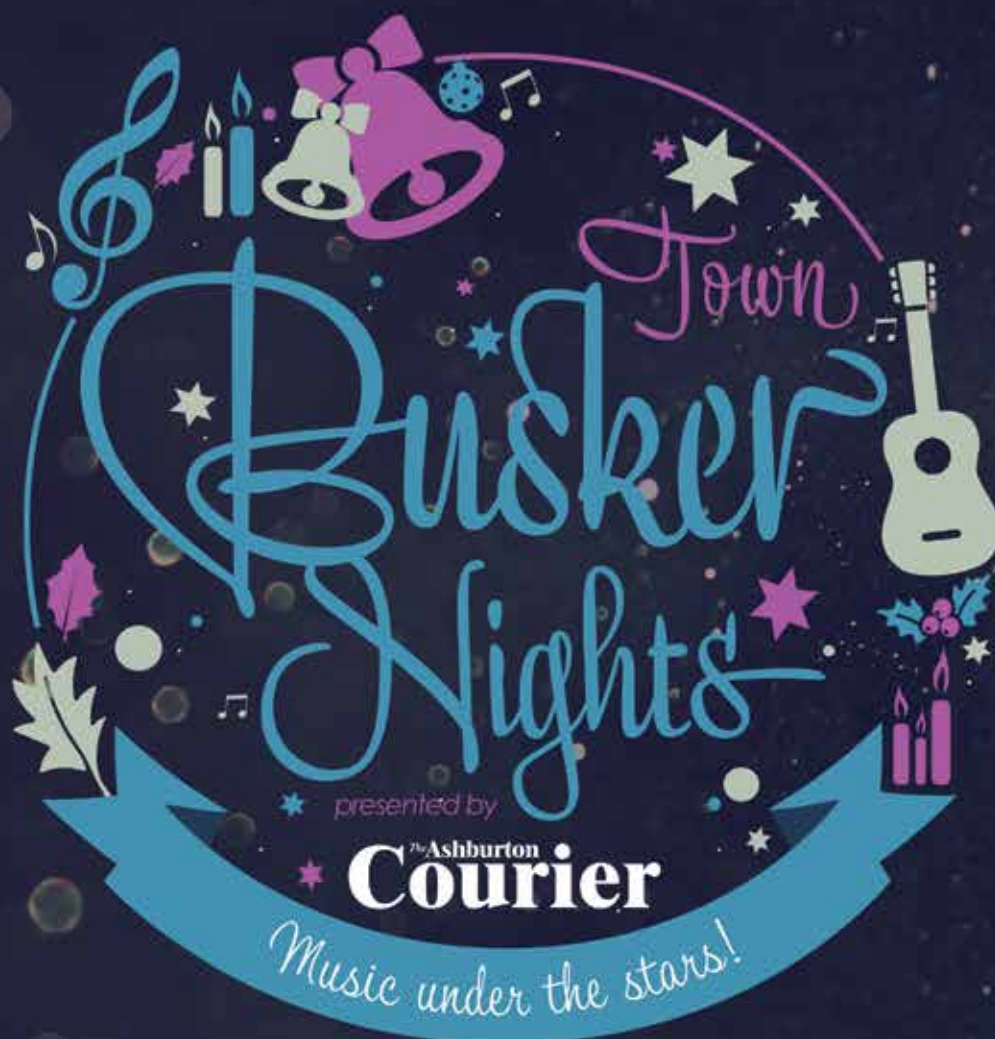
**MOUNTAINVIEW AGRONOMY**

GARY RACKHAM 0274 362 459

GREGOR ROBERTSON 0274 362 438

GEMMA OLIVER 0274 324 434

MARTINA PADRUUT 0272 863 489



[nightsoflights.nz](http://nightsoflights.nz)



**Friday 20 December**

Feel the Christmas joy and sing along to all your favourites at our two Buskers Nights. Come along to Baring Square East on Friday 20 December from 6:30pm and hear our home grown talent as they share their music with you.

  
**Ashburton**  
DISTRICT COUNCIL



# Christmas Lights at Frank's

*A regular fixture in Methven at Christmas time is visiting Frank Sandy's garden to see the Christmas lights.*

Last year, (we thought), was to be the last year of this great event, however, Frank has advised that his garden will again be open.

The display will be smaller than previous year's, but just as spectacular

as always. Head out to Hobbs Road after dark and you will see Frank's place all lit up.

*The garden will be open from Wednesday 18 December for eight nights.*



## "Professional Earthmovers Shaping Your World"



**Safety. Environment. Partnership.  
Innovation. Excellence.**



### CORE SERVICES:

- DairyNZ accredited Effluent Pond Design and Construction
- Pond Construction and Irrigation Development
- Hedge and Stump Removal
- Farm Conversions
- Dairy Tracks - Lime or Gravel
- Pump Hire
- Wells and Galleries
- Bulk Earthworks
- Subdivisions
- Site Works
- Tree Shear
- Transportation



P: 03 308 0287 or 027 483 2712 | 192 Racecourse Rd, Ashburton  
www.granthoodcontracting.co.nz



**advancedfeed**

## Your Locally Owned & Operated Feed Mill

- Customised Dairy Pellets
- Customised Technical Feed Blends
- Rolled Wheat or Rolled Barley
- Rising Two Year Old Weight Gain Pellet
- Sheep Pellets or Nuts (All Stock Classes)
- Deer Pellets or Nuts (All Stock Classes)
- Multifeed Pellets (General Purpose)



**25kg, Bulk Bag 800kg  
or Bulk Unit Delivery**

**Made to order**

**Customised formulations to meet individual  
farm requirements**

To understand your options, talk to Penny Lavender (Nutrition Specialist)

Phone: 03 302 8211 Mobile: 027 777 8806 Email: [penny@advancedfeed.co.nz](mailto:penny@advancedfeed.co.nz)

Advanced Feed, 360 Barkers Road, Methven



# Exercise-associated hyponatremia

What is exercise-associated hyponatremia (EAH)?

A rare but preventable condition of low serum sodium during exercise. Normal levels of sodium are 135 – 145mmol/L, mild hyponatremia <135mmol/L, moderate hyponatraemia 125 – 129mmol/L, severe hyponatremia <120mmol/L.

What are the symptoms?

Mild EAH: dizziness, lightheaded, fatigue, bloating, puffiness, mild nausea.

Moderate EAH: headache, vomiting, confusion, mood changes, dyspnoea, phantom running.

Severe EAH: convulsions, coma, seizures, frothy sputum, and worst-case scenario - death.

What causes it?

It can occur due to a range of overlapping factors, including:

- Repeat offender = drinking water or other hypotonic fluids in excess. Hypotonic fluids are those that have a lower concentration of electrolytes compared to those within the body.
- Some people may have suppression of the hormone arginine vasopressin (AVP) which is a key regulator in renal water excretion. If AVP is not working appropriately, then water retention occurs. Water retention + excessive water intake = diluted serum sodium.

- Higher sweat sodium losses. This is highly variable between individuals. Some people have very salty sweat, the kind where you are left with gritty skin, white streaks on the side of your face/neck and can taste it when you lick your lips. Other people less so. Higher losses of sodium through sweat may contribute to EAH.

- Glycogen metabolism (the stored form of glucose in your liver and muscles). When we metabolise this during exercise, the by-product of this reaction is water. This water is then released within the body and may contribute to dilution of serum sodium.

- Prolonged sweating, i.e. the longer the event, the greater the risk.

- Consuming a low sodium diet.

Who is at greatest risk of EAH?

- Anyone participating in endurance events e.g. triathlons, marathons, ultra-marathons, etc.
- People drinking copious amounts of fluid exceeding renal water excretion.
- People with very low body mass or very high body mass.
- First-timers, slower pace/longer race times (>4 hours).
- Females are more at risk compared with males.

Top tips:

- More water does not equal better, in can be dangerous if consumed excessively. Mix up water consumption with electrolytes/sports drinks in endurance events.
- Fluid needs are individual. Sports dietitians can work with you to help calculate your specific sweat rate and race-specific fluid needs.
- It's important to keep in mind that you also want to stay adequately hydrated, aiming to keep body weight change <2% (i.e. fluid loss). More than this will be detrimental to sports performance. Hydration is a constant balancing act.
- Athletes need to have their own fluid plan matching their specific race. It's key to consider aid stations, what the athlete can carry, individual sweat rate, race day conditions etc.
- Sodium helps drink palatability and sodium replacement is useful for endurance athletes.
- I typically recommend athletes consume electrolytes/sports drink for activities exceeding 60-90 minutes. For ultra-endurance events it is important to consider specific sodium replacement for some athletes (e.g. ironman).

References

- Hew-Butler T, Loi V, Pani A and Rosner MH (2017) Exercise Associated Hyponatremia: 2017 Update. *Front. Med.* 4:21. doi: 10.3389/fmed.2017.00021
- Burke L, Deakin V (2015). *Clinical Sports Nutrition* (5th edition). Australia: McGraw-Hill Education.



Cushla Holdaway  
NZ Registered Dietitian  
BSc Human Nutrition, MDiet  
(University of Otago)



## YEAR ROUND. JOB DONE.

f JacksonHolmesContracting  
YouTube SimSj4tiZ5I



Feed Trading  
Baling & Chopping  
Cultivation & Drilling

Fodder Beet Planting  
Manure & Effluent Spreading  
Cartage



Andrew Jackson  
027 439 3387



Todd Holmes  
027 279 8926



Bruce Lilley  
027 553 3085



Harry Jackson  
027 748 9599



David Stafford  
027 557 0530

CALL US TODAY TO DISCUSS YOUR REQUIREMENTS!

03 303 0872  
www.jacksonholmes.co.nz



jacksonholmes

CULTIVATION | DRILLING | FORAGE HARVESTING | BALING | WRAPPING | MOWING | CARTAGE | WEIGHING/DRY MATTER TESTING

  
Shaun LIGHTFOOT  
Painting & Decorating

Would like to wish all of our customers, suppliers and everyone in Methven and the surrounding areas a very

**Merry Christmas & Happy New Year**

Thanks for your continuing support from  
Shaun and Dawn

Call 021 040 7888 or  
Email [info@shaunlightfoot.co.nz](mailto:info@shaunlightfoot.co.nz)  
for a Free Appraisal and Quotation.



## MT SOMERS



### CHARACTER PLUS

This three double bedroom character home has been well renovated and has so much to offer. Open plan living spaces - kitchen/dining/lounge with fireplace, heat pump and coal range on wetback, the home is warm and cosy in the winter and cool in the summer. Additional features:

- Section is 1,012m<sup>2</sup>
- Double carport
- Oversized workshop
- Greenhouses
- Main bathroom - bath, separate shower, toilet
- Separate laundry with shower
- Garden shed, wood shed

And so much more, call us today to arrange a viewing. **Price guide: low to mid \$300,000's.**

**Deadline sale (unless sold prior) ends 17 December 2019 at 2:00pm.**

**65 Pattons Road, Mt Somers**

## METHVEN



### CENTRAL APARTMENTS - METHVEN QUALITY ACCOMMODATION

Located in the centre of Methven, the Central Apartments are the newest Luxury block of 6 Apartments to be built in Methven. Each of the six apartments have quality furnishings. All apartments come with an open plan lounge and kitchen with a high standard of fixtures and fittings. Each features it's own private deck with magnificent views of Mt Hutt and the surrounding mountain ranges. All six apartments comprise two bedrooms with a mix of doubles or singles for flexibility. With the option to rent as a one bedroom apartment. There are different bathroom configurations with baths, spas and showers. Plenty of on site parking. **\$1,750,000 + GST IF ANY**

**7 Methven Chertsey Road**

## METHVEN



### THE PERFECT PACKAGE

This is a classic home been thoughtfully designed to maximise space and comfortable living. With four double bedrooms, a family bathroom and an ensuite, the home is well appointed and suited to a range of lifestyles. Features include a separate lounge, open plan living, kitchen with butlers pantry and a master suite (walk in wardrobe and ensuite). Along with double garage, separate laundry, built in wardrobes in all bedrooms, double-door fridge space and so much more. Currently being built by Stonewood Homes, interior design assisted by Country by Design. Stop into Professionals office to check out the colour palette and floor plan. Buy now to be able to have input into the finer details or a great opportunity to have a brand-new home with all the details taken care of. **Price guide: \$600,000's**

**Deadline Sale closes 21 February 2020 at 3:00pm unless sold prior**

**29 Camrose Avenue**

## METHVEN



### CAMROSE ESTATE - STAGE THREE NOW AVAILABLE

Great location close to town with a large reserve area close by for your enjoyment. This well designed and managed subdivision offers that something extra and is the perfect place for your new home. Section sizes from 725m<sup>2</sup> to 1745m<sup>2</sup>. These sections are selling now. **Priced from only \$160,000**

## METHVEN



### UNDER OFFER

### JUMP ON THE LADDER!

On offer is a two bedroom home that has a large open plan lounge with good indoor /outdoor flow through a ranch slider into a private courtyard. The kitchen has been updated in the last 10 years and comes with a large pantry. Both rooms are generous doubles with double built in wardrobes. There is a separate toilet and a separate laundry. **\$298,000**

**1 Colcord Place**

## BARRHILL



### UNIQUE TRANQUIL PARADISE

Come and explore this idyllic piece of paradise in Barrhill Village which is in the heart of Mid Canterbury. If you are wanting an escape nestled along the Rakaia River, this is the section for you, build your country home in this tranquil village. This large section is 2023m<sup>2</sup> with the avenue which is lined with beautiful oak trees, sweeping views to countryside and through to the Southern Alps. **\$165,000**

**10 Oak Avenue**

## LAKE COLERIDGE



### IN THE "HART" OF LAKE COLERIDGE

Don't miss this opportunity to be able to build your holiday home surrounded by stunning mountains and high-country scenery. This 924m<sup>2</sup> section is located on the road to the hall, very close to the tennis and basketball court and play ground. Local activities include skiing, fishing, hiking, mountain biking, golf, boating, horse riding, hunting, bird watching and relaxing. **\$119,000 5a Hart Place**

## METHVEN



Located in the heart of Methven Village, the alpine region's ultimate commercial precinct, Methven Business Hub is a collaborative space purpose built for professional services.

Providing a fully serviced and contemporary work space, Methven Business Hub is the perfect location to base your business or remote office without the need to invest in a commercial office lease. Closely aligned with Methven's sense of community spirit, the space is to encourage a supportive and collaborative approach for businesses looking for a commercial office in Methven. Call Maree for further information.

**Merry Christmas and A Happy New Year from the team at Professionals.**

**Thank you for supporting Birthright with the gifts left under the Christmas Tree, we are sure that it will bring smiles to the faces of many children.**

**We are working over the holidays, so give us a call if you require any assistance with real estate.**



## WINDWHISTLE



### FORESTRY OPPORTUNITY

This 2 ha forestry block of established 24 year old Pine and Blue Gum trees is an opportunity waiting for the right buyer. Work has been completed by the current owners to clear wind blown trees and maintain the property. Wind whistle is a small rural community very close to the Rakaia Gorge and only an hour from Christchurch. This block has road frontage on to the Highway 72 Inland Scenic Route. **\$160,000 611 Wind whistle Road**

## METHVEN



### BRINKLEY RESORT

Each unit consists of a one bedroom studio apartment with spa bath, kitchen and own entrance plus a two bedroom fully contained apartment. Both units have access to a laundry in the entrance way. These units are fully managed while you aren't there and you can enjoy the income from these. Ongoing maintenance is carried out by the Property Manager. **From \$125,000 + GST (if any)**



Maree Firth  
Principal/  
Property  
Consultant  
027 542 1364



Rosa Dekker  
Property  
Consultant  
027 465 5387

Sam Gregory  
Property  
Manager  
027 886 0179



Amanda Pannett  
Office  
Administrator  
03 303 3093





**Methven  
Community  
Christmas  
carol  
service**

Sunday 22nd  
December 7:00pm  
The Square  
(Outside Medical Centre)

Sing along to carols and enjoy a  
preformance by the Fascinating  
Ladies Choir.

Followed by tea & Coffee at Mt Hutt Memorial Hall.  
Wet weather venue: Mt Hutt Memorial Hall

This community event is organised by  
the Combined Churches of Methven

Made with PosterMyWall.com

## Hot Rods are coming!

The hot rods and classic cars are once again coming to Methven. There will be about 150 hot rods, custom cars & bikes arriving on 30th December 2019 for a car show and some will be staying in Methven for a few days.

The public can view all the cars on display around the Blue Pub carpark on Saturday 30th December from 10am – 3pm. Entry is \$5 Adult \$2 children. Proceeds will be going to the Methven Volunteer Fire Brigade who help us run the day.

Any enquiries ring Gerard McCloy 027 417 2067 or email: [g.a.mccloy@xtra.co.nz](mailto:g.a.mccloy@xtra.co.nz) or check out our Facebook page 'Rods at Methven.'



## Methven Panel and Paint



### Methven Panel and Paint for all your Panel and Paint needs

Insurance Work - Truck Repairs and Repaints  
Farm Machinery - Fleet Work  
Caravans - Motorhomes  
Windscreen Replacement - Chassis Straightening  
Stone Chip Repairs - Rust Removal - Painting

Loan Cars available by arrangement

**Tel: 03 303 3148**  
**A/Hrs: Matt 027 711 7117**  
**47 Line Road, Methven**  
**Email: [Methvenp.p@Xtra.co.nz](mailto:Methvenp.p@Xtra.co.nz)**



We wish you all a great Christmas and all the best for the New Year

We will be closed for the Statutory days plus Friday December 27th and Friday January 3rd.

Dixon Machinery & Dieseltech

**DIXON**  
**MACHINERY**

# Want to help?

Annie Jacobs

*Methven Reserve board met last week for their last meeting of the year.*

The Board are a sub committee of Ashburton District Council and work to their rules. The Reserve Board are responsible for keeping the Methven Domain up to scratch, liaise with the twelve resident sports clubs and do a really fine job of it!

Their work also involves trimming trees, maintenance of the playground and keeping the place generally tidy. Anthony Holmes and Mike Gray are responsible for keeping the grounds mown. Stuart Robinson had previously given ten years of dedicated lawn mowing years, but sadly passed away last Christmas. A recent addition was a much-needed drinking fountain, installed beside the Tennis Club.

During the last three years, there have been some very successful sports tournaments held at the Domain, and a caravan club weekend attended by 60 caravans. The is all brilliant for the Methven community and businesses.

If you'd like to help out, contact Colin Maw 027 486 0554.

*Many thanks to these members of our community who give freely of their time and expertise, and help keep our town looking amazing!*



**Diamond Painters and Decorators Ltd**

Quality Interior and exterior painting and decorating

- ◆ Wall papering
- ◆ Airless spraying
- ◆ Water blasting
- ◆ Roof painting
- ◆ Residential and small commercial
- ◆ Free no obligation quotes

Duncan M: 027 370 2453 | H: 307 8243  
E: diamondpaintersdecorators@gmail.com

## CARTER'S

**Free fit & balance on all passenger tyres for the months of June & July only**

As NZ's largest independent tyre dealer, we pride ourselves on providing unbiased, expert advice, products & service for all your needs:

- Car Tyres
- Truck Tyres
- Tractor Tyres
- Punctures
- Wheels
- Batteries
- Tyre Vulcanising
- On farm servicing

**24HR CALLOUT**

**MID CANTERBURY**

**Chris Gottermeyer | 022 317 5025**  
9 Line Road, Methven

0800 4 CARTERS | [www.carterstyres.co.nz](http://www.carterstyres.co.nz)



100% NEW ZEALAND OWNED & OPERATED



Thinking seed?  
Call today!



## Heartland Seeds



Your seed & agronomy specialist...

- Pastoral seed sales, access to all varieties
- Spot market purchases of feed & milling grain
- Forward contracting of all grains
- Ag chemical supply services
- Domestic & international sales - multiplication contracts for peas & Asian brassicas

John Fulton 027 489 4504 | 03 303 0856 | [john@heartlandseeds.co.nz](mailto:john@heartlandseeds.co.nz)

## Your Digital TV Experts

- Aerial / Dish installations and repairs
- Prewire of new homes
- TV wall mounting
- Cell phone aerials
- Home theatre installation

*Servicing*

Ashburton - Geraldine  
Methven - Rakaia

and everywhere in between

## ASHBURTON TV & AUDIO

PH. 03 308 7332 / 027 277 1062  
[ashburtontvandaudio.co.nz](http://ashburtontvandaudio.co.nz)

## METHVEN TYRE & HIRE



Passenger Tyres • Truck Tyres  
Agricultural Tyres • Punctures and Repairs • Wheels • Tyre Vulcanising

Hireage of equipment for Firewood, Gardening, Transporting, Moving House, Entertainment and Functions!

**FULL RANGE OF ASHBURTON U-HIRE EQUIPMENT AVAILABLE THROUGH METHVEN TYRE & HIRE**

**24 CALL OUT SERVICE HOUR AVAILABLE**

03 302 8411  
24 Methven  
Chertsey Rd  
METHVEN

**NEUMANN TYRES**

**ASHBURTON U-HIRE**



# Postcards from abroad

with Jo Brennan

## Retrospective Travel Log From Jaipur

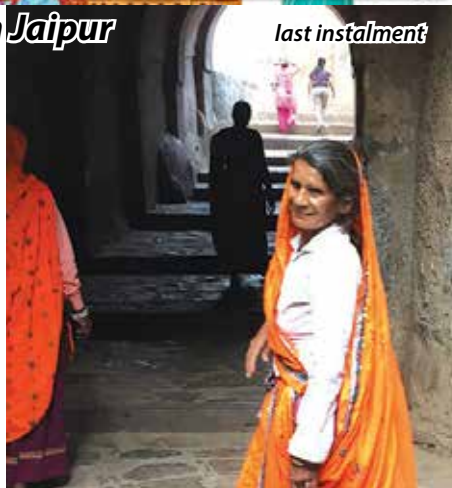
*Yep, another long drive. Yep, this time the brother was invited to join us and yep, again I was concerned as two females to two males ratio was not ideal, but we ended up having a great conversation and a lot of chat about New Zealand cricket (which I know nothing about).*

So it was an enjoyable ride through to the pink city of Jaipur. Super views of rural life and the very basic agricultural practices still taking place, but somehow very peaceful and reassuring that ancient skills have not been lost.



Shopping had not been very successful as mostly you had to go into shops the tuktuk driver took you to or enter into darkly lit places with no female staff. I managed to get a few things, but was eagerly anticipating the silver markets famous in Jaipur. I did get a few pieces but mainly the shops and stalls were catering for bulk purchases and I struggled to get the variety I'd hoped for. Prices were great when I did. I always buy fabrics to use on return to New Zealand and managed to get a few bits that I love displaying on my table, couch or wall. Great, useful souvenirs.

Elephantastic is a must do in Jaipur. A refuge of rescued elephants that you can spend



the day with, in our case two people to one elephant (no more than 4). Washing, feeding and spending time with our new friend was great and again a bucket list item which I had researched. I felt the operation met all animal welfare requirements and after the experience felt reasonably confident that the money was going towards ongoing assistance to save elephants from the tourist rides up to the forts and the circus animals from around Northern India. Elephants are rotated so only deal with visitors every fourth day. There were loads of facilities and care shown and the owner seemed sincere. I would not do this in Thailand and hope that my judgement here was on the mark.

We visited the Amber Fort which was another fantastic site and climbed to a monkey temple (not a good use of time). I would have liked to have a little more time in this beautiful town. The brightly coloured saris and a mainly Muslim based population made it feel more like the Middle East than India. A trip to the desert would have been great if we'd had more time.

Our final leg was a flight back to Delhi and this time we based ourselves in a posh place out at the airport with a pool, room service etc. A really great way to deprime ourselves before the flights home and to eat a more European diet. The gin wasn't bad either! Note-Alcohol is not readily available especially for females. Bring your duty free.

Hint- we went vegetarian while travelling. Food is very cheap even in a good restaurant and nothing like the Indian food we are served here in New Zealand. No tummy problems the whole time!

Scrub your shoes down using the disposable toothpaste and brush before heading home or better still chuck as the biosecurity risks from India are high, (animal faeces everywhere!)

The shower caps in hotels are great for shoes when packing.

If travelling Air India (which was great) be prepared to share travellers home cooked meals or at least the smells of them for the

last instalment



18 - 31 DECEMBER



Vanessa Walker 19

Lani McLeod

Ella Docherty 16

Jordan Magson 12

Justine Magson

Sonia Cullen

Iosefa Fagalima 9

Holly Braidwood 11

Michael Kemp

Katrin Geilfuss

Emily Watson 14

Nathan Thomas 40

Lynne Markham

Tilly Johnson 11

Kerry Fitzsimons 31

Tracey Clemett

Josephine Tanner

Sadie

Blake Wightman 4

Caleb Barr 13

Simon Wareing 46

Hunter Dirks 10

Adam Vaughan 36

Beau Ballagh 7

Abi Cavanagh 14

Luke Ruddenklau 14

Kerri Blackburn

**CONGRATULATIONS!**

**VANESSA WALKER**

POP INTO METHVEN 4 SQUARE  
SUPERMARKET FOR YOUR SURPRISE!

whole trip. We were offered loads of little delights.

On our return trip we felt more relaxed and in tune with this amazing culture. The ups and downs of this trip made it a rollercoaster of experiences but I am keen to return to visit the South. Not sure daughter number one will accompany me? However, this country is a must see if only to take stock of how lucky we are in this stunning place we call home.

**Kia kaha, travel intrepidly at least once!**

*Many thanks Jo, for sharing your travel adventures with us all.*



## ***We want to hear from you...***

Snowfed, now almost 34 years old, is in the privileged position of having a growing readership and thanks to our very supportive advertisers, the newspaper remains free to our readers.

As part of a review of the Snowfed, we would like feedback on how the newspaper can better serve our community, via the questions below.

For example, Snowfed rates have recently changed and we now offer a special rate for our community charities and not for profit organisations. We are also looking at how we can bring you the Snowfed in colour.

We are out and about covering events and introducing new businesses, and because we can't be everywhere, we welcome submissions of your stories and photos; information about upcoming events, special dates, awards, fundraisers, adventures and achievements... we want to hear from you!

***Answer the questions below, return it to Snowfed and go into a prize draw for \$25 voucher at the local business of your choice:***

***Email - [letterbox@snowfed.co.nz](mailto:letterbox@snowfed.co.nz)***

***Post - P.O. Box 58, Methven, 7745***

***The winner will be drawn in January and announced in Issue 3, Thursday 30th January 2020.***

What do you enjoy most about Snowfed?

What else would you like to see in the Snowfed?

Any other suggestions?

Your Name:

Your Email:

Your Phone:



## FOR SALE Brand New JAC Forklift



### JAC Forklift

- 2.5 ton - Container mast 4.8m
- Side shift
- Independent fork shift (4 lever control)
- Isuzu 2.4 Diesel engine C240
- Solid tyres
- Good vision, clear roof, fan, LED lights
- Warranty in Ashburton

**\$28,700.00 plus gst**

**EXTREMELY GOOD VALUE!!**

**Contact Kevin Pooke at Elquip Ltd  
11 Tuarangi Rd, Ashburton  
027 479 2350**

# High Country Fete Winners

*Julie and I would like to thank the Mid-Canterbury area this years support for the High Country Fete. It was our largest year yet and it keeps growing.*

Special thanks to our sponsors Hokonui Radio, Jackson Holmes, Skitime, Ruralco, Semi Arch Permanent Eyebrow Styling, Spirit Magazine and the Ashburton District Council.

We could not have achieved this if it were not the help of Wanda Campbell, Ankit Singh, James and Huia Campbell, Jennifer Laylor, Stalky and Mary Jones. Thank you to the talented entertainers, Vicky Smith, Kirsty McAuliffe with the Polkadots and Amelia James.

To Lew Shaw and Ronnie Smith who go above and beyond for our community, silently whittling away at the things that need attending to around this area. We are all very grateful. Charlie Hill thank you.

We will be back for 2020. Date is yet to be confirmed.

Have a safe fun and happy Festive Season.

*Denise Dixey and Julie Sergeant*

The winner of Miss Fete Filly (best dressed on the day) was: Raewyn Rennie from Timaru

Best decorated Hat was a drawn card, it went to: Anne McAndrew, Hororata

Semi Permanent Arch Eyebrow Styling Voucher: Sharon Kelly, Ashburton

*Winners have been contacted.*

## METHVEN, WE'RE COMING TO VISIT

Our qualified technicians are in Methven twice a month.

Don't put up with computer problems any longer. Call us and schedule a visit today!

JAN  
8

JAN  
22

Bookings fill quickly, avoid disappointment - call today



**COMPUTERS FIXED  
FAST FIRST TIME**

- Laptop repairs
- Desktop repairs
- Email
- Data recovery
- Backup systems
- Internet

Screen repairs - using genuine Apple parts

# Computing Solutions

[www.comsol.net.nz](http://www.comsol.net.nz) | 03 308 3400



**SUNDAY 22 DECEMBER  
2-5 PM**

**FREE!**

*Chambers  
Street  
Park*



**METHVEN COMMUNITY  
CHRISTMAS Party**

FEATURING

**SANTA - BOUNCY CASTLES - BEST DRESSED  
LOLLY SCRAMBLE - SAUSAGE SIZZLE - FACE PAINTING**



For more information please contact:  
Cassandra - 0273295788 [cassandra@therregions.co.nz](mailto:cassandra@therregions.co.nz)  
Nicola - 0279365010 [nwa@eggsurprisesonawh.co.nz](mailto:nwa@eggsurprisesonawh.co.nz)



# Junior Prizegiving 2019

## Year 7 & 8

### Diligence Awards

#### Diligence Across All Subjects in Year 7

- Seb Booth
- William Davey
- Ava Henson Friend

#### Diligence Across All Subjects in Year 8

- Sienna McGinity
- Kaleb Roberts Yeo
- Sophie Thomas

*The Marr Family Award - is awarded to a student who accepts challenges and exhibits the school motto "Strive for Excellence". - Sophie Thomas*

### Merit Awards – Year 7

Matt Castil	-	Merit in Music
Riley Lowe	-	Merit in Social Studies
Jordan Magson	-	Merit in Food and Textile Technology
Lucy Markille	-	Merit in Art
Mikayla Marshall	-	Merit in Health and Physical Education
Lily McConnell	-	Merit in Social Studies
Archie McKerrow	-	Merit in Technology Hard Materials
Matthew Parker	-	Merit in Science
Lochie Paterson	-	Merit in Health and Physical Education
Finn Veix	-	Merit in Health and Physical Education
Luke Watson	-	Merit in Mathematics
Henry Arbuckle	-	Merit in Art and Food and Textile Technology
Byron Campbell	-	Merit in Health and Physical Education and Science
Liam Chalke	-	Merit in Health and Physical Education and Music
Austin Ford	-	Merit in Health and Physical Education and Technology Hard Materials
Lua Otaki	-	Merit in Mathematics and Technology Hard Materials
Georgia Gardner	-	Merit in Food and Textile Technology, Social Studies and Languages
Blake Robinson	-	Merit in Health and Physical Education, Mathematics and Music
Samantha Wooding	-	Merit in Art, Mathematics, Social Studies and Technology Hard Materials
Mungo Gormly	-	Merit in Art, English, Mathematics, Music and Science

### Merit Awards – Year 8

Mia Braidwood	-	Merit in Art
Ella Burrowes	-	Merit in Social Studies
Nikita Burton	-	Merit in Mathematics
Jack Butterick	-	Merit in Health and Physical Education
Lauren Campbell	-	Merit in Social Studies
George Fulton	-	Merit in Health and Physical Education
Rion Gaze-Inia	-	Merit in Technology Hard Materials
John Mae Gumanay	-	Merit in Art
Harpa Hughes	-	Merit in Music
Henry King	-	Merit in Health and Physical Education
Layla Manning	-	Merit in English
Milly Stockdill	-	Merit in Music
Wynter Taylor-Harding	-	Merit in Health and Physical Education
Toby Brown	-	Merit in Health and Physical Education and Technology Hard Materials
Isabella Casey-Solly	-	Merit in English and Music
Zane Harmer	-	Merit in Digital Technology and Health and Physical Education
Ian Pepito	-	Merit in Digital Technology and English for Speakers of Other Languages
Diego Sungahid	-	Merit in Digital Technology and Science
Madeleine Webb	-	Merit in English and Technology Hard Materials
Kerstin Burrows	-	Merit in Art, English and Science
Harry Judd	-	Merit in Health and Physical Education, Science, Social Studies, Technology Hard Materials and Languages
Melenaite Tuamoheloa	-	Merit in Health and Physical Education, Music, Science, Social Studies and Languages
Leah Maw	-	Merit in Art, English, Mathematics, Music, Science and Social Studies







# Junior Prizegiving 2019

## Extra Curricular Awards

Art - The Ponweiser Cup for Contribution to Art  
 Concert Band – Dedication and Commitment to Concert Band  
 Written and Spoken Communication - Diana Limbrick Family Cup for Excellence  
 Music - Most Improved Itinerant Music Student  
 Netball – Best All-Round Player – Year 7  
 Netball – Best All Round Player – Year 8  
 MHC Intermediate Visual Art Award - Excellence in Design, Execution and Commitment  
 Tennis – Rodger Harris Memorial Trophy for Junior Girls' Tennis  
 Performing Arts - Contribution  
 Hockey – Best All Round Player  
 Basketball – Best All Round Player  
 Rugby – Sportsmanship for Junior Rugby  
 Football - Best All Round Player

- Ricky Davies  
 - Nikita Cavanagh  
 - Ella Monk  
 - Leah Maw  
 - Savannah Clark  
 - Rose Dargue  
 - Shellie Ermio  
 - Shellie Ermio  
 - Isabella Casey-Solly  
 - Jack Butterick  
 - Ben Walker  
 - Bill Quigley  
 - Finn Veix

## Special Awards

### School Involvement in Year 7

- Nikita Cavanagh
- Savannah Clark
- Lucie Hood
- Noah Monson
- Ryan Richan
- Finn Veix

*The Reach for the Stars PRIDE Award for the highest achieving student in Year 7 of PRIDE Awards - Nicole Moore & Sophie Sauer*

### Citizenship in Year 7

- Hebe Gormly
- Mungo Gormly
- Freddy Judd
- Lucas Plimmer
- Sophie Sauer
- Holly Watson

### School Involvement in Year 8

- Rose Dargue
- Henry King
- Patrick McHugh
- Caden McSweeney
- Genna Oates
- Lucy Reeve

*The Reach for the Stars PRIDE Award for the highest achieving student in Year 8 of PRIDE Awards - Caleb Barr*

### Citizenship in Year 8

- Ella Burrowes
- Jack Butterick
- Jack Keane
- Ella Monk
- Wynter Taylor-Harding
- Melenaita Tuamoheloa

## Excellence Awards - Year 7

Stan Lock	- Excellence in Technology Hard Materials
Geordie Pavey	- Excellence in Health and Physical Education
Ireneep Pepito	- Excellence in Music
Tayla Whinham	- Excellence in Languages
Sky Brodie	- Excellence in Mathematics. Merit in Health and
Stan Lock	- Excellence in Technology Hard Materials
Geordie Pavey	- Excellence in Health and Physical Education
Ireneep Pepito	- Excellence in Music
Tayla Whinham	- Excellence in Languages
Sky Brodie	- Excellence in Mathematics. Merit in Health and Physical Education
Freddy Judd	- Excellence in Health and Physical Education. Merit in Science
Sarah Reeve	- Excellence in English Merit in Food and Textile Technology
Holly Watson	- Excellence in Food and Textile Technology. Merit in English
Bree Lough	- Excellence in Science Merit in Art and English
Eirene Mallari	- Excellence in Music Merit in Food and Textile Technology, Mathematics, Social Studies and Technology Hard Materials
M-Jay Sollano	- Excellence in Mathematics and Music
Nikita Cavanagh	- Excellence in English and Music. Merit in Science
Lucie Hood	- Excellence in Art and Health and Physical Education Merit in English
Noah Monson	- Excellence in Health and Physical Education and Technology Hard Materials Merit in Food and Textile Technology
Ella Irwin	- Excellence in Food and Textile Technology and Music. Merit in English and Science
Olivia McCambridge	- Excellence in Social Studies and Technology Hard Materials Merit in English and Food and Textile Technology
Lucas Plimmer	- Excellence in Mathematics and Music, Merit in Social Studies and Languages

Estella Blacktopp	- Excellence in Food and Textile Technology and Social Studies. Merit in English, Music and Science
James Ferguson-Cooke	- Excellence in Art, Food and Textile Technology and Technology Hard Materials Merit in Health and Physical Education and Social Studies
Olivia Glass	- Excellence in Music, Social Studies and Languages Merit in Art and Science
Ryan Richan	- Excellence in Mathematics, Science and Languages Merit in English and Food and Textile Technology
Lexi Hooker	- Excellence in Art, Health and Physical Education and Technology Hard Materials Merit in English, Food and Textile Technology, Music, Languages and Social Studies
Nicole Moore	- Excellence in English, Mathematics, Science and Social Studies. Merit in Music
Hebe Gormly	- Excellence in English, Food and Textile Technology, Science and Social Studies. Merit in Art, Languages, Mathematics, and Music
Gloria Masih	- Excellence in Art, English, Food and Textile Technology, Science and Social Studies Merit in Technology Hard Materials and Languages
Ricky Davies	- Excellence in Art, English, Food and Textile Technology, Music, Languages and Social Studies. Merit in Mathematics, Science and Technology Hard Materials
Jennifer Lopez	- Excellence in Art, English, Languages, Mathematics and Technology Hard Materials. Merit in Music, Science and Social Studies
Estella Lister	- Excellence in English, Food and Textile Technology, Music, Science, Social Studies and Languages. Merit in Health and Physical Education, Mathematics and Technology Hard Materials

*The Arabica Café and Bookseller Prize for General Excellence in Year 7 - Sophie Sauer*

Excellence in Art, English, Food and Textile Technology, Health and Physical Education, Mathematics, Science, Social Studies and Languages

# Junior Prizegiving 2019



## Excellence Awards - Year 8

Soni Ahotaeiloa	- Excellence in Health and Physical Education
Flynn Cudmore	- Excellence in Health and Physical Education
Tyler Maher	- Excellence in Health and Physical Education
Thomas McKenzie	- Excellence in Health and Physical Education
Damon Pulley	- Excellence in Digital Technology
Elsie Dwyer	- Excellence in English. Merit in Social Studies
Jack Keane	- Excellence in Health and Physical Education Merit in Technology Hard Materials
Caden McSweeney	- Excellence in Mathematics. Merit in Science
Benjamin Walker	- Excellence in Health and Physical Education Merit in Art
Caleb Barr	- Excellence in Science. Merit in English and Mathematics
Joshua Bellew	- Excellence in Languages. Merit in Science and Technology Hard Materials
Hugh Redfern	- Excellence in Digital Technology and Mathematics
Ruben Birt	- Excellence in Art and Health and Physical Education. Merit in Technology Hard Materials
Stevie-Lee Greagan	- Excellence in Languages and English Merit in Art and Technology Hard Materials
Joshua McKenzie	- Excellence in Digital Technology and Technology Hard Materials. Merit in Mathematics, Science and Social Studies
Jessie Lill	- Excellence in Digital Technology and Science. Merit in Art, English, Health and Physical Education, Mathematics and Social Studies
Shellie Ermio	- Excellence in Art, English and Languages Merit in Mathematics and Music
Iulia Bessai	- Excellence in English, Music and Social Studies Merit in Art, Mathematics and Languages
Rose Dargue	- Excellence in Art, Music and Technology Hard Materials Merit in English, Science and Social Studies

Jack Foster	- Excellence in Art, Mathematics, Social Studies and Technology Hard Materials Merit in Languages
Alice Miers	- Excellence in English, Mathematics, Science and Social Studies Merit in Languages and Music
Jessica Moore	- Excellence in Mathematics, Music, Languages and Science Merit in Digital Technology and Social Studies
Ella Monk	- Excellence in English, Science, Social Studies and Languages Merit in Digital Technology, Mathematics, Music and Technology Hard Materials
Steffi Furndorfler	- Excellence in Digital Technology, Mathematics, Music, Social Studies and Technology Hard Materials Merit in Science
Morgan Welsh	- Excellence in Art, English, Mathematics, Music, Science, Social Studies and Technology Hard Materials Merit in Languages

## *The Dubliner and Booksellers Prize for General Excellence in Year 8*

-	<b>Genna Oates</b> Excellence in Art, English, Mathematics, Music, Science, Social Studies and Languages. Merit in Digital Technology and Health and Physical Education
-	<b>Lucy Reeve</b> Excellence in Digital Technology, English, Mathematics, Music, Science, Social Studies and Technology Hard Materials Merit in Art and Health and Physical Education







# Junior Prizegiving 2019

## Year 9 & 10

### Diligence Awards

#### Diligence Across All Subjects

- AJ Aquino
- Sam Clark
- Harry Ford
- Grace Leahy
- Isaac Morrison
- Xavier Parris
- Jack Pulley

#### Merit Awards – Year 9

- |                  |  |
|------------------|--|
| Holly Askew      | - Merit in English   |
| William Boyd     | - Merit in Art   |
| Seth Corbett     | - Merit in Art   |
| Kate Costello    | - Merit in Art   |
| Lachlan Gardner  | - Merit in Physical Education  |
| Shylah Johnston  | - Merit in Food and Textile Technology                               |
| Floyd Lister     | - Merit in Art   |
| Alex Mackle      | - Merit in Physical Education  |
| Aisling Monson   | - Merit in Science   |
| Joshua Poland    | - Merit in Art   |
| Emlyn Rees       | - Merit in Māori   |
| Kase Thomas      | - Merit in Art   |
| Tyler Wallace    | - Merit in Physical Education  |
| Brooke Wylie     | - Merit in Food and Textile Technology                               |
| Brooke Clark     | - Merit in Food and Textile Technology and Science                   |
| Kimberley Foster | - Merit in Art and Design and Visual Communication                   |
| Hannah Hayes     | - Merit in Physical Education and Technology Hard Materials          |
| Esme Heffernan   | - Merit in Design and Visual Communication and English               |
| Jamila Jimenez   | - Merit in Music and Physical Education                              |
| Samantha Roberts | - Merit in Art and Science   |
| Mitch Veix       | - Merit in Art and Physical Education                                |
| Leah Johnson     | - Merit in English, Māori, Mathematics and Technology Hard Materials |

#### Extra Curricular Awards

- The Oram Cup for Contribution to Art - Lili Kearvell
- Basketball – Certificate for Sportsmanship - Meghan Foster
- Award for Dedication & Commitment to Choir - Jessica Bleach
- Chamber Music – Award for Dedication & Commitment to Ensemble
- Abigail Cavanagh
  - Emma Papworth
- Award for Dedication & Commitment to Concert Band -Ryan Kulsen
- Football – Most Promising Player - Maddison Foster
- Golf – The Grant Family Cup - Jack Brown
- Music – Most Improved Itinerant Music Student - Janre Lim
- McTigue Cup (Sportsmanship in Junior Netball) - Madison Holgate
- Performing Arts – Thirza Currie Trophy for Commitment to the Performing Arts - Jessica Bleach
- Rugby – Leadership and Sportsmanship Trophy
- Jack Brown
  - Ethan Jones
- Tennis – Girls' Year 9/10 Champion - Victoria Talbot
- Tennis – Boys' Year 9/10 Champion - Andrew Ermio
- Written and Spoken Communication - Le Lievre Family Cup for Excellence - Georgia Blundell
- Shooting – The McLaren Trophy -Amelia Swan
- Swimming – National Age Group Representative - Mitchell Veix
- New Zealand Honours - awarded to students who have placed 1st, 2nd or 3rd at New Zealand level:
- New Zealand Secondary Schools Duathlon Championship
- Lola Bryson- Boe - 2nd U14 Girls
- New Zealand Secondary Schools Mountain Bike Championship
- Patrick Duff -2nd Overall U16 Downhill
- New Zealand Secondary Schools Shooting Championship
- Amelia Swan - 3rd Place

*Emily Brennan Challenge Award - is awarded to a student who accepts challenges and exhibits the school motto: "Strive for Excellence":* **Sam Clark**

#### Merit Awards – Year 10

- |                      |  |
|----------------------|--|
| Jayden Etheridge     | - Merit in Technology Hard Materials                                   |
| Caitlin Muckle       | - Merit in Design and Visual Communication                             |
| Mark Pasiona         | - Merit in English for Speakers of Other Languages                     |
| Molly Rudge          | - Merit in Social Studies  |
| Tamara Bird          | - Merit in Mathematics and Social Studies                              |
| Zoe Clulee           | - Merit in Design and Visual Communication and English                 |
| Georgia Gerard       | - Merit in Agriculture and Science                                     |
| Isla Miers           | - Merit in Agriculture and Science                                     |
| Teatukura Taimataora | - Merit in Art and Social Studies                                      |
| Mabelle Davidson     | - Merit in Design and Visual Communication, English and Social Studies |

#### Special Awards

##### School Involvement in Year 9

- Andy Armour
- Lola Bryson-Boe
- Juliet Campbell
- Abigail Cavanagh
- Ranver Dalangin
- Francis Fortich
- Maddison Foster
- Mitch Veix

##### School Involvement in Year 10

- Georgia Blundell
- Zoe Clulee
- Andrew Ermio
- Colt Hill
- Molly Rudge
- Teatukura Taimataora

##### Citizenship in Year 9

- Eddie Bessai
- Juliet Campbell
- Lochlainn Hall
- Muzzammil Khan
- Gabriella Lilley
- Aisling Monson
- Emma Papworth
- Luis Varias

##### Citizenship in Year 10

- Lockie Atkinson
- Tamara Bird
- Janre Lim
- Caitlin Muckle

##### Green Family Cups - Awarded for Top Year 10 Citizenship

- **Georgia Blundell**
- **Thornton Taylor**

##### The Social Studies – "Thinking Outside of the Square"

- **George Wingfield-Clements**

##### Outstanding Contribution to Current Events

- **Tyler Wallace**

##### Jeanette Paul Award for Enthusiasm & Contribution in Technology

- **Meghan Foster**

##### Outdoor Education – Contribution and Enthusiasm

- **Thornton Taylor**

##### Duke Of Edinburgh International Award - Bronze Award

- **Amelia Swan**

*Presbyterian Support Cup - Awarded to a student who has shown excellence in assisting others through their supportive attitudes and actions.* - **Georgia Gerard**

##### The Reach for the Stars PRIDE Award – For the highest achieving student of PRIDE Awards in 2019

- |        |                           |
|--------|---------------------------|
| Year 9 | - <b>Abigail Cavanagh</b> |
|        | - <b>Charlotte Hydes</b>  |
|        | - <b>Leah Johnson</b>     |

# Junior Prizegiving 2019



## Excellence Awards - Year 9

Jack Brown	- Excellence in Physical Education
Zanthe-Lee Butterick	- Excellence in Physical Education
Patrick Duff	- Excellence in Technology Hard Materials
Ethan Jones	- Excellence in Physical Education
Muzzammil Khan	- Excellence in Art
Hunter Lill	- Excellence in Mathematics
Connor Galbraith	- Excellence in Mathematics, Merit in Art
Leo Gilpin	- Excellence in Science, Merit in Social Studies
Riley Green	- Excellence in Physical Education, Merit in Māori
Chloe Robinson	- Excellence in English, Merit in Music
Alia Forrester	- Excellence in English, Merit in Design and Visual Communication and Technology Hard Materials
Charlotte Hydes	- Excellence in Technology Hard Materials, Merit in Science and Social Studies
Caleb Jones	- Excellence in Māori, Merit in Food and Textile Technology and Science
Rebecca Rutter	- Excellence in Technology Hard Materials, Merit in English and Science
Naomi Taylor	- Excellence in Mathematics, Merit in Food and Textile Technology, Māori and Physical Education
Luis Varias	- Excellence in Art, Merit in Design and Visual Communication, Māori, Music and Science
Xyla Teriaki	- Excellence in Food and Textile Technology, Merit in Art, Māori, Mathematics and Technology Hard Materials
Eddie Bessai	- Excellence in Mathematics and Physical Education
Zari Jimenez	- Excellence in English and Food and Textile Technology, Merit in Physical Education
Anna Tuamoheloa	- Excellence in Design and Visual Communication and Food and Textile Technology, Merit in Māori
Ana Gomes	- Excellence in Art and Social Studies, Merit in Mathematics and Technology Hard Materials
Zywrone Pervera	- Excellence in Māori and Mathematics, Merit in Music and Physical Education
Arlina Smith	- Excellence in Design and Visual Communication and Technology Hard Material, Merit in English, Music and Science
Victoria Talbot	- Excellence in Music and Physical Education, Merit in English, Food and Textile Technology, Mathematics and Social Studies
Amelia Swan	- Excellence in English and Māori, Merit in Art, Food and Textile Technology, Mathematics, Science and Social Studies

Gabriella Lilley	- Excellence in Food and Textile Technology, Mathematics and Music
Andy Armour	- Excellence in Design and Visual Communication, Mathematics and Music, Merit in Māori
Christel Castil	- Excellence in Design and Visual Communication, Food and Textile Technology and Māori, Merit in Mathematics
Erica Gumanay	- Excellence in Art, Design and Visual Communication and Māori, Merit in Food and Textile Technology and Music
Lili Kearvell	- Excellence in Art, English and Music, Merit in Design and Visual Communication and Social Studies
Paige Humm	- Excellence in Food and Textile Technology, Music, Science and Social Studies, Merit in Design and Visual Communication and Physical Education
Juliet Campbell	- Excellence in Food and Textile Technology, Music, Physical Education, Science and Social Studies, Merit in Art, Māori and Technology Hard Materials
Maddison Foster	- Excellence in English, Food and Textile Technology, Māori, Physical Education and Social Studies, Merit in Music and Science
Madison Holgate	- Excellence in English, Food and Textile Technology, Māori, Physical Education and Science, Merit in Design and Visual Communication, Mathematics and Music
Morgan Lamb	- Excellence in Māori, Mathematics, Music, Science and Social Studies, Merit in Design and Visual Communication, English and Food and Textile Technology
Abigail Cavanagh	- Excellence in Design and Visual Communication, English, Food and Textile Technology, Māori and Physical Education, Merit in Mathematics, Music, Social Studies and Technology Hard Materials
Emma Papworth	- Excellence in Art, Design and Visual Communication, Food and Textile Technology, Music, Science and Technology Hard Materials, Merit in Mathematics

### ***The Dubliner and Heartland Ricoh Prize for General Excellence in Year 9 - Emily Watson***

Excellence in Design and Visual Communication, Food and Textile Technology, Māori, Mathematics, Music, Science, Social Studies and Technology Hard Materials, Merit in Art and English







# Junior Prizegiving 2019

## Excellence Awards - Year 10

Kristina Golubieva	- Excellence in Art
Daniel Jones	- Excellence in English
Ryan Kulsen	- Excellence in English
Andrew Ermio	- Excellence in Design and Visual Communication, Merit in Health and Physical Education
Emma Begg	- Excellence in Food and Textile Technology, Merit in English and Science
Gina Ensor	- Excellence in Technology Hard Materials, Merit in Agriculture and English
Reuben Brown	- Excellence in Mathematics, Merit in Health and Physical Education and Social Studies
Piper Hood	- Excellence in Agriculture and Design and Visual Communication, Merit in Food and Textile Technology
Jack McKenzie	- Excellence in Art and Social Studies, Merit in English
Colt Hill	- Excellence in Health and Physical Education and Mathematics, Merit in Business Studies and Technology Hard Materials
Shan Ancheta	- Excellence in English and Mathematics, Merit in Art, Design and Visual Communication and Science
Janre Lim	- Excellence in Design and Visual Communication and English, Merit in Digital Technology, Music and Science
Friso Warmerdam	- Excellence in Business Studies, Mathematics and Technology Hard Materials, Merit in Art and Social Studies
Jessica Bleach	- Excellence in English, Māori and Music, Merit in Business Studies, Design and Visual Communication, Mathematics and Science

Sophie Monk	- Excellence in English, Science and Social Studies, Merit in Art, Business Studies, Māori and Mathematics
Lockie Atkinson	- Excellence in Art, Health and Physical Education, Mathematics, Science and Social Studies
Meghan Foster	- Excellence in Design and Visual Communication, Digital Technology, Food and Textile Technology, Health and Physical Education and Social Studies, Merit in Business Studies and English
Thornton Taylor	- Excellence in Digital Technology, English, Science, Social Studies and Technology Hard Materials, Merit in Food and Textile Technology and Mathematics
George Wingfield-Clements	- Excellence in Art, Business Studies, English, Mathematics and Science, Merit in Design and Visual Communication, Digital Technology, Health and Physical Education
Ella McSweeney	- Excellence in Agriculture, Business Studies, Food and Textile Technology, Mathematics, Science and Social Studies, Merit in Health and Physical Education

### *The Ski Time & Heartland Ricoh Prize with the Veteran Cup for General Excellence in Year 10 - Georgia Blundell*

Excellence in Business Studies, Design and Visual Communication, English, Health and Physical Education, Maori, Mathematics, Science and Social Studies



# **HARCOURTS ASHBURTON WISH YOU AND YOUR FAMILY A VERY SAFE AND MERRY CHRISTMAS.**



Thank you for your support this year, and we look forward to assisting you in 2020 with all your buying and selling requirements!



## **JOIN OUR TEAM!**

### **METHVEN SALES CONSULTANT**

We are seeking a Residential/Small Holding Sales Consultant based in Methven to join our busy Ashburton sales team. You will have unlimited earning potential, and access to our industry leading technology and systems. Full training and ongoing professional development is provided. Your own private office, car park, and other incentives may be offered to successful candidates.

Call Tammy McDougall for a chat in complete confidence, on 0274 727 535.

# **Harcourts**

P 03 308 6497, 114 Tancred Street, Ashburton  
[www.harcourts.co.nz](http://www.harcourts.co.nz)  
Ashburton Real Estate Ltd Licensed REAA 2008



# **MTc**

## **Methven Trucking Company**



**The team at Methven Trucking would like  
to wish everyone a Merry Christmas &  
Happy New Year!**



Thank you to everyone for your support in 2019 and we look forward to 2020!

We invite all our clients to join us at our Christmas BBQ along with; R & R Spreading, Harmer Earthmoving & Humm Engineering on Friday 20th December from 4:30pm onwards at Harmer Earthmoving.

**Yard -15 Line Road | Methven | Phone 03 302 8830**



# GROW YOUR OWN

Mary Ralston

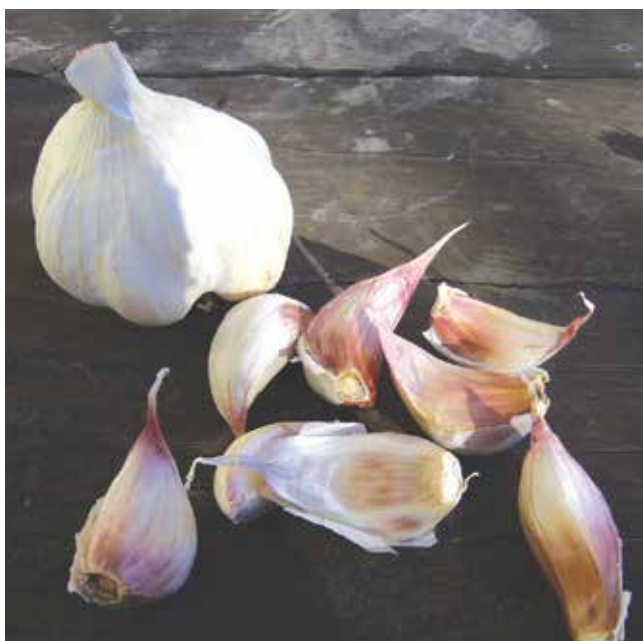
*Floods, earthquakes and volcanic eruptions... such is life in New Zealand. As I write this on Monday, you could also add drought to the list – but hopefully we will have had decent rain this week.*

It's nearly Christmas – where has the time gone! I hope you have enjoyed your gardening this year. There is great satisfaction to be had from eating our own produce and it ticks lots of boxes: fresh, healthy, local, sustainable...and has given us exercise and pleasant outdoor time in the process.

During the coming summer, keep up the watering, weeding and mulching. Remove laterals from tomatoes. Keep planting a succession of lettuces. Look out for aphids on tomatoes and peppers and squash them or spray with a solution of neem or detergent and garlic or any other non-toxic recipe. There's no need for chemical insecticides.

Fertilise your soil with compost, manure, kitchen scraps, worm wees and other natural products. Give rapidly growing plants a boost with liquid manure. Re-use or recycle your plastic pots (and grow things from seed to avoid the plastic).

Plants of all sorts, seeds, gardening tools and books make ideal Christmas gifts, and all the better if you have potted up the plants yourself.



Leeks will be the next big thing to plant; they're available in about mid-January. These are worth saving space for – I usually plant where broad beans have grown, or spots where new potatoes have left a gap. Add manure, fertiliser or compost before planting – the previous crops will have used up lots of nutrients.

We're nearly at the longest day and that means garlic may be ready around now (mine has gone mouldy and is a complete failure). The longest day also means that day-length sensitive vegetables, such as celery and silverbeet, can be planted without them bolting. Silverbeet planted early often bolts – it is nothing you have done wrong – it thinks that because it is summer it is time to go to seed.

*Thank you for reading my column this year. I wish you a Merry*

*Christmas and bountiful harvests in 2020.*



## Summer

### IDEAS & INFORMATION



SLIP




SLOP



SLAP




WRAP

**METHVEN COMMUNITY POOL** - open to the public from 1pm-6pm. 

**METHVEN LIBRARY & MUSEUM** - Main Street, Methven, open Tuesday & Saturday. 

**MT HUTT MEMORIAL HALL** - Methven Art Gallery Cash and Carry, December & January 

**NZ ALPINE & AGRICULTURE ENCOUNTER** - Mount Hutt Memorial Hall, [www.encountermethven.co.nz](http://www.encountermethven.co.nz)

**MOUNTAIN BIKE TRAILS** - Mt Hutt Bike Park plus Bike Jumps, behind the Main Street playground, Methven. BikeMethven 

**ASHBURTON ART GALLERY** - [www.ashburtonartgallery.org.nz](http://www.ashburtonartgallery.org.nz) 


**ASHBURTON LIBRARY** - Great kids area where you can sit, read and play. Havelock Street, [www.ashburtondc.govt.nz](http://www.ashburtondc.govt.nz)

**IMAGINATION STATION** - Lego paradise for kids! **Free entry**, Christchurch, [www.imagination-station.org.nz](http://www.imagination-station.org.nz)

**ARCADIA RETRO ARCADE & PINBALL EMPORIA** - Family Gaming Fun Time, daily 12pm-6pm. **Free entry** 

**MARGARET MAHEY PLAYGROUND** - **Free entry** Family Fun, Central Christchurch,

**THE GREAT MUSEUM SANTA SEARCH** - **Free entry** Canterbury Museum, Rolleston Ave, Christchurch, 9am-5.30pm until Jan 5

**BUSKERS NIGHT** - Baring Square East, Ashburton, Friday 20 December, 6.30pm. 

**HOT ROD & CLASSIC CAR SHOW** - The Blue Pub, Methven, Sunday 29 December, 10:00am

**CRUSADERS vs HURRICANES PRE-SEASON GAME** - A&P Showgrounds, Ashburton, Sat 18 Jan, 4pm - [www.ticketrocket.co.nz](http://www.ticketrocket.co.nz)

There are many walkways & lovely places to visit, such as our own Methven Walkway, Garden of Harmony, Rakaia Gorge Walkway, Awa Awa Rata Reserve, High Country Lakes and Peel Forest, all accessible by car from Methven. For further information visit Methven iSITE, [www.methvenmthutt.co.nz](http://www.methvenmthutt.co.nz) & [www.doc.govt.nz](http://www.doc.govt.nz)



## Andrew Falloon MP for Rangitata



### STEM Scholarship winner announced

**Mount Hutt College student Samantha Fitzgerald has been named as the winner of the Andrew Falloon MP STEM Scholarship.**

"Twenty-nine applications were received, and all were of very high quality, but ultimately all three judges were unanimous in the decision. As part of the process applicants were asked to write about a challenge facing New Zealand that can be overcome by using one of the STEM subjects – science, technology, engineering or mathematics. Samantha chose water quality, noting not only the scale of the problem, but also the impact on those who are being asked to resolve it.

It's really important we encourage more young people to study STEM subjects. Despite the uptick in unemployment recently there's still huge demand out there for people with technical knowledge in areas like agricultural science, so I'm thrilled that Samantha's looking at putting her scholarship towards studying Science at Lincoln.

Over the last twelve months I've been selling raffle tickets at local A&P Shows in Ashburton, Winchester, Mayfield and Methven. That fundraising effort has brought in nearly \$900, and I've contributed to increase the total value of the scholarship to \$1500.

The Andrew Falloon MP STEM scholarship is open to students who are studying or have previously studied at secondary school level in the Rangitata electorate, which includes Timaru, Ashburton, Temuka and Methven, and last year was won by former Ashburton College student Diana Barbu.

By itself my scholarship won't solve the problem of skills shortages, but I hope that it will encourage more people to look at training in the areas we need to keep our economy moving," Falloon says.

#### Samantha Fitzgerald:

Deputy Head Girl at Mount Hutt College, lives on the family farm near Methven. Commencing first year of university study in 2020, attending Lincoln University and studying towards a Bachelor of Science majoring in Conservation and Ecology. Hoping to progress to postgraduate study in

masters and/or a PhD after the completion of the bachelor's degree.

**How Science, Technology, Engineering or Mathematics can help New Zealand overcome a challenge.**

**Challenge:** Overcoming New Zealand's waterway with the lowest quality, by biological standards.

There are many challenges facing New Zealand with one of the major discussion topics being the quality of our waterways throughout Aotearoa. It appears that many urban dwellers blame the agricultural sector for this situation. Much of the information and facts appear through social media and the news, which is not always reliable, when in truth it is only the bottom 5% of waterways which have significant quality issues. This issue of our water quality has a knock-on effect to other challenges that New Zealanders face, with an important one being the mental health of people in our rural communities. This is because the blame for poor water quality seems to be directed at rural people, which is causing a lot of distress in rural communities.

Aotearoa has more than 70 major river

systems with a length of 425,000 kms. Waterways are used for recreation, irrigation, electricity generation and Maori culture of mahinga kai (food) and mauri (life force). This use of waterways is influenced by the quality of water.

The biotic systems in rural and urban waterway environments are influenced by the quality of waterways, so it's important to maintain these. Water quality, as it flows from rivers to wetlands, are a major biotic factor for living organisms survival, so it's important to overcome this challenge. This can be done through the ecological science of plants and organisms working together to create a sustainable environment.

By applying ecological principles in our aquatic ecosystems, we can monitor improvements in our water quality using natural biotic systems that are established in most aquatic ecosystems. For example, there is a biotic system that can be used as a bio monitor of water clarity. The abundant Benthic macro-invertebrates (Benthos) creatures that live on the beds of rivers,



# Happy Christmas

*Thank-you all for your support throughout 2019.  
Have a safe and happy Christmas and all the best for 2020 from all the team!*

#### Christmas Hours

Closed 25th & 26th December

Closed 1st and 2nd January

*We are open as normal between these dates  
and there's always someone here in case of  
Emergencies*

**03 302 8866**

2 Chapman St

Methven

Next To 4 Square



*Travel is the only thing you buy that makes you richer!*

**Based at Methven Travel for all your travel needs and latest deals.**

p: 303 3151  
m: 021 034 4629  
e: karen@nztravelbrokers.co.nz

First

IATA

TAANZ



stream and lakes amongst stones, logs, sediments and aquatic plants are a reliable indicator for monitoring water quality. There is a large range of species within the Benthos groups which can be studied to show a wide range of responses and sensitivity to changes in water quality. Benthos are an integral part of the food chain in the waterways and land, because fish species feed off the Benthos. This bio monitoring method is important, and it enables organisations like ECAN and DoC to identify waterways that are most in need of improvement. Monitoring these physical properties enable organisations to further test waterways at risk, when they show negative changes in the Benthos groups. Further testing will enable appropriate methods to be

used to overcome the challenge.

Aotearoa has many different waterway systems from braided rivers to aquifers. Each type of waterway system responds differently to the biotic and abiotic systems, and to different situations. An ecological solution that can be used with these different types of waterways is planting native species along banks. Planting provides a habitat for aqua species, and filters sediment and pollutants. These native plants also provide an ecological niche for native terrestrial species. Additionally, this method provides sites for Benthos species for growth and protection, which will enable the Benthos population to thrive. These aquatic species will consume algae in the waterway.

By using biological standards through ecological methods, we can improve the lower quality waterways. Using the naturally occurring biotic system we can create a positive affect and look at addressing other challenges highlighted in the water way quality discussion.

<https://www.lawa.org.nz/learn/factsheets/benthic-macroinvertebrates/>

<https://www.mfe.govt.nz/fresh-water/tools-and-guidelines/managing-ecological-health>



#### Andrew Falloon MP STEM Scholarship

- Applicants supplied a 500 word essay on the topic "How Science, Technology, Engineering or Mathematics can help New Zealand overcome a challenge" and provided a one page CV and details of intended course of study.
- Open to any student (or a person going into tertiary study in the following year) who has studied or studying at secondary school level in the Rangitata electorate (includes secondary schools in Timaru, Ashburton, Temuka and Methven).
- Applicants may study at any institution in New Zealand.
- The \$1500 scholarship can be used for any purpose and will be paid to the individual rather than the institution.
- The judges consider several criteria including the intended course of study and institution, and connection of the student to the region.
- The judges this year were Andrew Falloon (MP for Rangitata), Nigel Davenport (Chief Executive, Aoraki Development), and Bevan Rickerby (Economic Development Manager, Ashburton District Council).

*Methven*  
NEW ZEALAND

## YOU'RE INVITED TO THE REOPENING !



From smoke and flames July 2



To a fully completed upstairs renovation !

**EVERYONE WELCOME**

**Friday December 20th from 4-6pm**

Call in from 4-6pm this Friday night,  
head on upstairs and have a nosey around.  
Followed by optional refreshments in the Backyard.



## MERRY CHRISTMAS FROM ALL THE STAFF AT THE BROWN PUB!

### Opening Hours:

We are open every day  
except Xmas Day.  
We close at midnight  
on Xmas Eve and then  
reopen Boxing Day  
at 11:00am.

## MEXICAN FIESTA NEW YEAR'S EVE AT THE BROWN DECEMBER 31 AT 8PM



**NEW YEAR'S EVE AT THE BROWN  
DECEMBER 31 AT 8PM**

# Merry Christmas from Contact Physiotherapy

*Season's Greetings from all of us at Contact Physiotherapy. Thank you to our staff, clients and the wonderful community of Methven for another inspiring year of health and learning. I am grateful every day to be a part of this hard working, dynamic community and wish you all a very Merry Christmas and a Happy, Healthy 2020!*

The festive season is traditionally a time of indulgence so I thought it might be an opportunity to reflect on a few wellness behaviours that I have written about over the course of this year. We MAY employ them over Christmas or perhaps consider them for the New Year's Resolution list!

- **ACTIVITY!** Take a walk, play tennis, have a bike ride. The single most consistent health recommendation for EVERY health prevention and management is exercise. Do something- anything and endeavour to make it a habit
- Drink equal amounts of water to alcohol- at least if you are over indulging you may stay hydrated
- Sleep- it can be such a busy time with so much travel or farm work- add in

lots of parties and sleep can go by the wayside. Sleep is important for health, performance and to keep you safe in a vehicle



- Be grateful- there is increasing evidence that positive beliefs, time spent with friends and thankfulness helps back

pain, cancer, tendon and shoulder pain. The business and financial strain of the festive season can detract from what really matters. Take pleasure in the little things and don't sweat the small stuff. Your body will thank you!

One of my greatest pleasures this year was to catch up with the last five years of physio staff! These girls have brought so much pleasure to us, our clients and the little town. So festive greetings to Philene in Singapore; Isabel in Sydney, Australia; Katie and Lizzie in London, UK and Anna who is celebrating in the Falkland Islands!! Merry Christmas-love you girls!

*And a very special thanks and Happy Christmas to Amy, Jude and Tania. I am lucky to have such an amazing team.*



## 2020 Calendar

Beautiful local photography  
perfect for xmas mail

**BUY NOW !! Only \$12 at**

More Than Mail    Methven Motors  
Methven iSite      Fusion Gallery  
Bill Irwin      [www.billirwin.nz](http://www.billirwin.nz)



*Is your car ready for the holidays?*

**For all your maintenance  
services, WoF's  
and general repairs**

**To book your car in call  
03 302 9077**

**Monday - Friday  
8am to 5pm**



**Nagle Contracting**  
*Quality On Time Every Time*



- Forage Harvesting
- Baling round and square
- Mowing
- Wrapping
- Buying and selling grass, maize and straw
- Competitive prices, call to discuss

Phone: Patrick 027 297 2726

Email: [patrick.naglecontracting@gmail.com](mailto:patrick.naglecontracting@gmail.com)





## Keeping our communities safe – 1,800 new police

*Too many of us know the damage crime can do in our communities. Beyond the victim's suffering, whole neighbourhoods can be shaken by burglaries or assaults, let alone more serious crimes.*

Before the last election, crime had picked up and our prison population had exploded. Labour echoed calls from communities across the country to first and foremost prevent crime, to minimise the harm associated with

any crime, and to keep our communities safe.

That's why we campaigned on increasing the number of Police officers, after seeing the previous government neglect the force for much of its time in office. And that's why we committed to adding 1,800 new Police officers when we took over.

Today I'm pleased to say we're making tremendous progress. Since we became Government, 1825 new officers have hit our streets. Of these 171 have come to the Canterbury region.

We're also working with the Police to get their attrition rate down, so good officers stay in the force longer. We are also working hard to ensure that the Police workforce more closely reflects the community they serve, with a 29% increase in Constables who are women joining the organisation.

But keeping our communities safe is about more than just putting feet on the ground.

That's why we've also given the Police greater search and seizure powers to target the manufacturers and suppliers of synthetic drugs, to get these drugs off our streets.

And we've installed over 500 fog cannons in dairies, liquor stores and petrol stations across the country, to support our small businesspeople who were left to go it alone, and to reduce the risk of aggravated robberies at large.

This government takes community safety seriously and we're making the investments needed to intervene early before people break the law, or commit more serious crimes.

*I am proud to be part of a government that's working hard to keep our communities safe. And while the Government plays an important role, I think we can all do little things each day with the same goal in mind.*

**Please feel free to contact me:**

**jo.luxton@parliament.govt.nz**

**or my EA Jess:**

**jessica.hurst@parliament.govt.nz**

## STOP BIRDS

leaves, snow and hail  
from blocking up your spouting

Gumleaf Gutter Guard has been proven on thousands of homes across Australia and New Zealand over the last 12 years.

Quality materials: BHP Colourbond steel mesh with unique patented louver which will even keep out pine needles. Will not rust or sag with age or load.

Colour matched to your existing roof colour and a 10 year warranty for total peace of mind

Call Rohan Rudd for a no-obligation assessment and quote anytime, any day except Sunday.

GumLeaf

0800 486 532  
or 03 982 8850  
www.gumleaf.co.nz

## Rubbish & Recycling Holiday collections

### RESOURCE RECOVERY PARKS

The Ashburton and Rakaia Resource recovery Parks will be closed on **Wednesday 25 December 2019** and **Wednesday 1 January, 2020**. The Ashburton Resource Recovery Park will also be closed **Thursday 26 December, 2019**.

### RUBBISH AND RECYCLING - KERBSIDE COLLECTION

M	T	W	T	F	S	S
23	24	25	26	27	28	29

M	T	W	T	F	S	S
30	31	1	2	3	4	5

Residents who receive kerbside collection on or after December 25 & January 1 will have their bins and/or crate collected **the day after their usual collection day** that week. Monday and Tuesday collections will be unaffected.

- Wednesday collections will be picked up Thursday
- Thursday collections will be picked up Friday
- Friday collections will be picked up Saturday

Please ensure all rubbish and recycling is placed at the kerbside by 7.30am on collection day.

Neil McCann  
Group Manager Service Delivery



ashburtondc.govt.nz

## STONEMASON AVAILABLE

For small projects in Methven area

- Garden features/surrounds
- Pointing/Maintenance
- Can work with variety of stone

For all inquiries, contact Ethan on;  
**022 458 0031 or at ethan.MHSC@gmail.com**

# METHVEN BOWLING CLUB

**Bowls Report for week ending 15 December 2019**

*The Men's Championship games continue and soon we will get to semi finals stage which I shall report on next time.*

The guys have been working hard to get their competitions completed in time for regional Champion of Champion finals. Some of the games have been very exciting to watch in the clubhouse tucked away from the wind!

Saturday found us hosting the Four Square Stuart Gordon Christmas tournament at the club. Normally this would be a big event catered for by the ladies in the club, but Gary Eddington and his staff took over this time and cooked a fantastic meal for a full field of 64 players.

**Winners:** Bob Holdom, Bruce White, Sandra Holdom, Noeline Woods

**Second Place:** Bruce Mayson, Bruce Harper, Bruce Redmond, Millie Fargo

**Third Place:** Sandra Keith, Craig Carter, Richard Kane, Craig Harrison

**Fourth Place:** Tom Tamiti from Canterbury Bowling Club Christchurch

The day was a resounding success and one for which I imagine we will be fighting for places next year. Having the largest boom box I have ever seen providing brilliant music all day was a real bonus too.

The ladies Interclub Fives competition is now finished with Methven and Burnside 1 coming first equal in the placings table. This was a great effort by the team of Shirley Pagey, Wendy Carter, Pat McElwain, Lyn Fensom and Di Callaghan with Raiona Isherwood stepping in on one occasion. It entailed a lot of travelling in to Christchurch greens, but it was well worth the effort. This probably means we get put up into Division 1 next season.

The Business House bowling evenings were a huge success, and we hope to pick that up again in the new year as so many locals really enjoyed their evenings at the club.

*So it remains for me to wish you all a wonderful Christmas and New Year.*



THE **CHRISTMAS** HOLIDAYS ARE NEAR,  
PERFECT TIME TO GET YOUR **VEHICLE** IN TO  
**METHVEN MOTORS**  
BEFORE YOU TAKE ON THAT LONG DRIVE

THE WORKSHOP AND TYRE & LUBE BAY'S CHRISTMAS HOURS ARE

MONDAY 23 <sup>RD</sup> DECEMBER	OPEN
TUESDAY 24 <sup>TH</sup> DECEMBER	OPEN
WEDNESDAY 25 <sup>TH</sup> DECEMBER	CLOSED
THURSDAY 26 <sup>TH</sup> DECEMBER	CLOSED
FRIDAY 27 <sup>TH</sup> DECEMBER	CLOSED
MONDAY 30 <sup>TH</sup> DECEMBER	OPEN
TUESDAY 31 <sup>ST</sup> DECEMBER	OPEN
WEDNESDAY 1 <sup>ST</sup> JANUARY	CLOSED
THURSDAY 2 <sup>ND</sup> JANUARY	CLOSED
FRIDAY 3 <sup>RD</sup> JANUARY	CLOSED

RETURNING TO NORMAL HOURS AGAIN AS OF MONDAY 6<sup>TH</sup> JANUARY

CALL ONE OF OUR FRIENDLY TEAM TODAY ON 03 302 8201



## PRECISION SPRAYING UP TO 32M



### HOUSEHAM MERLIN M4 32

- ✔ Ag Leader GPS
- ✔ AutoSteer
- ✔ 24m & 32m recirculating boom
- ✔ Air ride suspension
- ✔ Auto section control to minimise chemical wastage and double spraying
- ✔ Flotation and row crop tyres
- ✔ Adjustable hydraulic axles to match any tramline width

### ISUZU SPRAY TRUCK

- ✔ 4wd
- ✔ Removable dual wheels for soft conditions
- ✔ ARAG GPS
- ✔ 24m recirculating boom
- ✔ Automatic section control

### LIQUID UREA SUPPLIER

Think Hampton Spraying for all your spraying needs, phone James Hampton on 027 345 6077.

A/H: 03 302 1848  
Fax: 03 302 1848  
Email: hamptonspraying@gmail.com  
1741 Back Track RD14 Rakaia

**Hampton**  
Spraying





Jo and Ian with his Fargo Truck, in front of the Methven Care Trust house fundraiser.

# Recycling raises funds for Aged Care Home

**Gerard McCloy**

Recently the Methven Vintage Machinery Club gave another \$2,500 to the Methven Care Trust to add to the \$2,000 we gave them in February bringing the total to \$4,500 this year.

Most of this money was raised from our Metal Recycling Depot on Methven Chertsey Rd, opposite the Methven Police Station.

We currently have 41 members and have our Club Shed at the Methven A&P Grounds. Most members have vintage tractors, farm machinery, and some have old trucks and cars too, including Ian Hydes who is pictured (above left) with Jo Suyker, Methven Care Trust Chairperson.

Ian is our Metal Recycling yard supervisor and has many meticulously restored McCormick tractors, some 1950's cars and 2 trucks.



## SNAPSHOTS OF TIMES PAST

with the Methven Historical Society

Methven Museum open 2-4 Tuesday & Friday



Unveiling of Methven District School Roll of Honour 1921

Methven District School - Roll of Honour

It is hoped that this photo may trigger someone's memory. This memorial board is missing and it is hoped someone may have it tucked away in their garage or shed roof. If you have it or have seen it please contact someone in the Methven Museum.

## SPRING LYNNE MOTORCYCLES

**Service and repairs of all makes and models of motorcycle, ATV and Side by Sides.**

**Sales of used farm motorcycles, ATVs and Side by Sides.**

Ph 03 302 4939

1830 Methven Highway, RD6, Ashburton

Open Monday to Friday 8am -5pm



[www.springlynnemotorcycles.co.nz](http://www.springlynnemotorcycles.co.nz)

## Country by Design

We will close Friday 20 December.

We wish all our lovely customers a Merry Christmas and a safe and happy New Year.

**We re-open Tuesday 4 February (1-5pm).**

140 Forest Drive  
ph: 302 8062

# CLASSIFIEDS

**CHIMNEY** Sweep available also firebox and flue repairs. 027 404 4226 or 302 9413

**FIREWOOD** & Treework. Delivering dry firewood for this winter. Tree removal service by experienced team. Call Rini on 027 451 7300

**FOR** a wealth of Freemason information and local history  
www.methvenlodge51.org

**JUNKO** Acupuncture ACC treatment provider. For booking and enquiries, phone 302 8888

**LOG** Splitter for hire. Dixon Machinery & Dieseltech, phone 302 8946

**BATTERY** Problems? Come talk to your friendly Auto Electricians at Methven Motors for a FREE Battery test. Tel 302 8201 ext 2

**AQUA** Japanese restaurant for sale. See Yuki for details on 021 065 7547

**CHILDCARE** available. Home-Based. Qualified Rudolf Steiner teacher. Personalised Early Learning for 3-6 yr olds. 20 hours ECE free. Contact Lisa 021 0250 5800

**PILATES** & Barre Bookings open 2020 beginning 3rd February BOOK now via MINDBODY or email Anna: studio@annafit.co.nz:

**METHVEN** Sports Massage Clinic, view/book online. Ph 027 681 3201. Open 7 days

**PILATES** & Barre summer classes running Mondays 13th, 20th, 27th January. Barre 5:15 pm & Pilates mixed level 6:15 pm (if full, possibility of 7:15pm Pilates Class) book via MINDBODY App or email Anna studio@annafit.co.nz:

**VILLAGE TAKEAWAYS AND PIZZAS** HOLIDAY HOURS. We are open only Friday, Saturday and Sunday both Christmas week and New Year week. OTHERWISE open from 5pm Wed to Sun Phone 03 302 8192, Find us on Facebook or at Villagetakeaways.co.nz

**THAI** Chilli Open 7 days, 5pm to 9pm. Buffet takeaway - \$12 small, \$15 large. Dine in buffet \$28 Adult, children under 12 charged by age. Ph: 303 3038

## Delivery person needed

One Snowfed route available from 15 January 2020.



Please email:  
letterbox@snowfed.co.nz

## Truck Driver

Truck driver wanted for Silage Season



Please ring  
021 894 413 or  
027 498 2069



# SNOWFED CHRISTMAS

The Snowfed Office  
will close  
17th December 2019 and reopen  
on  
13th January 2020

Deadline for advertising  
bookings is Noon  
Friday 10th January

A huge thank you to all our  
advertisers, contributors and  
readers for your continued  
support throughout the year!



*from KT's Contracting*

The team at KT's will be taking a well earned break.

**Our last day is Friday 20 December. Returning  
Monday 6 January.**

*Thank you all so much for your support throughout  
the year.*

*We could not have done it without you!*



# THE BLUE PUB

**A VERY MERRY CHRISTMAS  
TO ALL OUR  
WONDERFUL CUSTOMERS!**

**SATURDAY DEC 21**

Smoke & Mirrors Band from 9:30pm

**SATURDAY DEC 28**

Hot Rods @ The Blue

DJ Powerhouse from 9:30pm

**TUESDAY DEC 31**

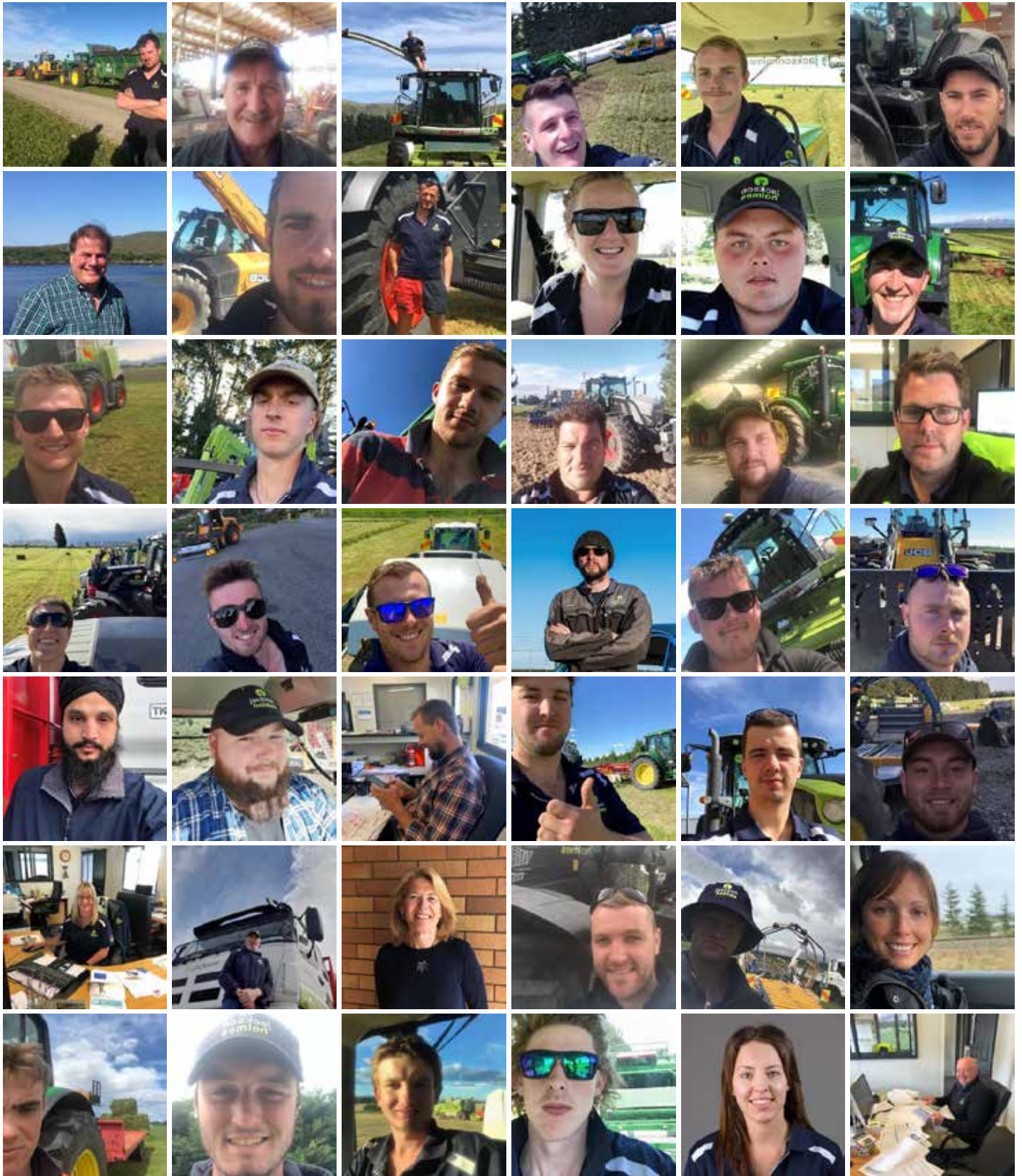
New Years Eve

DJ Powerhouse from 9:30pm

## OPENING HOURS

We are open every day except Xmas Day.  
We close at midnight on Xmas Eve and then  
reopen Boxing Day at 11:00am.





*MERRY CHRISTMAS* from the team at

 **jacksonholmes**  
contracting & supplementary feed





RayWhite

Merry Christmas

Margaret, Shirley & Robyn wish everyone a Very Merry Christmas and a Safe and Happy New Year. Office closed from 12:00pm Fri 20 Dec to Mon 06 Jan 2020.

Margaret & Shirley Are Available For Your Real Estate Needs During This Holiday Time.



RayWhite

New Listing

94 Spaxton Street, Methven

4 2 2 2

Attractive 7 year old, 4 bedroom home, tastefully landscaped & securely fenced. Modern kitchen with granite benches. Dining space with timber plank flooring. Heated by log burner & heat pump. Master opens out to decking / ensuite/WIR. Spa & wall mounted TV.

For Sale  
\$660,000

View  
by appointment



Margaret Feiss  
021 751 009

[rwashburton.co.nz/AHB22643](http://rwashburton.co.nz/AHB22643)

Mid Canterbury Real Estate Limited Licensed (REAA 2008)



RayWhite

New Listing

8 Camrose Avenue, Methven

3 2 2 2

Opportunity is knocking with this 2 year old cleverly designed home. Modern kitchen that leads out to very sheltered Alfresco area (covered outdoor space). 3 sunny bedrooms, 2 luxurious bathrooms (master ensuite). Ideal for 1st home buyers retirees home, holiday home.

For Sale  
\$585,000

View  
by appointment



Margaret Feiss  
021 751 009

[rwashburton.co.nz/AHB22644](http://rwashburton.co.nz/AHB22644)

Mid Canterbury Real Estate Limited Licensed (REAA 2008)



RayWhite

48 South Belt, Methven

3 2 2 2

Modern edge home. 3 bedrooms plus office/4th bedroom in a private well fenced section. On trend kitchen. Open plan living heated by a log burner with doors opening out to large north facing decking. 2 modern bathrooms. Master views to Mt Hutt. Double garage.

For Sale  
\$499,000

View  
by appointment



Margaret Feiss  
021 751 009

[rwashburton.co.nz/AHB22632](http://rwashburton.co.nz/AHB22632)

Mid Canterbury Real Estate Limited Licensed (REAA 2008)



RayWhite

19 Chapman Street, Methven

4 2 2 2

- Family size 1012m2 section
- Modern four bedroom home
- New kitchen that flows to living area + separate family lounge
- 2 bathrooms, master ensuite & WIR

For Sale  
by negotiation

View  
by appointment

Margaret Feiss  
021 751 009

[rwashburton.co.nz/AHB22382](http://rwashburton.co.nz/AHB22382)

Mid Canterbury Real Estate Limited Licensed (REAA 2008)



RayWhite

80 Mt Hutt Station Road, Methven

8 Ha freehold block of bare land just outside of town boundary. 500 metres from proposed Hot Pools. Fully fenced with 3 entrance ways & stock water 2 sides. In place at boundary town water supply, power & phone line

For Sale  
\$849,000 + GST (if any)  
REDUCED

View  
by appointment

Shirley Fitzgerald  
0272 201 528

[rwashburton.co.nz/AHB22424](http://rwashburton.co.nz/AHB22424)

Mid Canterbury Real Estate Limited Licensed (REAA 2008)



RayWhite

20 Dolma Street, Methven

- 4226m2 section with title
- This is where town meets country
- Fully fenced
- Close to schools & walking distance to town centre

For Sale  
\$350,000

View  
by appointment

Shirley Fitzgerald  
0272 201 528

[rwashburton.co.nz/AHB22450](http://rwashburton.co.nz/AHB22450)

Mid Canterbury Real Estate Limited Licensed (REAA 2008)



RayWhite

0 Barkers Road, Methven

- Camrose Estates
- Stage 1 - lot 8
- Stage 2 - SOLD
- Stage 3 - now selling (titles available)

For Sale  
Price On Application

View  
by appointment

Margaret Feiss  
021 751 009  
Shirley Fitzgerald  
0272 201 528

[rwashburton.co.nz/AHB22363](http://rwashburton.co.nz/AHB22363)

Mid Canterbury Real Estate Limited Licensed (REAA 2008)



RayWhite

Lots 2, 3 & 4 149 Forest Drive, Methven

- Three 4000m2 plus sections
- Located down a private driveway
- Town water, power, fibre & fully fenced
- These sections combine pristine views, privacy & tranquility

For Sale  
'Ranelagh'  
3 Boutique Lifestyle Sections

View  
by appointment only

Margaret Feiss  
021 751 009

[rwashburton.co.nz/AHB22536](http://rwashburton.co.nz/AHB22536)

Mid Canterbury Real Estate Limited Licensed (REAA 2008)



RayWhite

Thymestream, Mt Harding Road, Methven

- 1st release SOLD
- 2nd release lot 5
- 3rd release lots 10 & 11

For Sale  
Price On Application

View  
by appointment

Margaret Feiss  
021 751 009

[rwashburton.co.nz/AHB22028](http://rwashburton.co.nz/AHB22028)

Mid Canterbury Real Estate Limited Licensed (REAA 2008)



Principal: Jill Quaid  
0274 376 755



Margaret Feiss  
021 751 009



Shirley Fitzgerald  
0272 201 528



Robyn Lilley  
03 303 3032

36 McMillan Street, Methven 03 303 3032

[rwashburton.co.nz](http://rwashburton.co.nz)